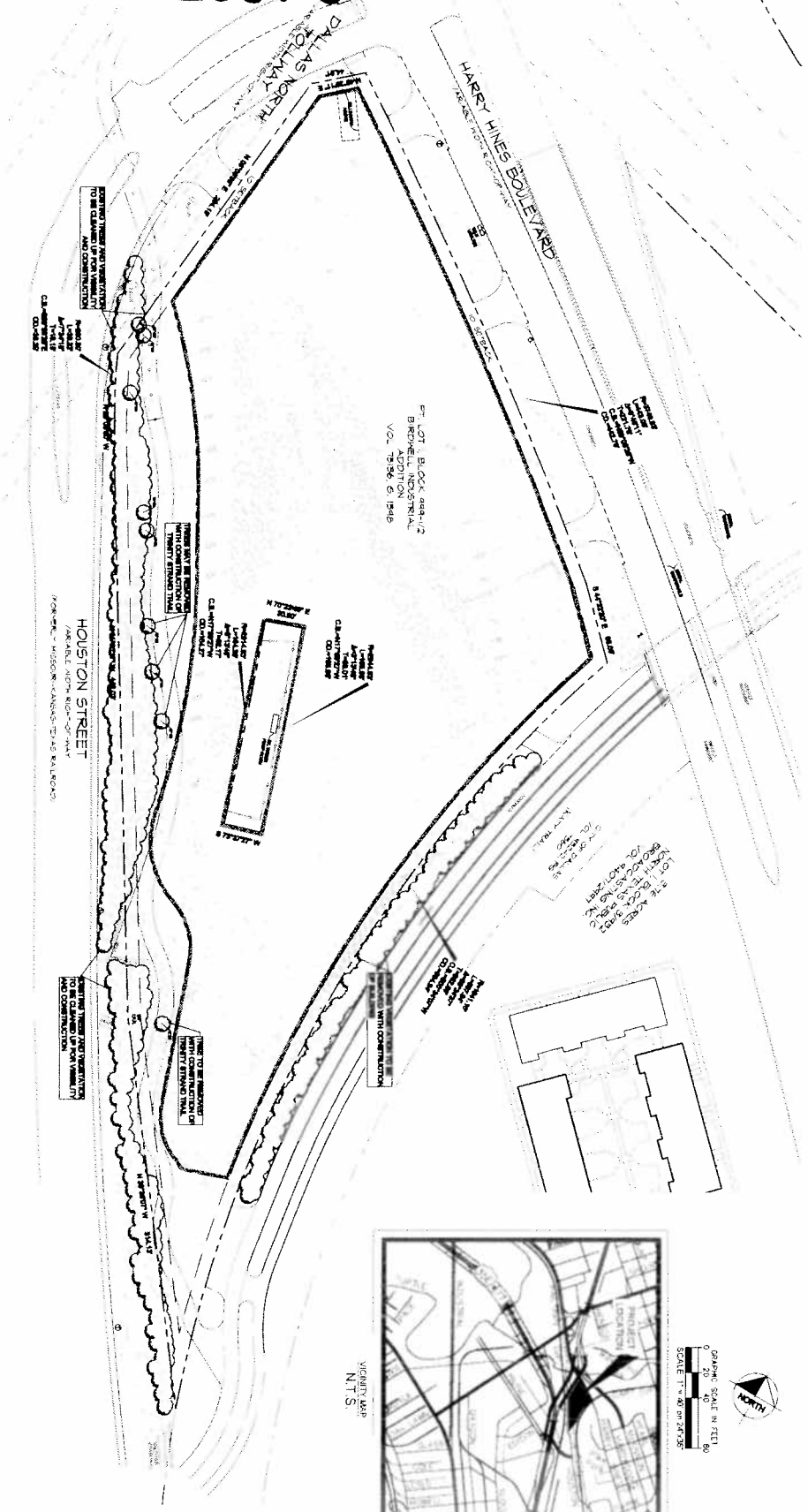


28878

Client: Together with the concepts and design presented herein, an implementation of services is intended only for the specific project and shall be subject to the written authorization and adaptation by Kimley-Horn and Associates, Inc. and its without liability to Kimley-Horn and Associates, Inc.



ABBREVIATION	TREE INVENTORY	TREE NAME
CB	CINNABERRY	
CE	GEORGE ELM	
CW	COTTONWOOD	
GA	GREENYASH	
HB	HUCKLEBERRY	

NOTE:
COORDINATION WITH BUILDING OFFICIAL IS REQUIRED FOR REMOVAL OF EXISTING TREES AND VEGETATION.



**HOUSTON STREET TREE PLAN
PDS XXX PD NO. 193-1-2**

ALEXAN SKYLINE
LOT 1, BLOCK 998-1/2
BIRDWELL INDUSTRIAL ADDITION
CITY OF DALLAS DALLAS COUNTY TEXAS
PREPARED NOVEMBER 16 2012



Z112-276 (RB)

Planned Development
Subdistrict No. 96

Planned Development
District No. 193

Approved
City Plan Commission
November 15, 2012

DALLAS TEXAS	ALEXAN SKYLINE PREPARED FOR TRAMMEL CROW RESIDENTIAL	HOUSTON STREET TREE PLAN	FINAL PROJECT 08414567.3	Kimley-Horn and Associates, Inc. 12740 WEST SPRING STREET, SUITE 1000, DALLAS, TX 75251 PHONE: 972-750-1300 FAX: 972-236-8826 WWW.KIMLEY-HORN.COM TX 7-028	No	REVISIONS	DATE	BY
			DATE 11/16/12					