

29033

01.08.2013 2012085
Copyright © JHP 2012
Preparatory Approval, Plans for Construction, Mike Ashour
Registered Architect, State of TX, Registration No. 11559



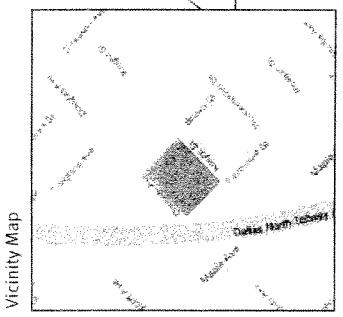
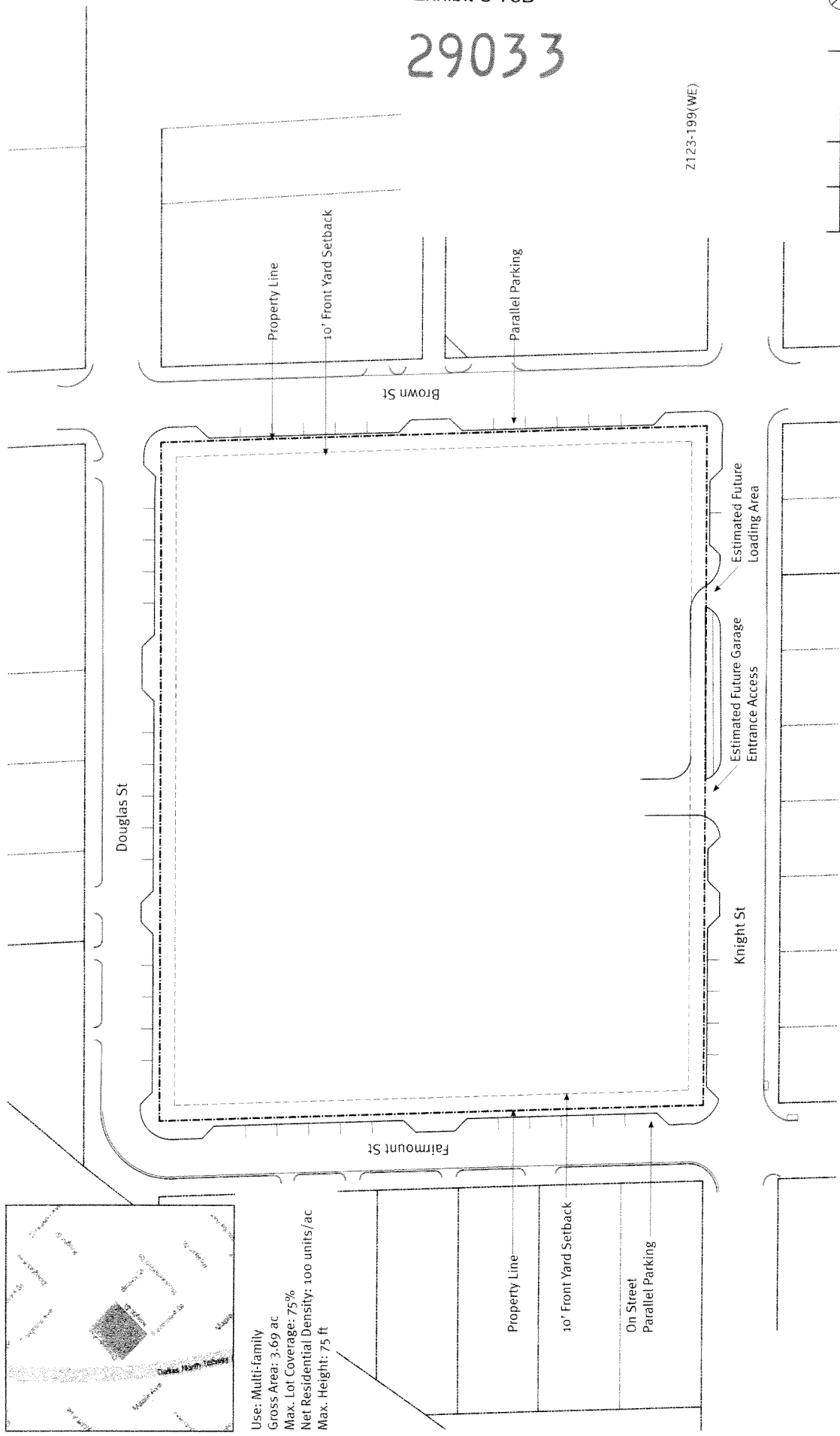
Planned Development
Subdistrict No. 78

Planned Development
District No. 193

Conceptual Plan
Scale 1" = 60' - 0"

Trammell Crow Residential

Fairmount at Douglas
Dallas, Texas



Use: Multi-family
Gross Area: 3.69 ac
Max. Lot Coverage: 75%
Net Residential Density: 100 units/ac
Max. Height: 75 ft

Approved
City Plan Commission
May 2, 2013