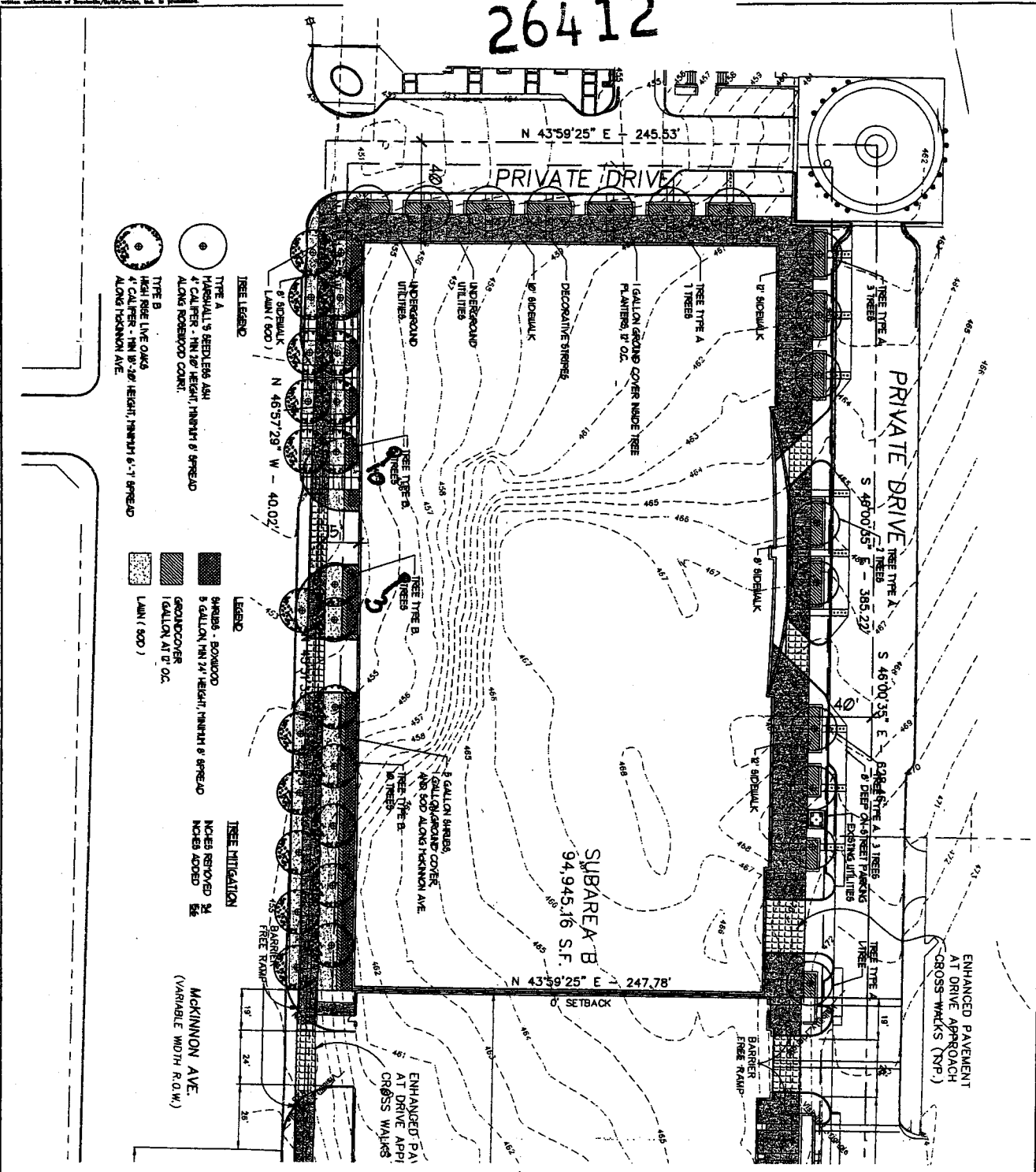


26412

Copyright 2006 Brockette-Davis-Drake, Inc. All Rights Reserved. This drawing is the property of Brockette-Davis-Drake, Inc. and is not to be reproduced, stored in a retrieval system, or transmitted in any form or by any means, electronic, mechanical, photocopying, recording, or by any information storage and retrieval system, without the prior written permission of Brockette-Davis-Drake, Inc.



**TREE LEGEND**

TREE A  
HORSESHALL'S SEEDLESS ASH  
4" CALIPER - 11N1/2" HEIGHT, 11N1/2" SPREAD  
ALONG ROSEWOOD COURT.

TREE B  
HIGH RISE LIVE OAKS  
4" CALIPER - 11N1/2" HEIGHT, 11N1/2" SPREAD  
ALONG MCKINNON AVE.

**LEGEND**

SHRUBS - BOXWOOD  
5 GALLON, 11N1/2" HEIGHT, 11N1/2" SPREAD

GROUND COVER  
1 GALLON, AT 1/2" O.C.

LAWN (500')

**TREE MITIGATION**

TREES REMOVED 24  
TREES ADDED 55

MCKINNON AVE.  
(VARIABLE WIDTH R.O.W.)

*[Signature]*

Approved  
City Plan Commission  
June 22, 2006

Planned Development  
District No. 193

PDS No. 74

PDS LANDSCAPE PLAN- SUBAREA B  
ROSEWOOD COURT DEVELOPMENT  
DALLAS, TEXAS

**BROCKETTE-DAVIS-DRAKE, INC.**  
Landscape Architecture  
4444 North Central Expressway, Suite 1000 • Dallas, Texas 75246  
972.353.8200 • Fax 972.353.8200

DESIGNED	DATE	SCALE	NOISE	FILE	INC.
08/08	8/1/08	1"=30'	800	025281	L53