

LANDSCAPE PLAN
McKinney and Hester
Dallas, Texas



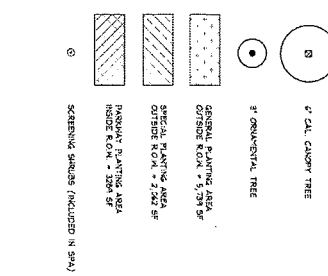
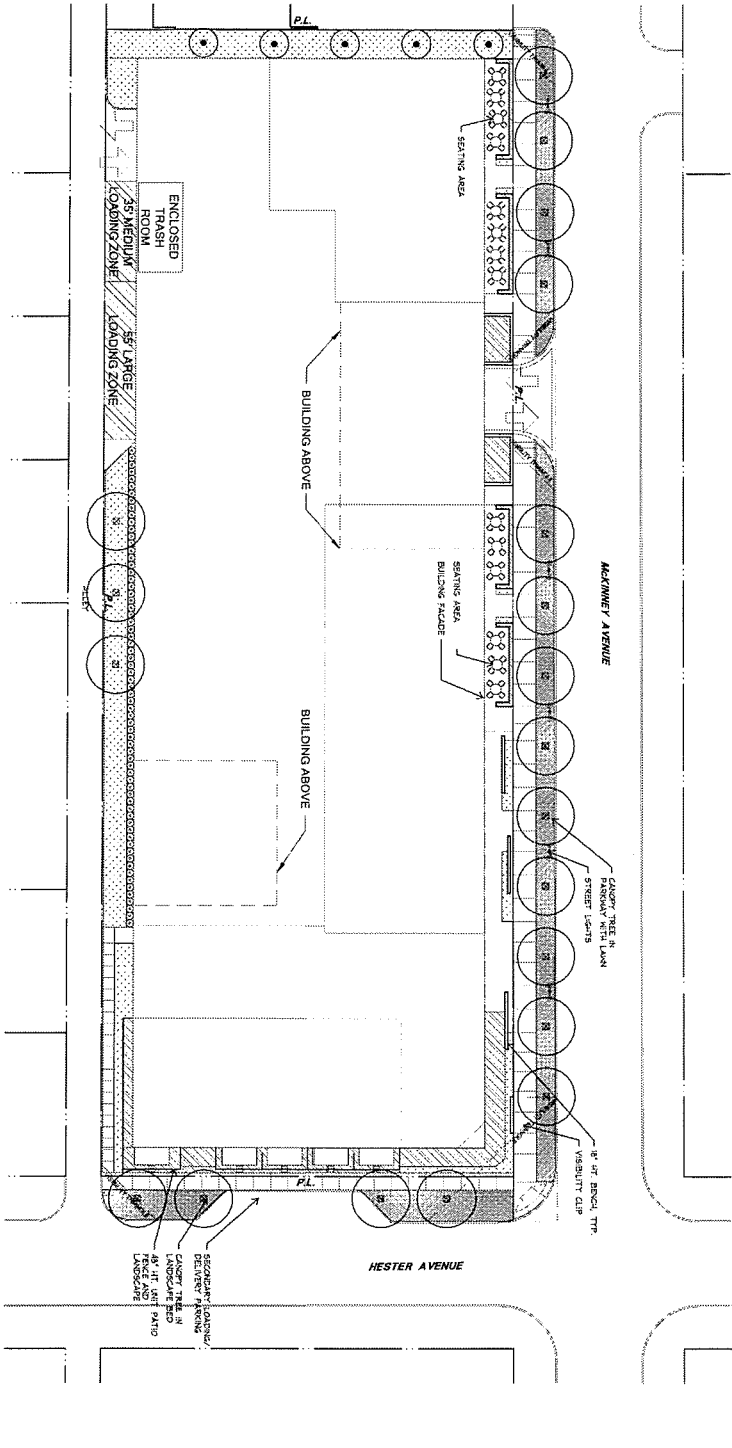
Job #: 13249
File Name: D13891-SF-1.dwg
Date: 04.15.2014
Drawn by: DW, JH, CC



0 20 40 80 Feet
SCALE: 1" = 20'-0"



Good Fulton & Farrell Architects
2808 Fairmount Street
Suite 300
Dallas, Texas 75201
214.303.1500/Tel
214.303.1512/Fax
www.gfi.com



LANDSCAPE TABULATIONS (1) 1/3 ACRE RELEASE TRACT

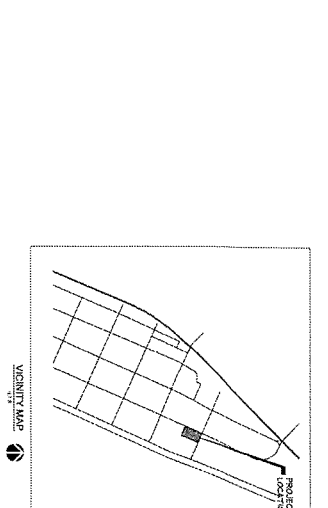
PLANTING SPECIFICATIONS	SCREENED	UNSCREENED
GENERAL PLANTING AREA, 50% OF LANDSCAPE SITE AREA	9,500 SF (43)	4,750 SF (43)
GENERAL PLANTING AREA, 10% OF GENERAL PLANTING AREA	2,284 SF (73)	5,734 SF (44)
GENERAL PLANTING AREA, 10% OF GENERAL PLANTING AREA	193 SF (65)	2,042 SF (73)
SCREENING SHRUBS (VIBR. CLIP DISTANCE SUBTRACTED FROM 1/3)		
STREET FRONTAGE, 45 LF		(1) TREES, 5" CAL.
STREET FRONTAGE, 45 LF		(2) TREES, 10" CAL.
STREET FRONTAGE, 45 LF		(3) TREES, 10" CAL.
STREET FRONTAGE, 45 LF		(4) TREES, 5" CAL.

SCREENING SHRUBS (INCLUDED IN 50%)
FINISH TREE MITIGATION TO FOLLOW CITY OF DALLAS ARTICLE 7 REQUIREMENTS

SCREENING SHRUBS (INCLUDED IN 50%)
FINISH TREE MITIGATION TO FOLLOW CITY OF DALLAS ARTICLE 7 REQUIREMENTS

SCREENING SHRUBS (INCLUDED IN 50%)
FINISH TREE MITIGATION TO FOLLOW CITY OF DALLAS ARTICLE 7 REQUIREMENTS

SCREENING SHRUBS (INCLUDED IN 50%)
FINISH TREE MITIGATION TO FOLLOW CITY OF DALLAS ARTICLE 7 REQUIREMENTS



Landscape Plan
Exhibit S-71B
PDD 193, Subdistrict No. 71