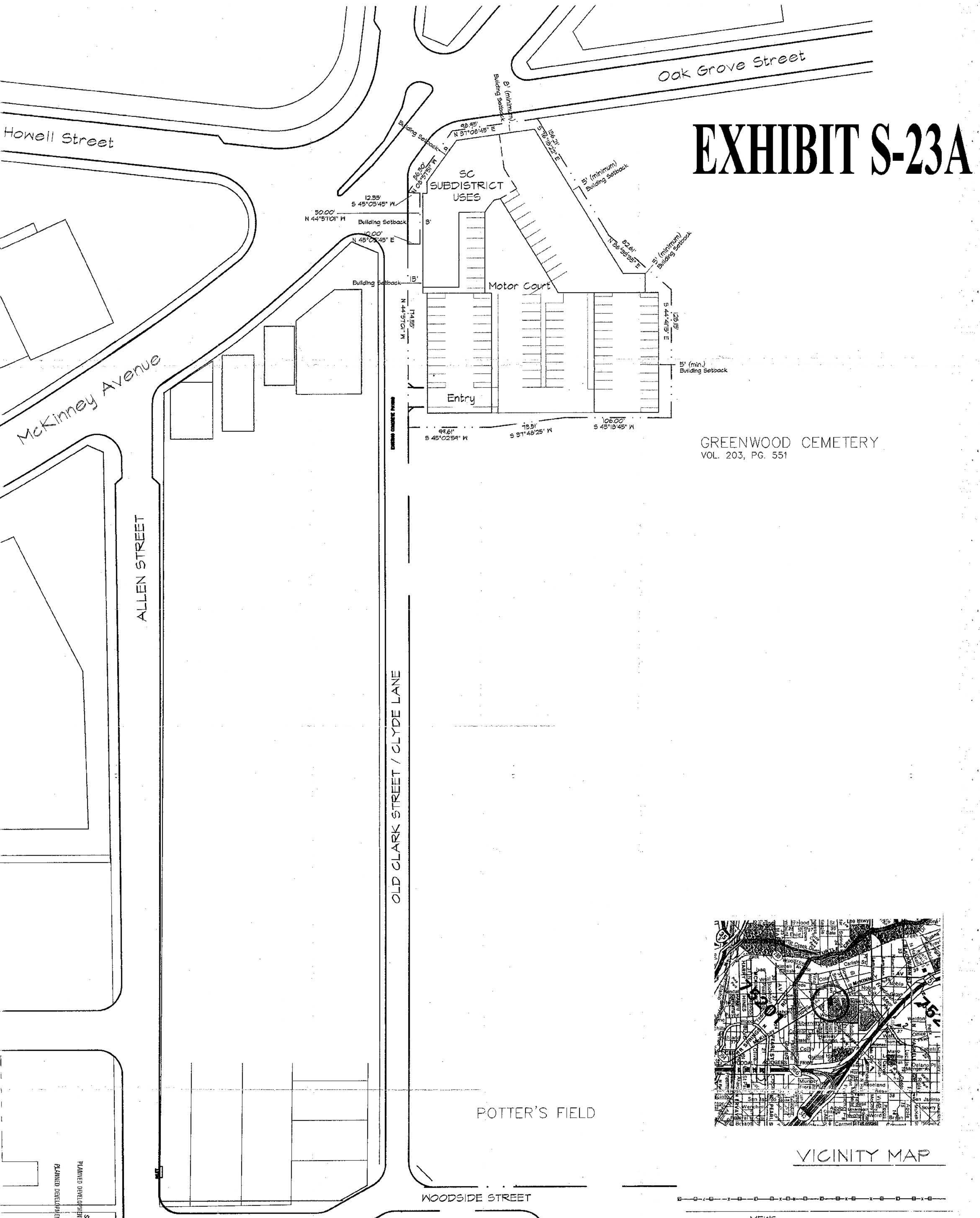
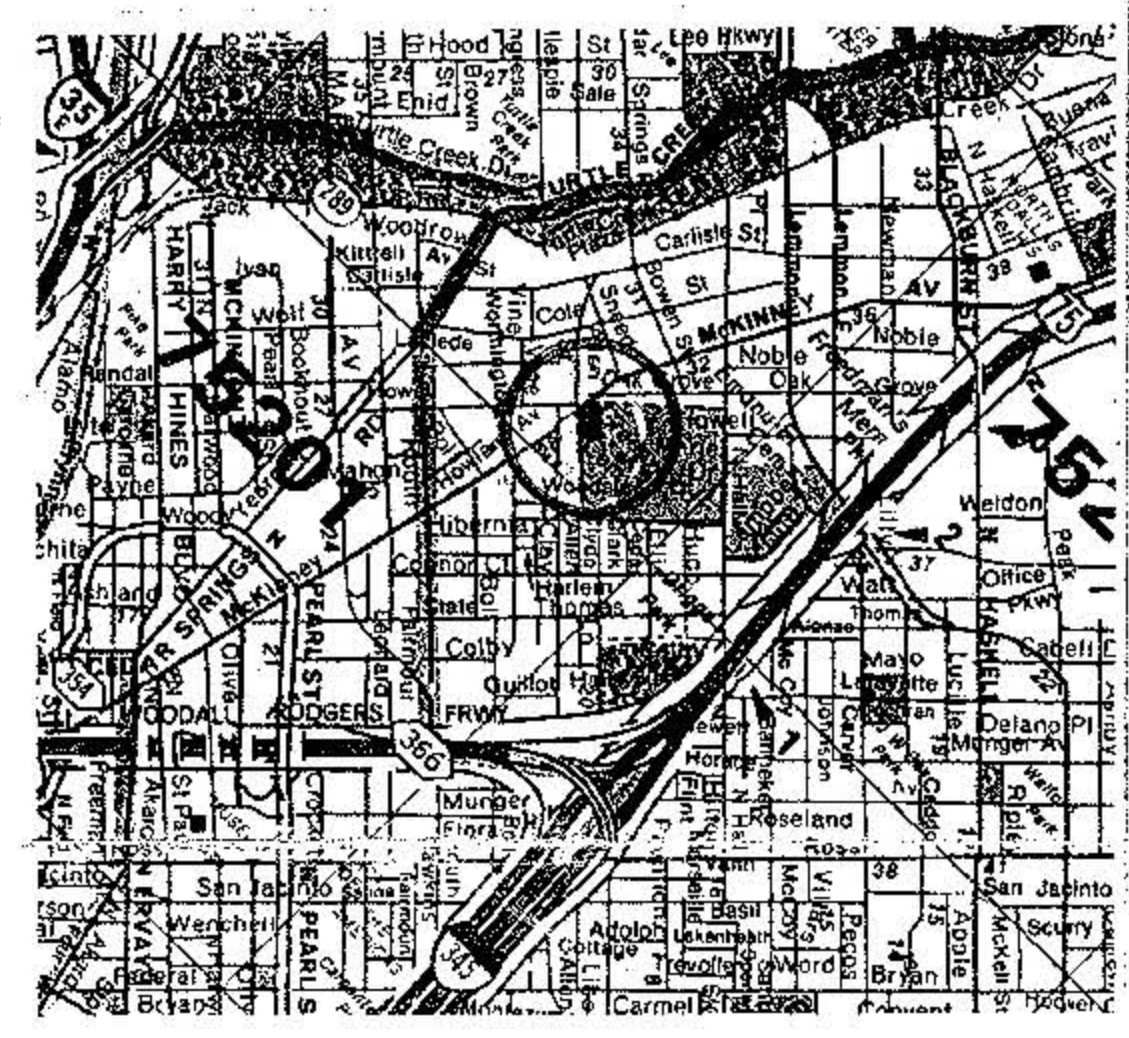


EXHIBIT S-23A



GREENWOOD CEMETERY
VOL. 203, PG. 551



VICINITY MAP

APPROVED BY
CITY COUNCIL

FEB 28 1998

23453

980732

PLANNED DEVELOPMENT DISTRICT NO. 23

PLANNED DEVELOPMENT DISTRICT NO. 193

2407-123/10239-C(125)

RTKL

2628 Routh Street, Suite 200
Dallas, Texas 75201
(214) 871-8877

DEVELOPMENT PLAN

Scale: 1" = 2' 40"

Date: 9/13/97

Last Rev:

Revisions:

No. Date Description

Checked: **PRELIMINARY**

Approved: **NOT FOR CONSTRUCTION**

CLYDE LANE (OLD CLARK ST.) HOUSING

URBAN HOUSING

Dallas, Texas

Owner / Developer:
POST PROPERTIES, INC.
John Allurus (644) 387-1492
15851 N. Dallas Parkway ste 855
Dallas, TX 75248

Architect/Planners:
RTKL ASSOCIATES, INC.
2628 Routh Street
Suite 200
Dallas, TX 75201

Landscape Architects:
HUITZ ZOLLARS, INC.
3131 MCKINNEY AVENUE
Suite 600
Dallas, TX 75204

Civil Engineers:
HUITZ ZOLLARS, INC.
3131 MCKINNEY AVENUE
Suite 600
Dallas, TX 75204