



TBS

landscape architects, planners & designers

1306 may street
#100
fort worth, tx 76104
(817) 870-9668
tbsplanners.com

project
lemmon and oak lawn

Greg Couland
StreetLight Residential
Dallas, TX
214.420.2566

project number
FW19133



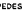



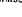
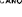
issue date
01/06/2020

designed: EG
drawn: MA
reviewed: JD

sheet 001
**overall
landscape plan**

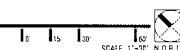
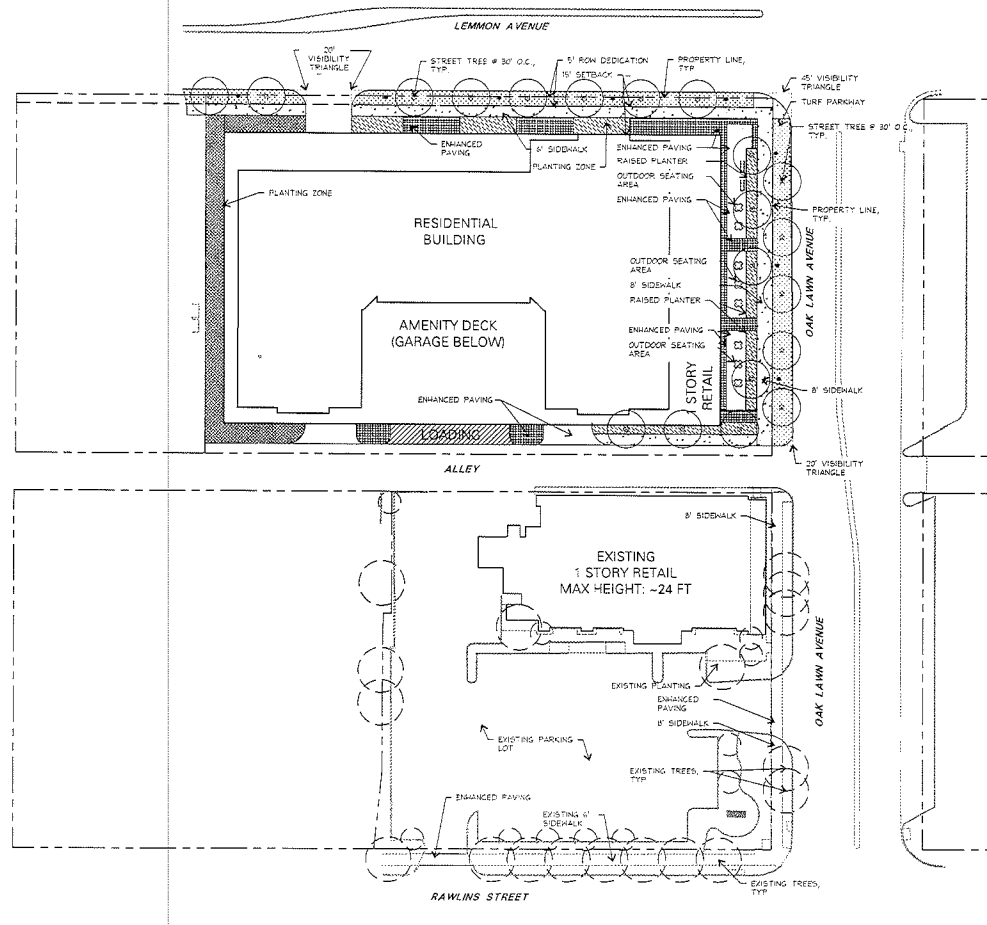
sheet
LP1.01

LEGEND

-  CONCRETE SIDEWALK
-  ENHANCED PAVING AREA
-  PEDESTRIAN LIGHT POLE
-  TURF GRASS
-  PLANTING AREA GROUNDCOVER/SHRUB
-  PLANTING AREA SCREEN SHRUB
-  CANOPY TREE
-  EXISTING TREE

NOTE:
ALL LANDSCAPE MATERIAL SHALL BE
SELECTED FROM APPROVED PLANT LIST

LANDSCAPE REQUIREMENTS Landscape Plan 'A'	Required	Provided
Total Lot Landscape (57,000 SF.)	5700 SF (10%)	5823 SF (10%)
Front Yard Setback 10' Req'd	4900 SF	9148 SF
Front Yard Landscape 40% of Req'd	2360 SF (47%)	3393 SF (49%)



1 overall landscape plan 'A'

Exhibit S-151B

Planned Development
Subdistrict No. 151

Planned Development
District No. 193

31438

200231

FW19133 - Lemmon & Oak Lawn03 Development02_Schematic Design01_CAD02_Sheets151A-LP1511B.dwg