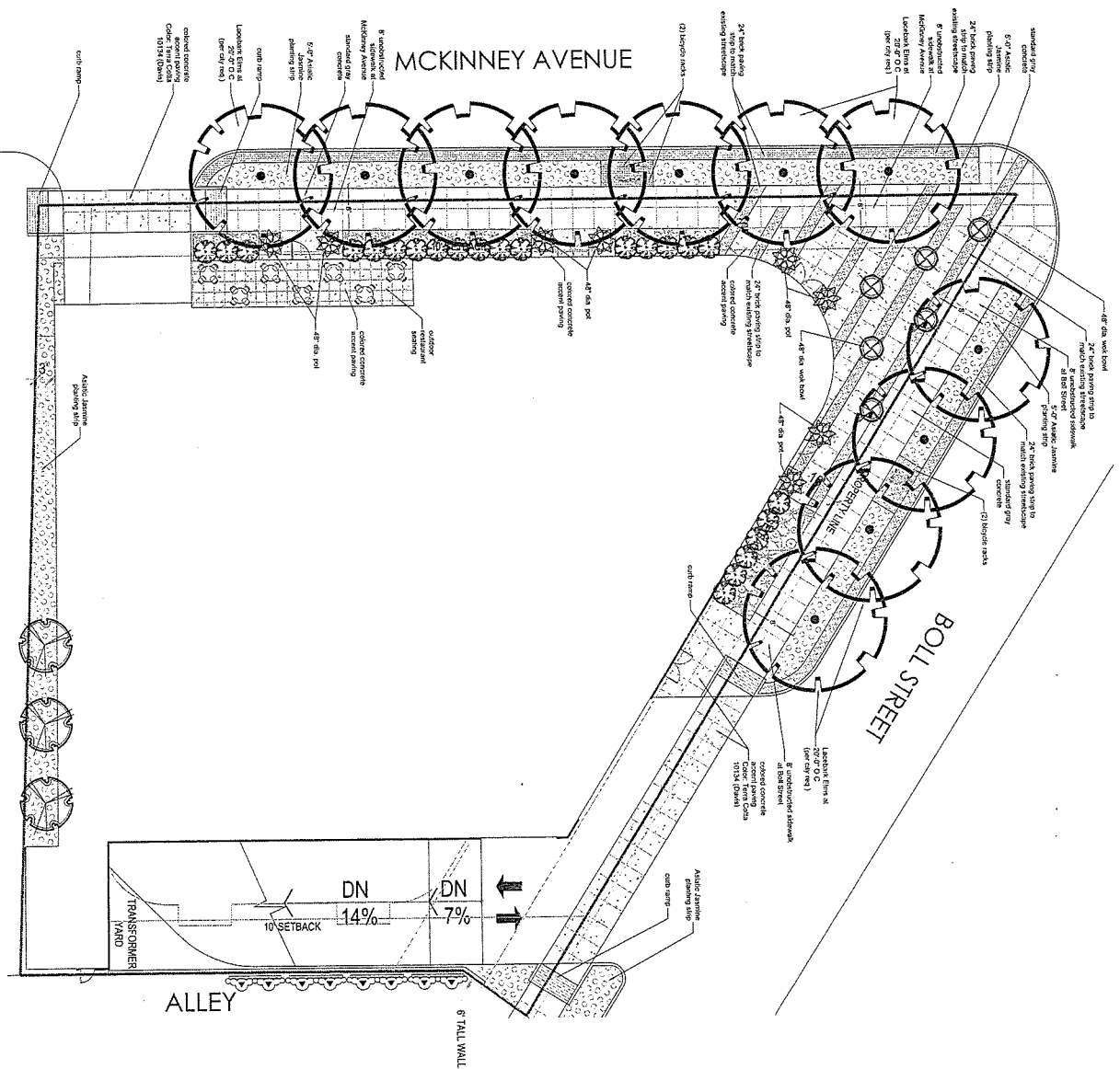


LANDSCAPE PLAN
GROUND LEVEL



Planned Development
District No. 127

Planned Development
District No. 193

Approved
City Plan Commission
December 1, 2016

2156-254

PLANT PALETTE - GROUND LEVEL

CANOPY TREES	SIZE/QUANTITY
<i>Juniper prostrata</i>	3'-4' Cal/single trunk Qty: 11
<i>Juniperus horizontalis</i>	3'-4' Cal/single trunk Qty: 03
<i>Loganstonia indica</i>	2' Cal/single trunk Qty: 03
<i>Carpe munita</i>	Qty: 03

SHRUBS	SIZE/QUANTITY
<i>Ulmella chinensis</i>	5 Gal. 1 Qty: 28
<i>Chinese fringe flower</i>	5 Gal. 1 Qty: 28

GROUNDCOVERS/LINERS	SIZE/QUANTITY
<i>Trichostema coccineum</i>	1 Gal.
<i>ASIANIC JASMINE & FURBLE WINTERCREEPER MIX</i>	1.3 Gal.
<i>Flowering groundcover & low-lying</i>	1.3 Gal.
<i>Ornamental grass</i>	1.3 Gal.
<i>4-tinge muscari - lilac</i>	1.3 Gal.
<i>Androsace lugens</i>	1.3 Gal.
<i>Salvia greggii - ADUKAN SAGE</i>	1.3 Gal.
<i>Carolina Jessamine</i>	1.3 Gal.

ACCENTS

NAME	SIZE/QUANTITY
<i>Rosa x Portland</i>	5 Gal. 1 Qty: 08
<i>RONCOON ROSE</i>	5 Gal. 1 Qty: 18
<i>HORSERAIL RED</i>	(3 in ea. pot)

LANDSCAPE CALCULATIONS

LOT SIZE: 19,785 s.f. (19.45 acres)

LANDSCAPE AREA: 11,075 s.f.

FRONT YARD AREA (FYA): 2,875 s.f.

FRONT YARD LANDSCAPE REQUIREMENTS: 1,685 s.f. (16%)
Provided: 785 s.f. (27%) - DO NOT MEET

GENERAL PLANNING AREA (GPA) REQUIREMENTS: 3,211 s.f. (17% of FYA)
Provided: 600 s.f. (12%)

SPECIAL PLANNING AREA (SPA) REQUIREMENTS: 1,691 s.f. (16% of FYA)
Provided: 1,685 s.f. (16.3%)



NO.	DATE	REVISION