

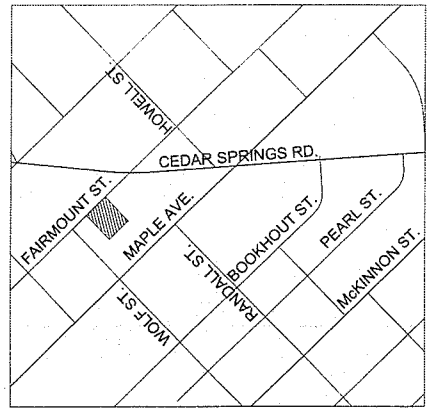
09/26/14  
PROJECT NUMBER

BALDWIN ASSOCIATES  
3904 Elm Street, Suite B  
Dallas, Texas 75226  
OFFICE: 214.824.7949  
MOBILE: 214.824.7949  
rob@baldwinplanning.com

Baldwin Associates

2917 - 2921 FAIRMOUNT STREET  
CITY OF DALLAS, TEXAS

29978 160117



VICINITY MAP  
NTS

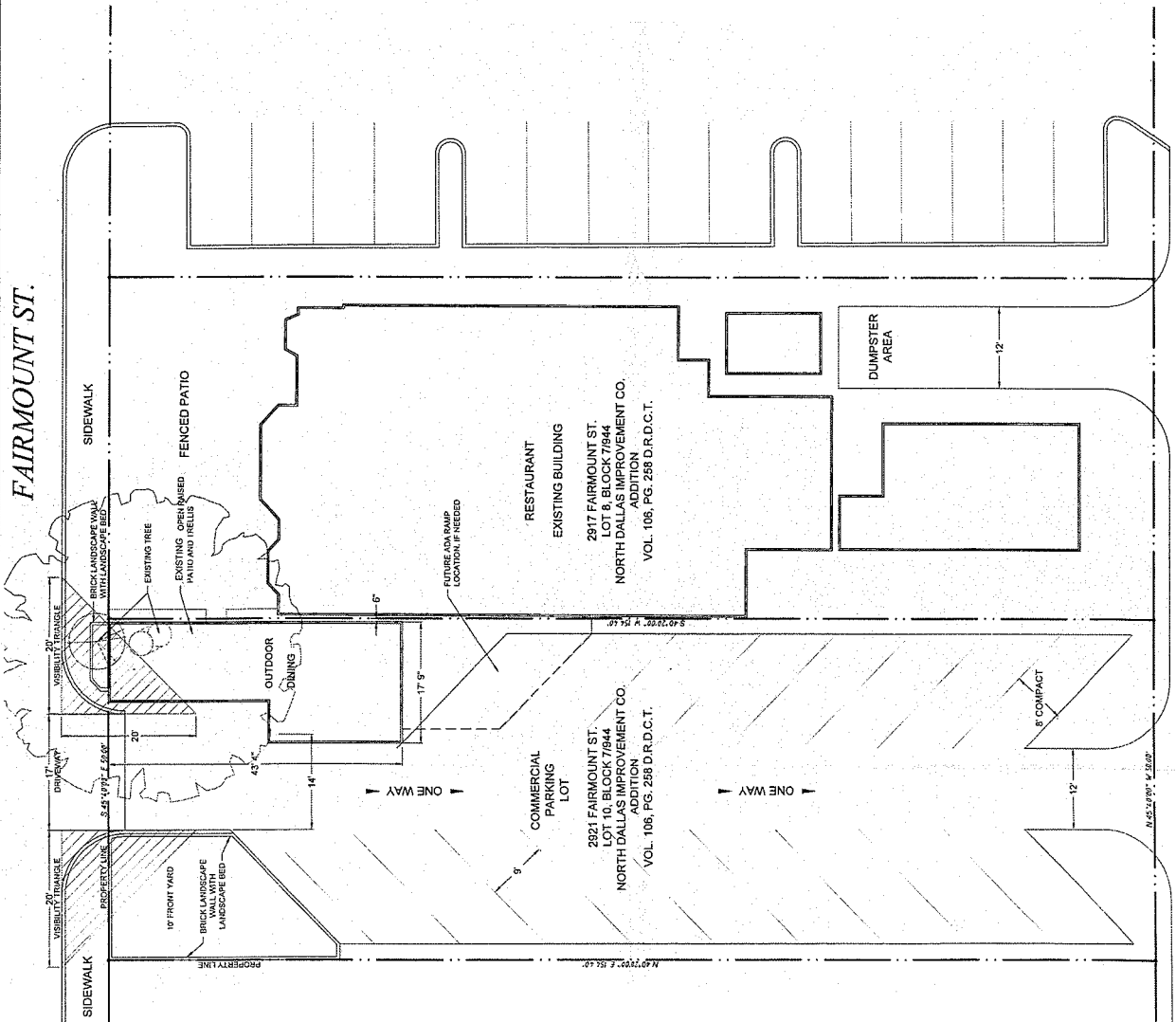


- DEVELOPMENT PLAN for Outdoor dining, Restaurant and Commercial Parking
- Total Lot Area: 15,443.8 sq. ft.
- Total Bldg. Area: 3,868 sq. ft.
- Yard, Lot & Space requirements per GR General Retail subarea district, except for accessory structures as shown
- Visibility obstruction limited to landscape wall, unenclosed trellis, raised patio, and trees.
- Existing sidewalk in location shown
- LANDSCAPE PLAN for 2921 Fairmount St.
- Existing trees
- Landscape bed with seasonal plantings

**Development Plan**  
Exhibit S-120A  
PDD No. 193, PDS No. 120

DEVELOPMENT PLAN  
Z134 - 1353

Approved  
City Plan Commission  
November 5, 2015



ALLEY

**SITE PLAN**  
SCALE: 1/8" = 1'-0"

