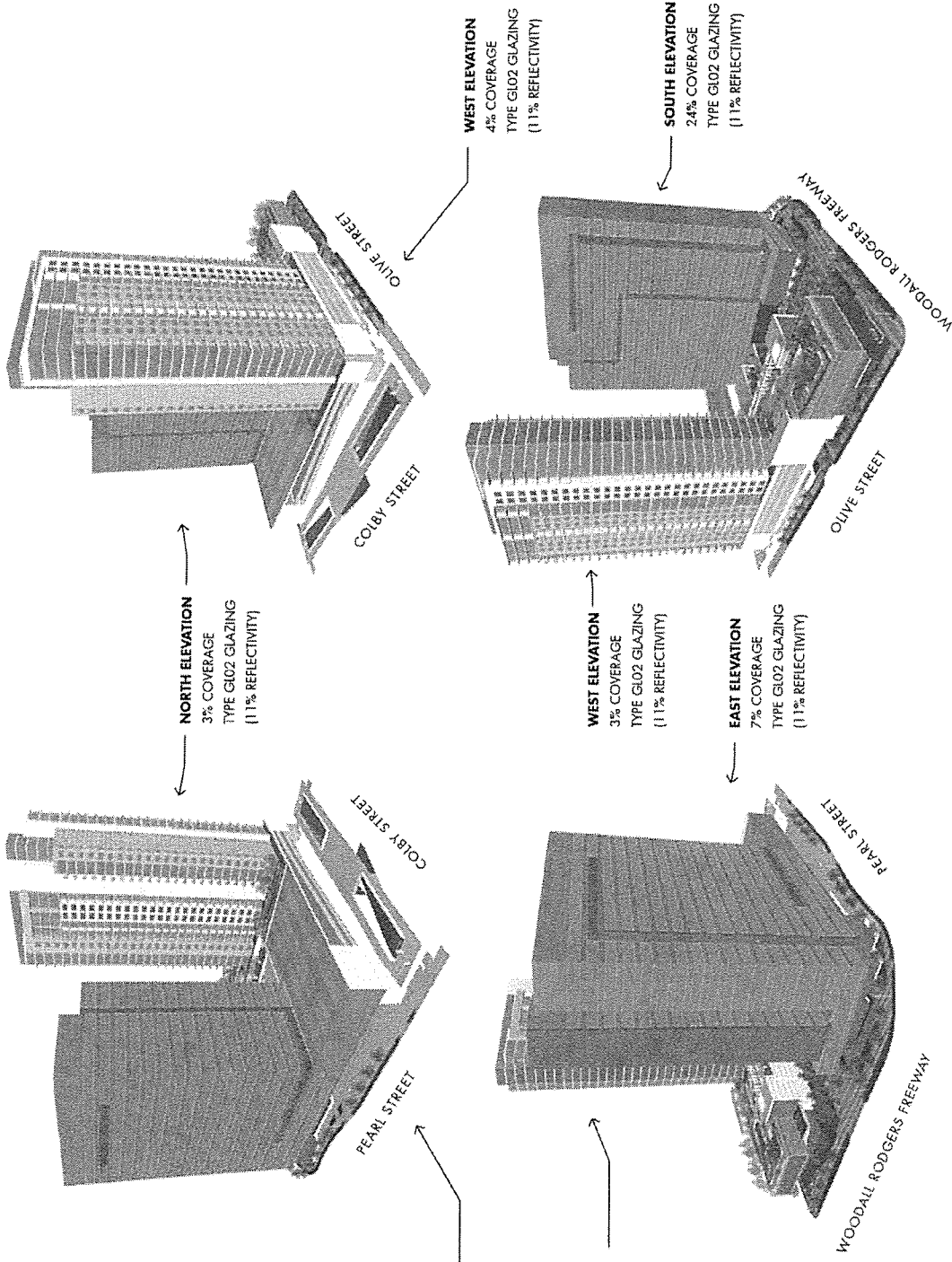


# BUILDING FACADE GLASS PROPERTIES

- G101B\***  
SPANDREL GLASS W/ 27%  
REFLECTIVITY AS BASE CONDITION
- G101A\***  
VISION GLASS W/ 27%  
REFLECTIVITY AS BASE CONDITION
- G102A**  
VISION GLASS W/ LESS  
REFLECTIVITY (11%) REF. SHEET 5
- G103A\***  
MONOLITHIC GLASS - VISION AT  
LOBBY (LOW IRON)

\* SHOWN FOR ILLUSTRATIVE PURPOSES ONLY.



27.45.101 (REV)  
REFLECTIVITY PLAN

PARKDISTRICT

Approved  
City Plan Commission  
June 4, 2015

HKS  
DALLAS, TEXAS  
MARCH 23, 2015

Reflectivity Plan  
Exhibit S-117B  
PDD No. 193, PDS No. 117