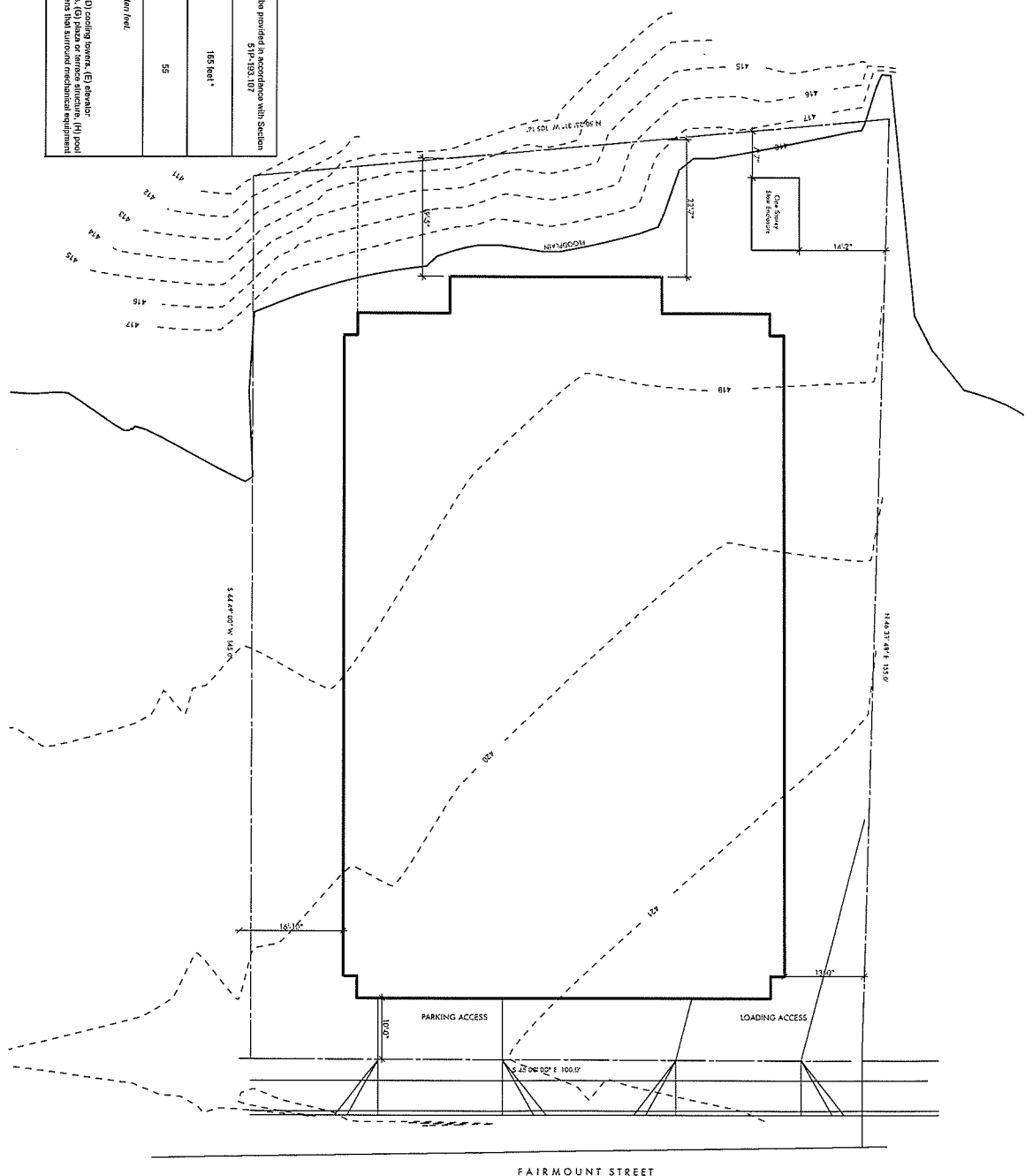


Approved
 City Plan Commission
 February 19, 2015

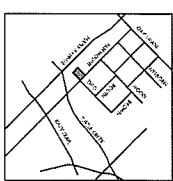
Development Plan
 Exhibit S-114A
 PDD No. 193, PDS No. 114

Required Parking	To be provided in accordance with Section 51P-493.107
Maximum Structure Height	165 feet
Maximum number of dwelling units	55

* The following elements may exceed the overall height by ten feet:
 (A) chimneys, (B) spires, (C) communication towers, (D) cooling towers, (E) elevator machinery, (F) antennas, (G) weather vanes, (H) flagpoles, (I) roof structures, (J) skylights, (K) vent stacks, and (L) visual screens that surround mechanical equipment



FAIRMOUNT STREET



architectural
 2014-317 Ashland St. West
 Dallas, TX 75201
 Tel: 214-223-8000
 Fax: 214-223-8000
 www.aaarchitectural.com

GG Dallas Pearl LP



3503 Fairmount Street
 Dallas, TX

Development Plan
 ZONING CASE Z134397
 1/8"=1'-0"

NO. 1
 ISSUANCE
 REVISION FOR ZONING ADJUSTMENT
 DATE: Jun 22 2015