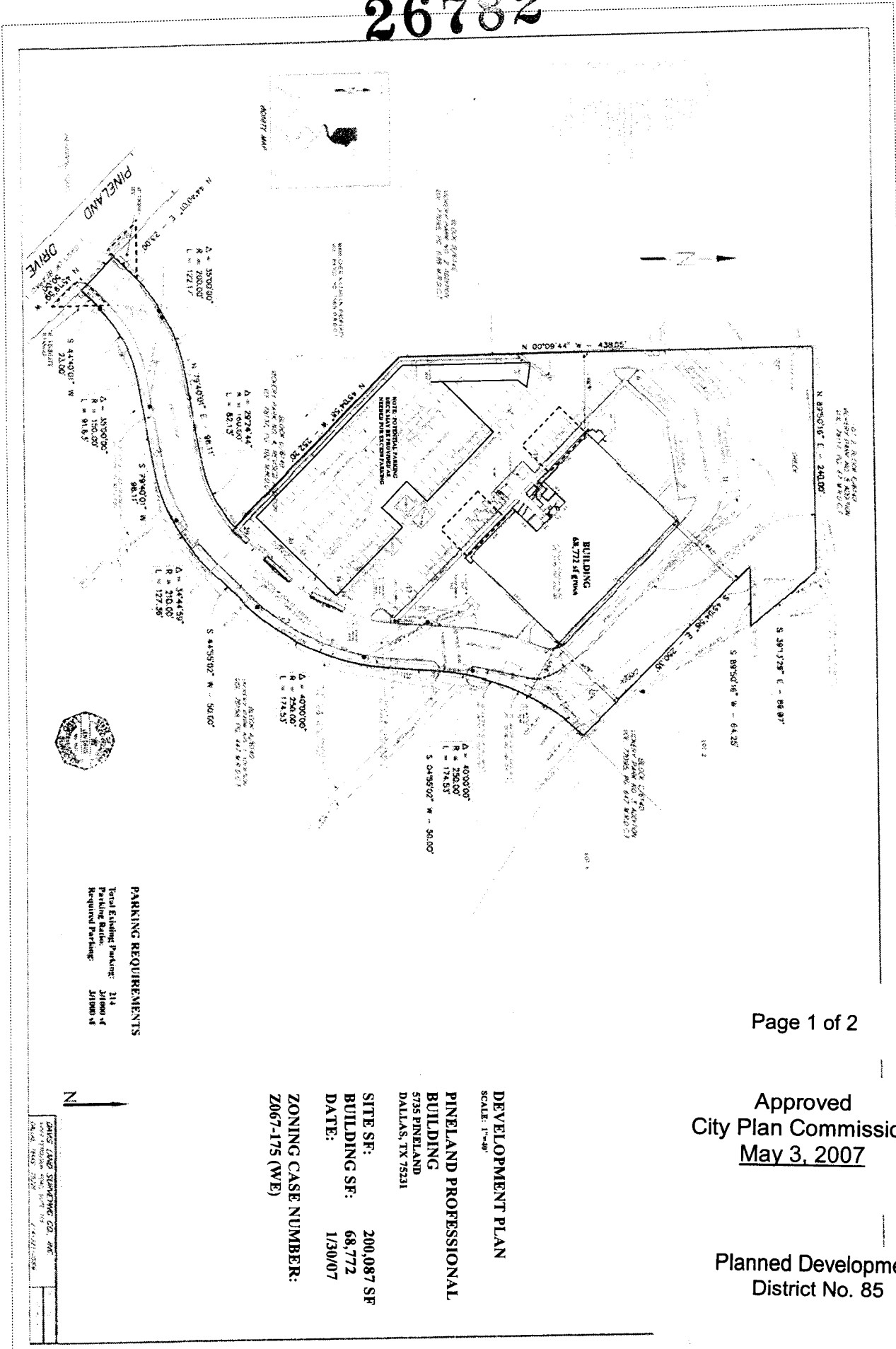


26782



PARKING REQUIREMENTS

Total Excluding Parking: 214
 Parking Ratio: 21000 SF
 Required Parking: 21000 SF

Approved
 City Plan Commission
 May 3, 2007

Planned Development
 District No. 85

DEVELOPMENT PLAN
 SCALE: 1"=40'

PINELAND PROFESSIONAL BUILDING
 5735 PINELAND
 DALLAS, TX 75231

SITE SF: 200,087 SF
BUILDING SF: 68,772
DATE: 1/30/07

ZONING CASE NUMBER:
 Z067-175 (WE)

DWG. LAND SURVEYING CO., INC.
 1400 N. GILBERT ST., SUITE 100
 DALLAS, TEXAS 75207
 TEL: 972.382.2000
 FAX: 972.382.2001

