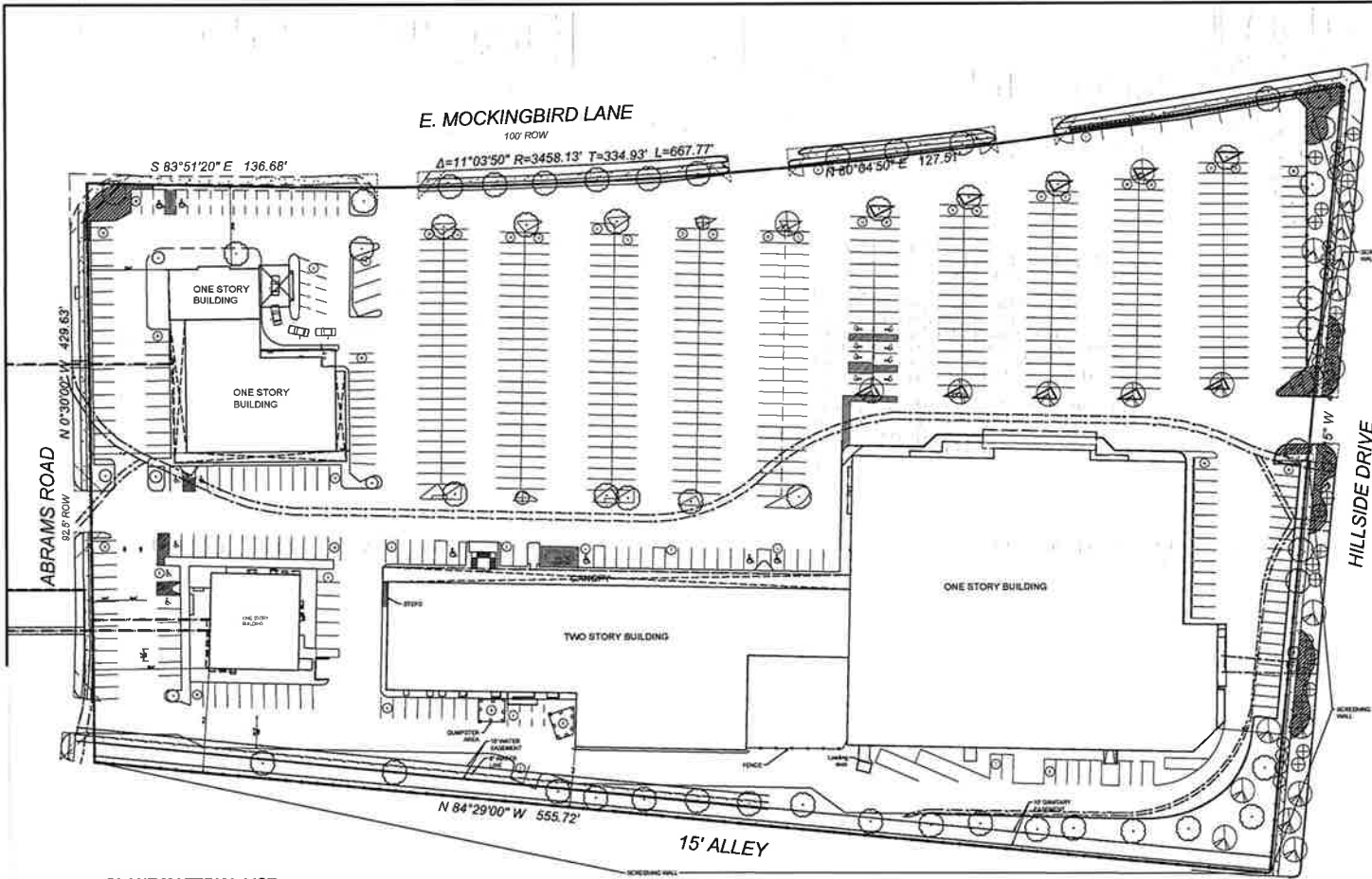


210174

31739

Exhibit 79B



SITE INFORMATION

SITE AREA:	10.2 ACRES
LANDSCAPE REQUIREMENTS STREET BUFFER ZONE	Provided
STREET TREES	
1 Large/Medium Tree/40ft frontage:	42 Required
(1674 LF/40)	
Large/Medium:	26 Trees
Small:	23 Trees
TOTAL:	49 Trees
RESIDENTIAL BUFFER ZONE	
1 Large/Medium tree/40 LF:	14 Required
Large/Medium:	20 Provided
Surplus:	6 Large Trees

SITE TREES

1 Tree/4,000 SF Lot Area Required:	109 Trees
EXISTING:	
Large/Medium Trees	46 Trees
PROPOSED:	
Small Canopy Trees	19 Trees
EXISTING:	
Small Canopy Trees	20 Trees
PROPOSED:	
Small Canopy Trees	24 Trees
TOTAL:	109 Trees

PROPOSED:

Evergreen Shrub, Min. 24" in height	54 Shrubs
Install 3 ft on center	
LANDSCAPE DESIGN OPTIONS	
10 Legacy Trees (2 points each)	
Points Provided:	20
Large Enhanced Residential Buffer Zone	
Points Provided:	5
Large/Medium Tree Caliper Increase	
Points Provided:	5
Total Points Required:	30
Total Points Provided:	30

PLANT MATERIAL LIST SUMMARY CHART

COMMON NAME
LARGE CANOPY TREES OPTIONS
SHRIMP OAK, CATHEDRAL LIVE OAK, CEDAR ELM, URSANTIE ASH, CHINESE PISTACHIO
ORNAMENTAL MEDIUM TREE OPTIONS
TEXAS OR OKLAHOMA REDBUD, MEDICAN PLUM, POSSUMHAW, YALPON HOLLY, CRAPE MYRTLE
SHRUB OPTIONS
GREEN OLEND TEXAS SAGE, DWARF WAX MYRTLE, KALEIDOSCOPE ABELIA, SLURB-N-E LIQUISTRUM, BRAKELIGHTS YUCCA, SOFT LEAF YUCCA, TAM JANPER, WAX FLEMING YALPON, DWARF YALPON HOLLY
GROUND COVER OPTIONS
PURPLE WINTERKEEPER, BIG BLUE LIROPE

NOTES:

1. New trees in islands to match existing species, and use ornamental trees only where light poles prohibit use of large trees; Every island to have a minimum of 1 tree.
2. Repair any existing damaged irrigation; Provide new irrigation to any new planting areas.
3. Pruning and trimming of landscape and trees will be maintained to allow the trees and landscape to grow and achieve their natural shape and size.
4. New plantings to reflect plant palette provided on this page.
5. Recent plantings in the beds between the screening walls and sidewalks adjacent to Hillside Drive will be re-worked to remove boxwood, group Indian hawthorne and fill the remaining space with shrubs from the plant palette.



1 LANDSCAPE PLAN
SCALE: 1" = 30'-0"

Planned Development
District No. 79

Approved
City Plan Commission
November 5, 2020

Z190-108(AU)

10/28/2020
PROJECT NUMBER
CASE NUMBER

Baldwin ASSOCIATES
3904 Elm Street, Suite B
Dallas, Texas 75226
MOBILE: 214.729.7949
OFFICE: 214.624.7949
rob@baldwinplanning.com

Baldwin Associates

MOCKINGBIRD & ABRAMS
CITY OF DALLAS, TEXAS