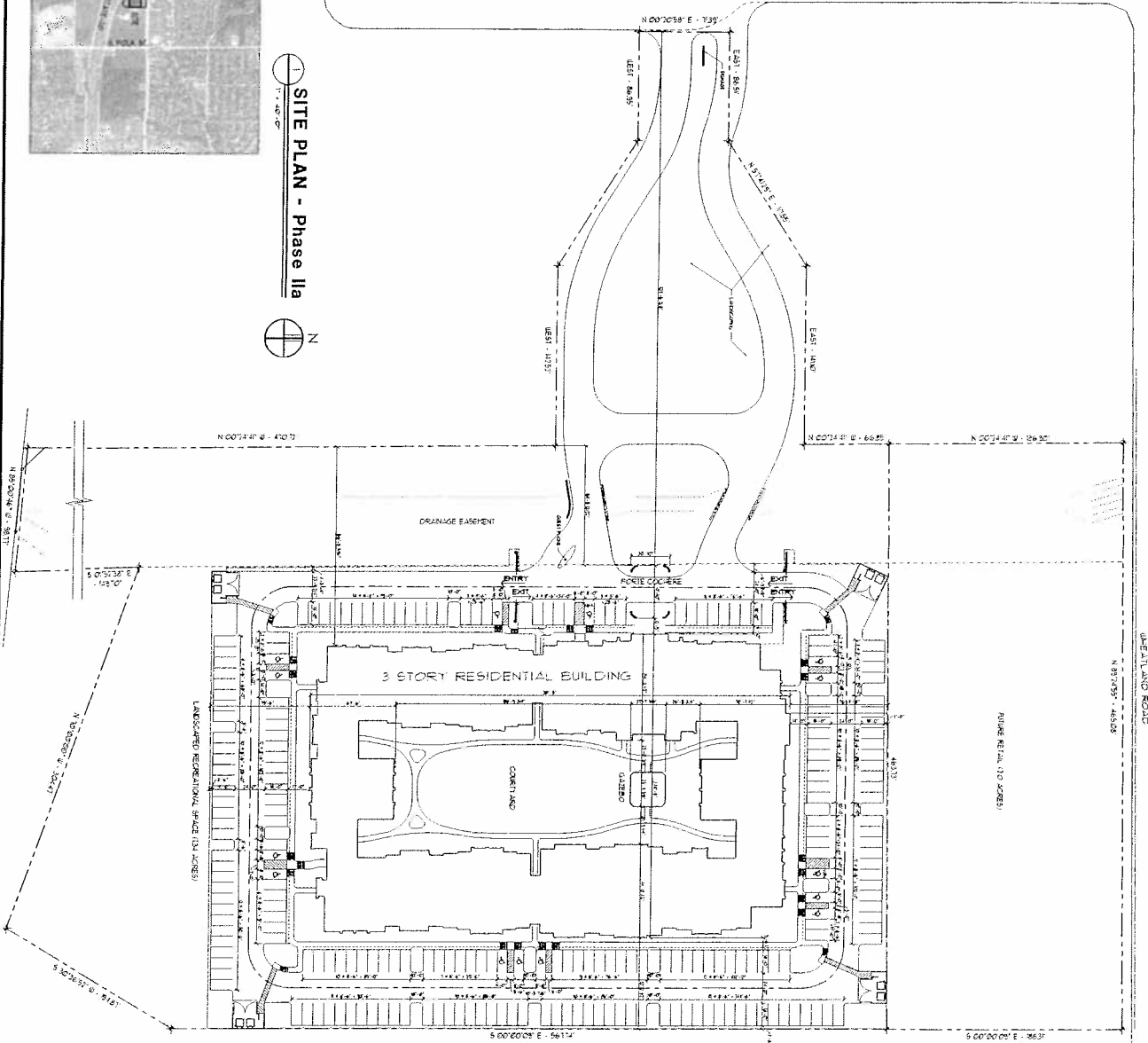


28293



SITE PLAN - Phase Iia



Planned Development
District No. 598

Approved
City Plan Commission
January 6, 2011

USE: Retirement Housing
DESCRIPTION: 107 Dwelling Units, 700 sqm + 83,145 sqm
HEIGHT: Low point of main roof + 20'-10" 3/8"
High point of main roof + 45'-7"
STORIES: 3
FENCE: 6' High painted metal open picket fence and gates
PAVING: 100% PAVED
LANDSCAPING: 98,756 sq ft / 29,405 sq ft + 6.6%

Permitted: 107 units
Total Floor Area: 107,145 sqm
Total Building Footprint: 700 sqm
Total Paving: 100%
Total Landscaping: 98,756 sq ft / 29,405 sq ft + 6.6%

COPYRIGHT © 2010 Matthew J. Auerbach, Architect. This document shall not be reproduced without the permission of the architect.

1840 J.A. DEVELOPMENT PLAN EXHIBIT (2/20/10/10)

| NO. | DESCRIPTION | DATE |
|-----|------------------|----------|
| 1 | PRELIMINARY PLAN | 10/10/10 |
| 2 | FINAL PLAN | 10/10/10 |
| 3 | EXHIBIT | 10/10/10 |

FRIENDSHIP VILLAGE
A Seniors Community
Dallas, TX
Job No. 0941

MCCASKEY & ASSOCIATES

ARCHITECTS

1840 J.A. DEVELOPMENT
1840 J.A. DEVELOPMENT
1840 J.A. DEVELOPMENT
1840 J.A. DEVELOPMENT
1840 J.A. DEVELOPMENT