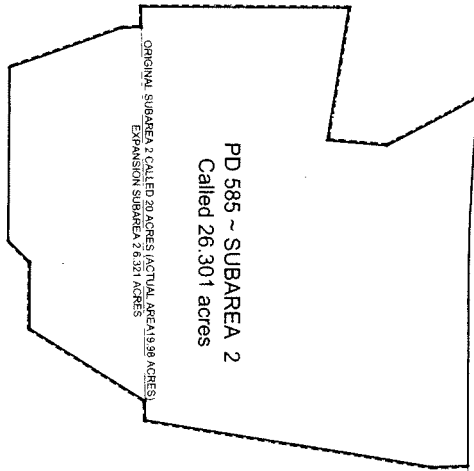


28004

ZONING MAP
(VACANT)

SOUTH MERRIFIELD ROAD
(A VARIABLE WIDTH RIGHT-OF-WAY)

ZONING MAP
(VACANT)



ZONING MAP
(VACANT)

ZONING MAP
(VACANT)

STATE HIGHWAY 408
(A VARIABLE WIDTH RIGHT-OF-WAY)

PD 186
(VACANT)

PD 585 ~ SUBAREA 1
28,358 ACRES

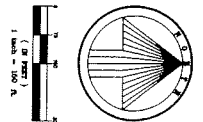
KEST BOULEVARD
(150 FOOT RIGHT-OF-WAY)

PD 186
(VACANT)

Planned Development
District No. 585

Approved
City Plan Commission
August 19, 2010

Z090-194(W/E)



City of Dallas
Department of Planning and Economic Development
EX 585C
V.P.C. Case Number
PHC001

Project Name:
City Plan Commission
City of Dallas

POTTER'S HOUSE CHURCH
REMOTE PARKING EXPANSION
PD 585 AMENDMENT
 Dallas, Texas

EXHIBIT 585C - SUBAREA BOUNDARY MAP

Scale: 1" = 150'
 Date: 08/19/10
 Drawn by: DD
 Checked by: DD

Revisions:

08/19/10 DD DD 100%
 08/19/10 DD DD 100%
 08/19/10 DD DD 100%
 08/19/10 DD DD 100%

