

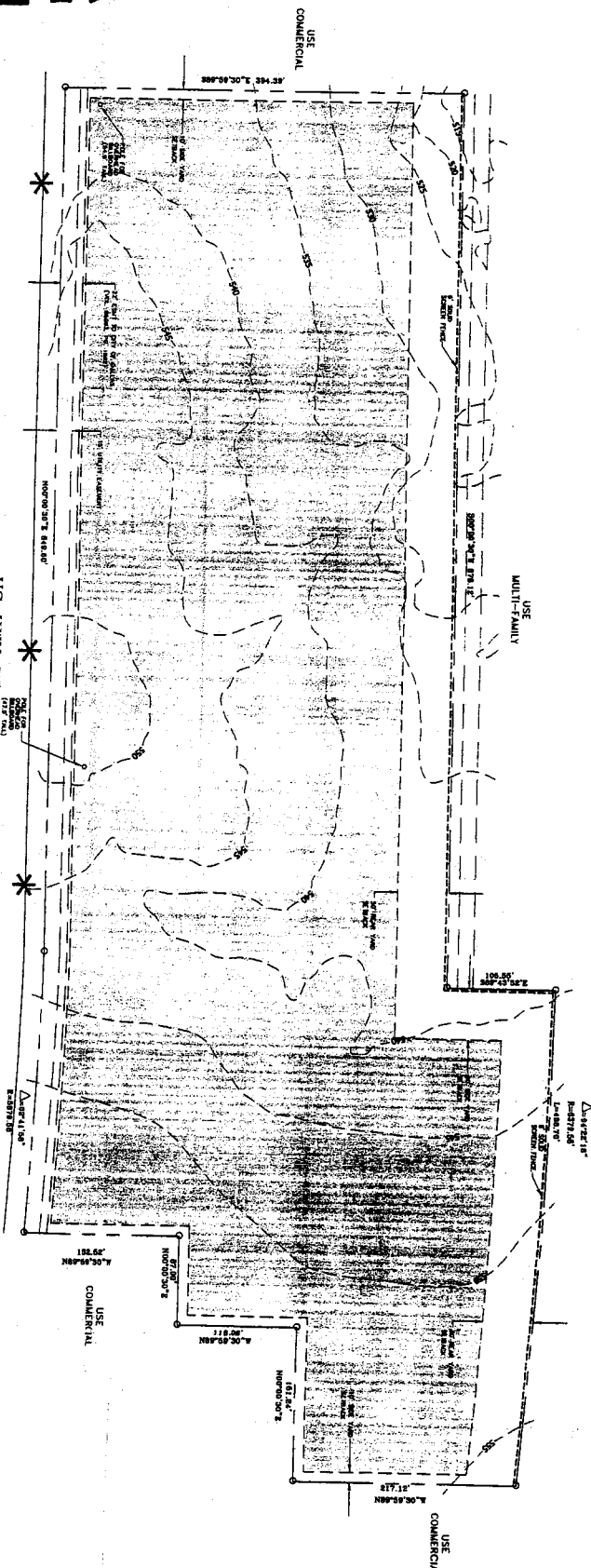
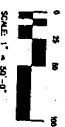
26213

TABULATION LEGEND			
TRACT AREA 12.289 ACRES (338'60" BY 1,377'0")			
REGULATIONS	GOV. USES	VEHICLE DISPLAY, SALES AND SERVICE USE	
A. MINIMUM FLOOR AREA	2,138,328 sq. ft.		
B. FLOOR AREA RATIO	4.6:1		
C. LOT COVERAGE	50%		
D. HEIGHT	27'		
E. MAXIMUM STORES	20		
F. MINIMUM FRONT YARD SETBACK	15' MIN.		
G. MINIMUM FRONT YARD SETBACK TO SIDE YARD	20'		
H. MINIMUM SIDE YARD SETBACK TO COMMERCIAL	10'		

LEGEND	
*	PROPOSED POINT OF ENTRY / EXIT COMMERCIAL TRUCK

US HWY 75
(North Central Expressway)

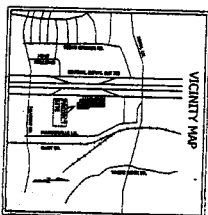
CONCEPTUAL PLAN



Planned Development District
No. 577

Approved
City Plan Commission
November 17, 2005

Z056-101 (R8)



CONCEPTUAL PLAN

PROJECT NUMBER	PRELIM
PROJECT DATE	DATE
PROJECT NAME	REVISION
PROJECT LOCATION	DATE
PROJECT OWNER	DATE
PROJECT ENGINEER	DATE
PROJECT ARCHITECT	DATE
PROJECT LANDSCAPE ARCHITECT	DATE
PROJECT CIVIL ENGINEER	DATE
PROJECT MECHANICAL ENGINEER	DATE
PROJECT ELECTRICAL ENGINEER	DATE
PROJECT ENVIRONMENTAL ENGINEER	DATE
PROJECT TRAFFIC ENGINEER	DATE
PROJECT GEOTECHNICAL ENGINEER	DATE
PROJECT HISTORIC PRESERVATION	DATE
PROJECT OTHER	DATE