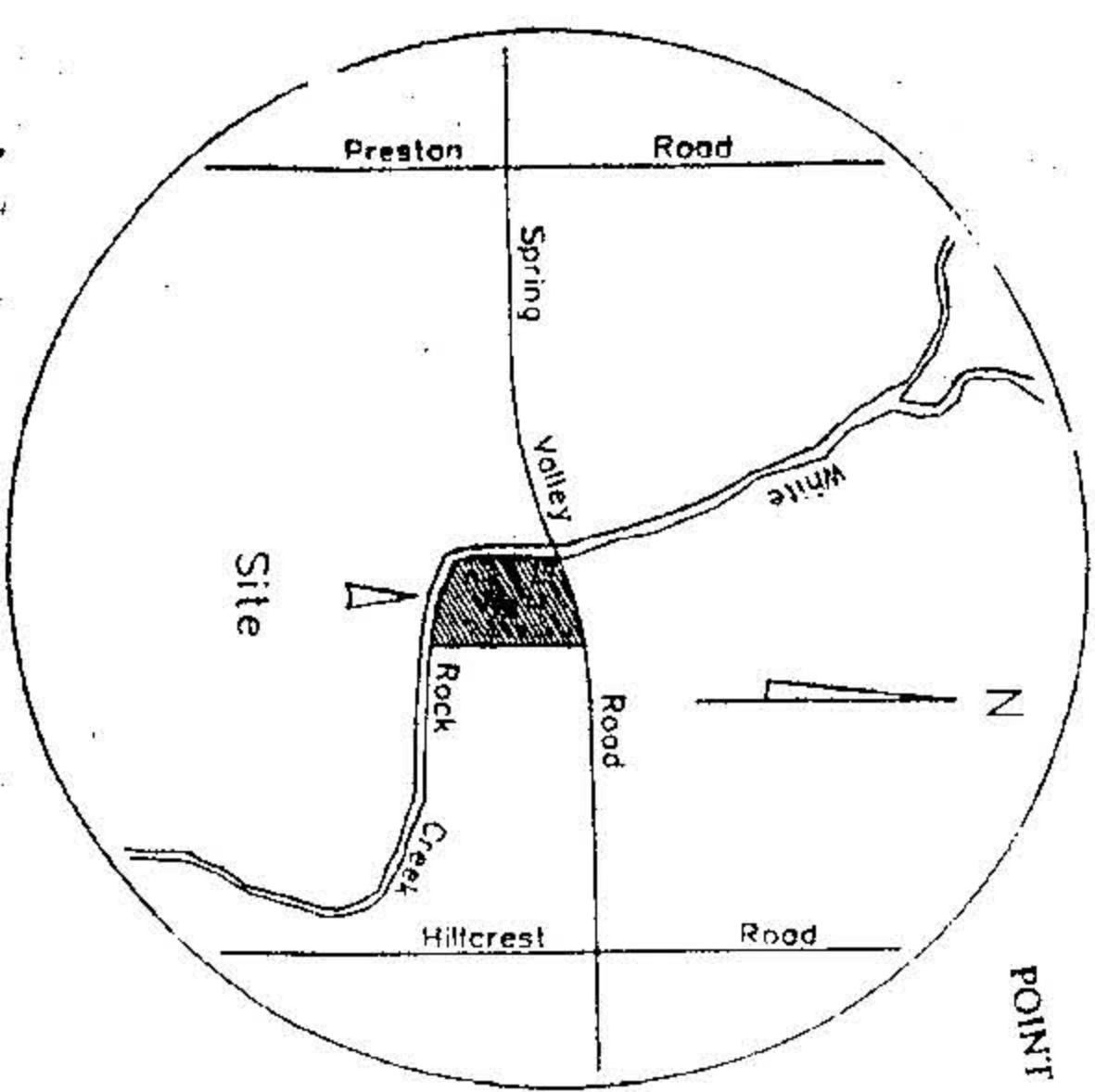
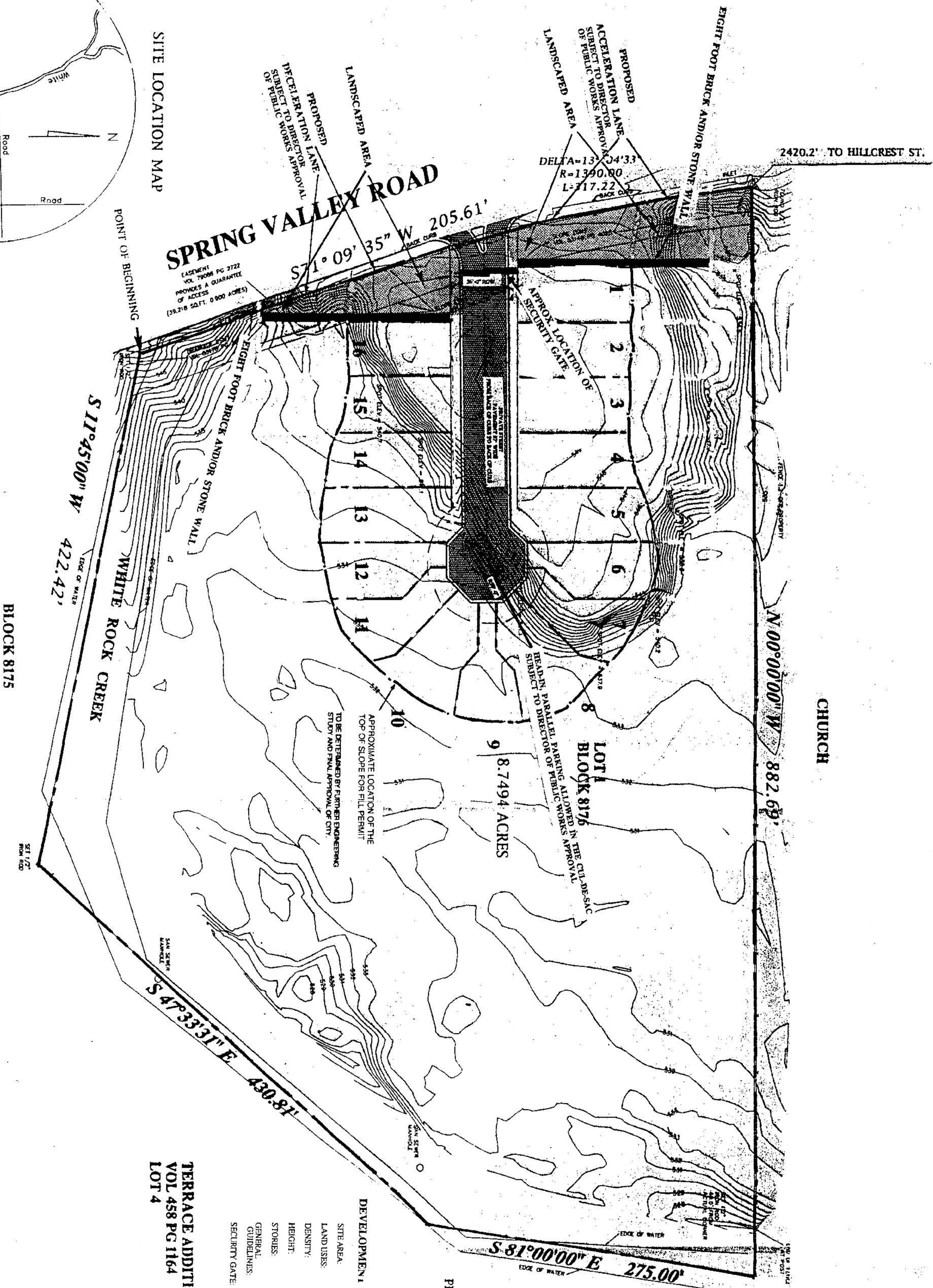


EXHIBIT 558A



SITE LOCATION MAP



CHURCH

NORTHWOOD CLUB
BLOCK 7421

PLANNED DEVELOPMENT DISTRICT
FOR
SINGLE FAMILY USE AND
PRIVATE STREET

DEVELOPMENT PLAN

- SITE AREA: 8.7494 ACRES
- LAND USES: R-1/2 AC(A) USES AND PRIVATE STREET
- DENSITY: MAXIMUM 16 DWELLING UNITS
- HEIGHT: 36' TO THE HIGHEST POINT OF THE ROOF
- STORIES: TWO
- GENERAL GUIDELINES: R-1/2 AC(A) STANDARDS
- SECURITY GATE: MUST BE LOCATED AT LEAST 25 FEET FROM A PUBLIC RIGHT-OF-WAY

TERRACE ADDITION
VOL. 458 PG. 1164
LOT 4

993029
24039
APPROVED BY
CITY COUNCIL

SEP 22 1999

DEVELOPMENT PLAN

PLANNED DEVELOPMENT DISTRICT NO. 558
7998A-226 / 10647-N.C.(FD)

Approved
City Plan Commission
8-26-99

Approved
City Secretary

