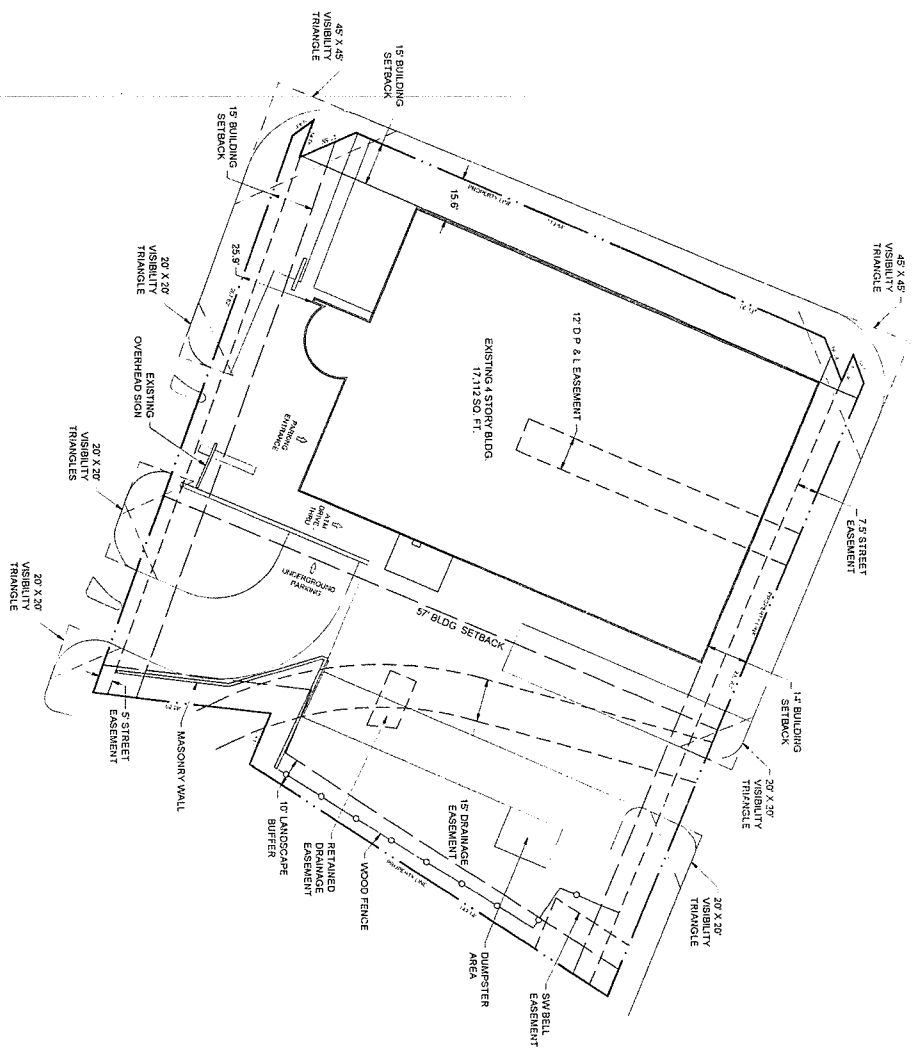
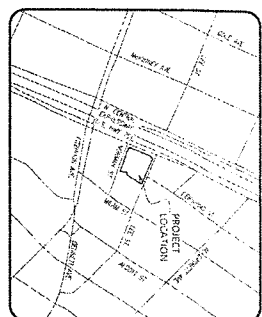


571-5417



 **DEVELOPMENT PLAN**
SCALE: 1" = 20'-0"



DEVELOPMENT PLAN
4228 N. CENTRAL EXPRESSWAY

SITE AREA: 1.093 AC
MAX. FLOOR AREA RATIO: 1.09
MAX. COVERAGE: 20,000 SF
MAX. BLDG. HT.: 70' / 4 STORIES
SETBACKS AS SHOWN

Development Plan
Exhibit 556A
PDD No. 556

Approved
City Plan Commission
April 2, 2015

CADDO
CITY OF DALLAS, TEXAS

Baldwin
Associates

BALDWIN ASSOCIATES
3904 Elm Street, Suite B
Dallas, Texas 75226
MOBILE: 214.729.7949
OFFICE: 214.824.7949
rob@baldwinplanning.com

02/23/15
PROJECT NUMBER:
CASE NUMBER: