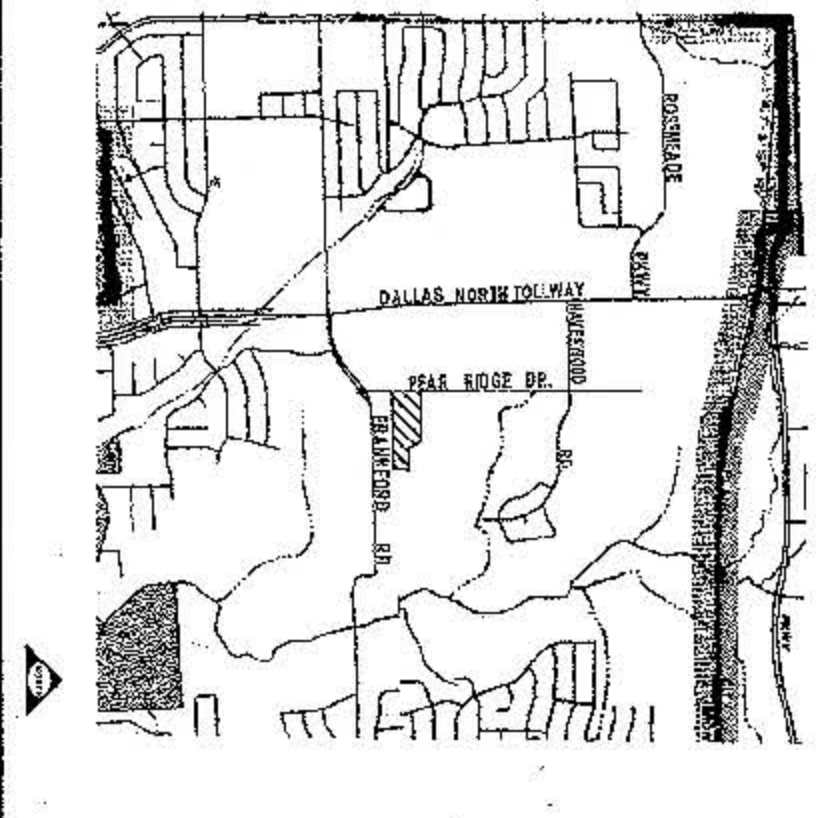


# EXHIBIT 524A

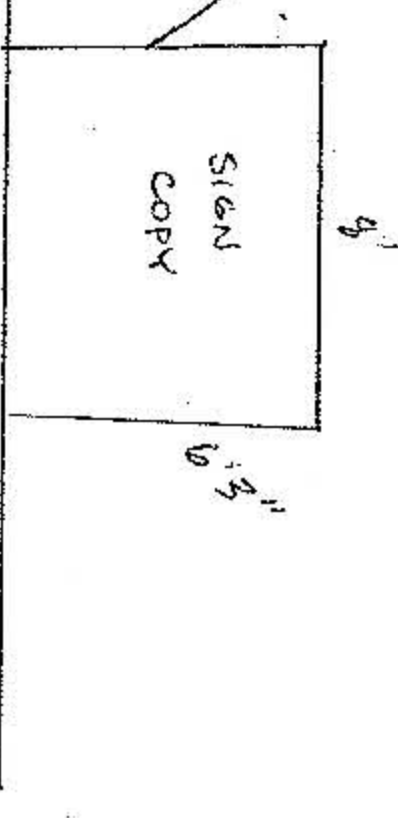
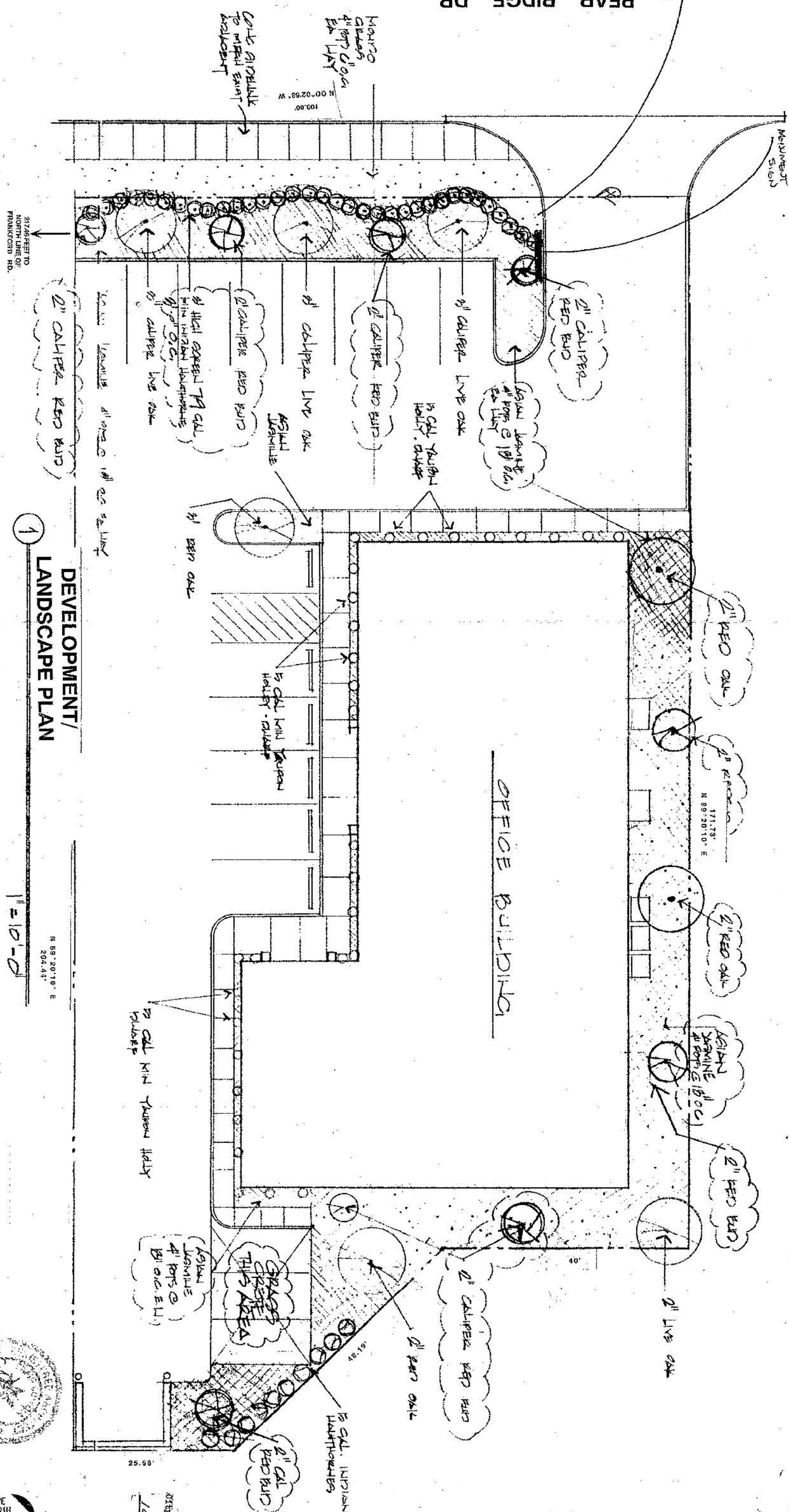
VICINITY MAP



Lot 6  
Block 7/8738

5' 6" SETBACK

PEAR RIDGE DR.



## DEVELOPMENT/ LANDSCAPE PLAN

1" = 10'-0"

ALL REQUIRED TREES MUST BE MULCHED AT A DEPTH OF 2" AROUND THE TREE AT TIME OF INSPECTION. B&B TREES MUST HAVE BURLAPPED AND WIRE REMOVED FROM TOP THIRD OF ROOTBALL AT TIME OF INSPECTION.

PROVIDE IRRIGATION SYSTEM FOR ENTIRE SITE

### MANUFACTURER PROVISIONS

- 1' 10" Landscape Buffer to Res. (Shops & Bus)
- Screening of Streets
- Landscaping
- Site Trees: 1 Tree 4000 SAFT
- Street Frontage Trees
- Street Side Trees
- Building Lot Trees
- Trees Behind 100'

### DESIGN STANDARDS

- 1' STREET BUFFER 10' MIN
- SCREENING OF STREETS
- PARKING
- TREES, SHRUBS, GRASS COVER

- 1. LINDA JONKINS
- 2. BERNARD CRASS
- 3. JUDITH HATHORN
- 4. THOMAS HOLLY
- 5. FRED RUD
- 6. LIVE OAK
- 7. RED BUD
- 8. RED OAK
- 9. LIVE OAK
- 10. RED BUD
- 11. LIVE OAK
- 12. RED BUD
- 13. LIVE OAK
- 14. RED BUD
- 15. LIVE OAK
- 16. RED BUD
- 17. LIVE OAK
- 18. RED BUD
- 19. LIVE OAK
- 20. RED BUD

983319  
23709  
APPROVED BY  
CITY COUNCIL  
NOV 11 1988

Approved  
City Plan Commission  
PLANNED DEVELOPMENT DISTRICT NO. 584  
2-978-333/10671. mecm  
McCaslin Cowden Associates

9704  
OFFICE  
CALL CENTER

9704  
OFFICE  
CALL CENTER

9704  
OFFICE  
CALL CENTER

