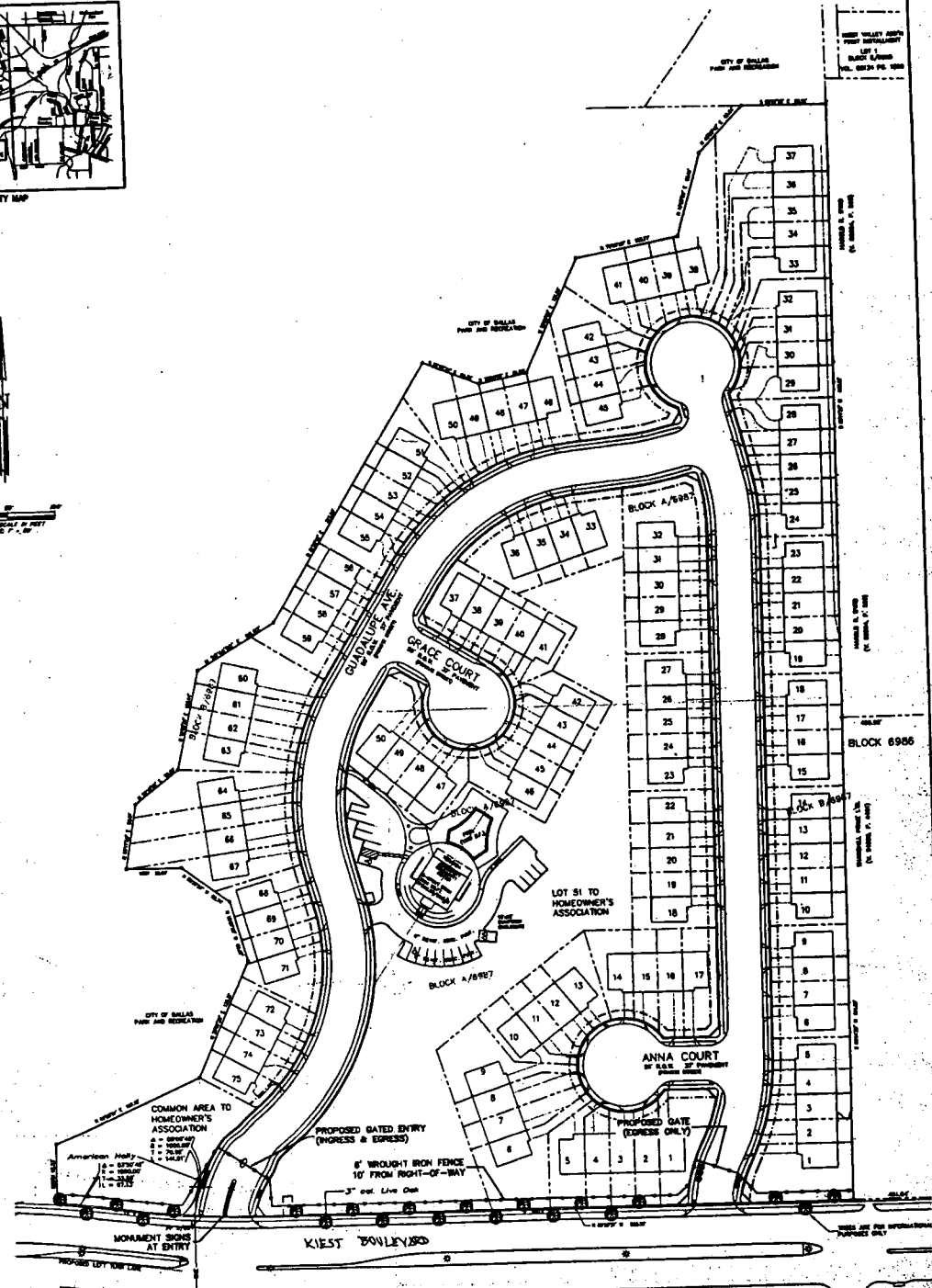
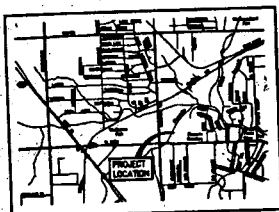


EXHIBIT 511A

P. WHEELER/VEITZMAN, INC. JUN 24 1968



COMMON AREA TO HOMEOWNER'S ASSOCIATION
Advertisement: 1/2" = 1' 0" (SEE PLAN)
1" = 1' 0" (SEE PLAN)
2" = 1' 0" (SEE PLAN)
3" = 1' 0" (SEE PLAN)
4" = 1' 0" (SEE PLAN)
5" = 1' 0" (SEE PLAN)
6" = 1' 0" (SEE PLAN)
7" = 1' 0" (SEE PLAN)
8" = 1' 0" (SEE PLAN)
9" = 1' 0" (SEE PLAN)
10" = 1' 0" (SEE PLAN)

PROPOSED GATED ENTRY (EXPRESS & EXPRESS)
6" WROUGHT IRON FENCE 10' FROM RIGHT-OF-WAY
3" out. Live Oak

981923
235 58
APPROVED BY
CITY COUNCIL

JUN 24 1968

DUNAWAY ASSOCIATES, Inc.

PLANNED DEVELOPMENT DISTRICT NO. 5111
2974 W. MIST BLVD. (SEE PLAN)

DEVELOPMENT PLAN
COLUMBIA LUXAR ADDITION TOWNHOMES
4200 BLOCK, W. MIST BLVD.
14.6 ACRES IN CITY BLOCK 6987
CITY OF DALLAS, TEXAS

REVISION	DATE	SCALE	BY	CHKD.	APP.