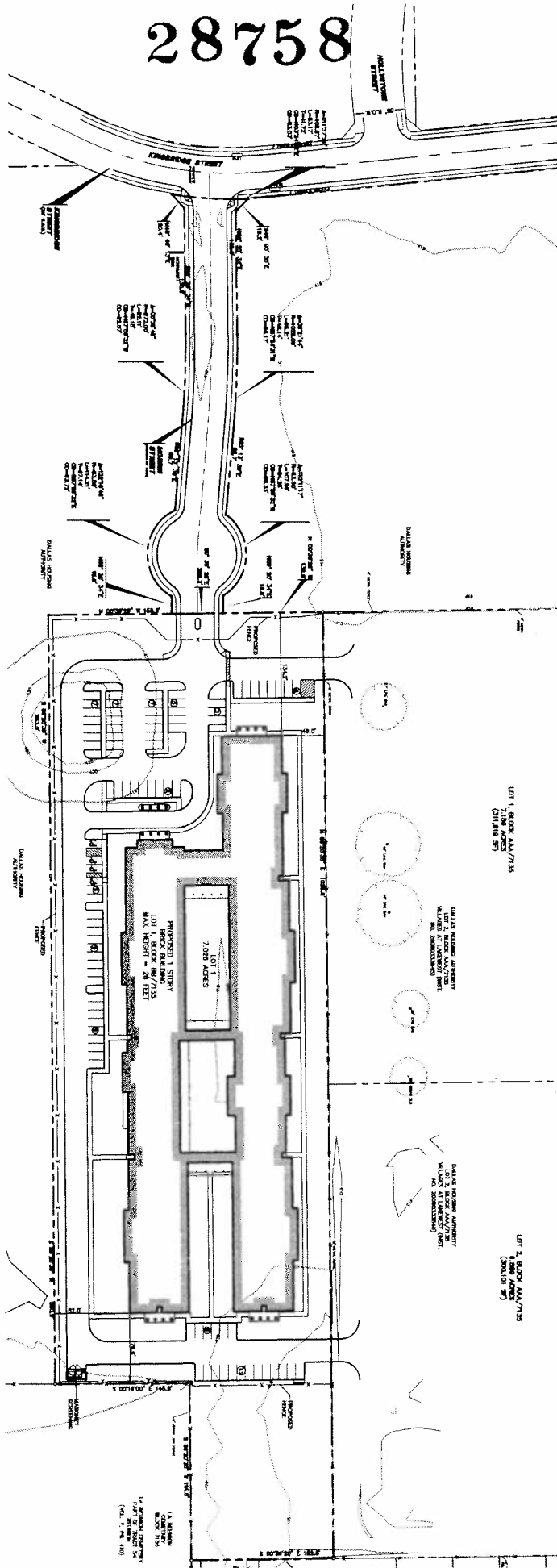
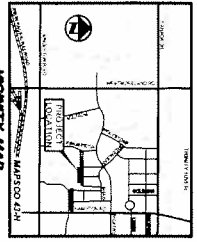


28758



SIZE DATA TABLE

NO.	DESCRIPTION	AREA (SQ. FT.)	PERCENT OF TOTAL	REMARKS
1	PROPOSED 1 STORY 7,000 SQ. FT. BRICK BUILDING TO HOUSE 100 RESIDENTS	7,000	100%	
2	PARKING	1,000	14.3%	
3	LANDSCAPING	1,000	14.3%	
4	ACCESS ROADS	1,000	14.3%	
5	UTILITIES	1,000	14.3%	
6	EXISTING IMPROVEMENTS	1,000	14.3%	
7	TOTAL	11,000	100%	

Pacheco Koch
 ARCHITECTS
 1000 N. CENTRAL EXPRESSWAY, SUITE 1000
 DALLAS, TEXAS 75208
 TEL: 214-760-1200
 FAX: 214-760-1201
 WWW.PACHECO-KOCH.COM

**ASSISTED LIVING FACILITY
 HOSPITAL/MEDICAL FACILITIES
 CITY OF DALLAS TEXAS**

**LAKEWEST
 DETAILED DEVELOPMENT PLAN**

DATE: JULY 2012
 SCALE: 1"=50'
 SHEET: 1 OF 1

NOT FOR CONSTRUCTION

THIS PLAN IS A PRELIMINARY DEVELOPMENT PLAN AND IS NOT TO BE USED FOR CONSTRUCTION. THE CITY OF DALLAS HAS REVIEWED THIS PLAN AND HAS ISSUED THIS PERMIT UNDER THE PROVISIONS OF THE DALLAS HEALTH AND SAFETY CODE. THE CITY OF DALLAS DOES NOT WARRANT THE ACCURACY OF THIS PLAN OR THE INFORMATION CONTAINED HEREIN. THE CITY OF DALLAS IS NOT RESPONSIBLE FOR ANY ERRORS OR OMISSIONS IN THIS PLAN. THE CITY OF DALLAS IS NOT RESPONSIBLE FOR ANY DAMAGES, INCLUDING CONSEQUENTIAL DAMAGES, ARISING FROM THE USE OF THIS PLAN. THE CITY OF DALLAS IS NOT RESPONSIBLE FOR ANY DAMAGES, INCLUDING CONSEQUENTIAL DAMAGES, ARISING FROM THE USE OF THIS PLAN.

Planned Development
 District No. 508

CASE NUMBER Z112-242 (WF)

DATE: JULY 2012
 SCALE: 1"=50'
 SHEET: 1 OF 1

