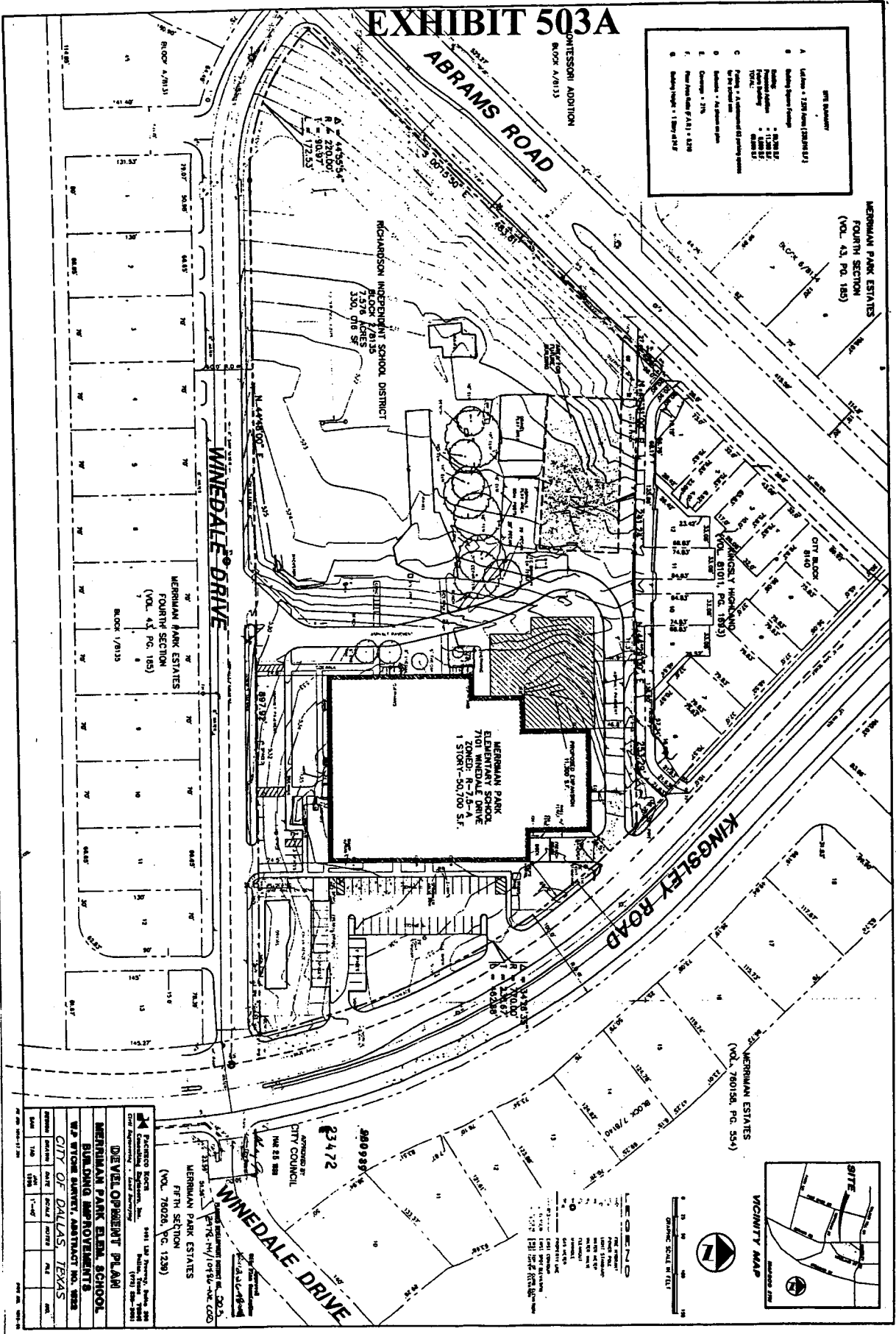
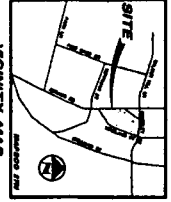


EXHIBIT 503A



- LEGEND**
- A. Lot Area - 1.281 Acres (54,948 S.F.)
 - B. Building Footprint - 11,200 S.F.
 - C. Parking - 11,200 S.F.
 - D. Other - 11,200 S.F.
 - E. Total - 33,600 S.F.
 - F. Net Area (P.A.S.) - 2,200 S.F.
 - G. Net Area (P.A.S.) - 2,200 S.F.
 - H. Net Area (P.A.S.) - 2,200 S.F.



DEVELOPMENT PLAN

MERRIMAN PARK ELEMENTARY SCHOOL

BUILDING MOVEMENTS

CITY OF DALLAS, TEXAS

NO.	DATE	BY	REVISION
1	11-14-67
2	11-14-67
3	11-14-67
4	11-14-67
5	11-14-67
6	11-14-67
7	11-14-67
8	11-14-67
9	11-14-67
10	11-14-67
11	11-14-67
12	11-14-67
13	11-14-67
14	11-14-67
15	11-14-67
16	11-14-67
17	11-14-67
18	11-14-67
19	11-14-67
20	11-14-67