

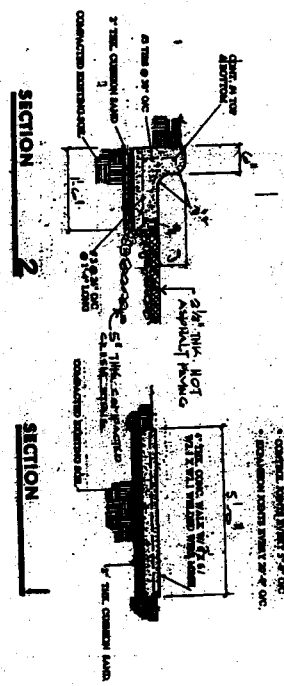
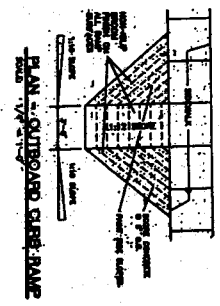
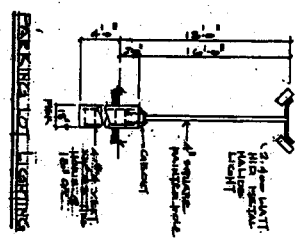
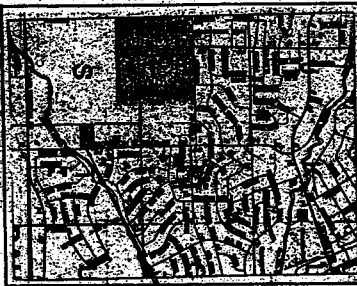
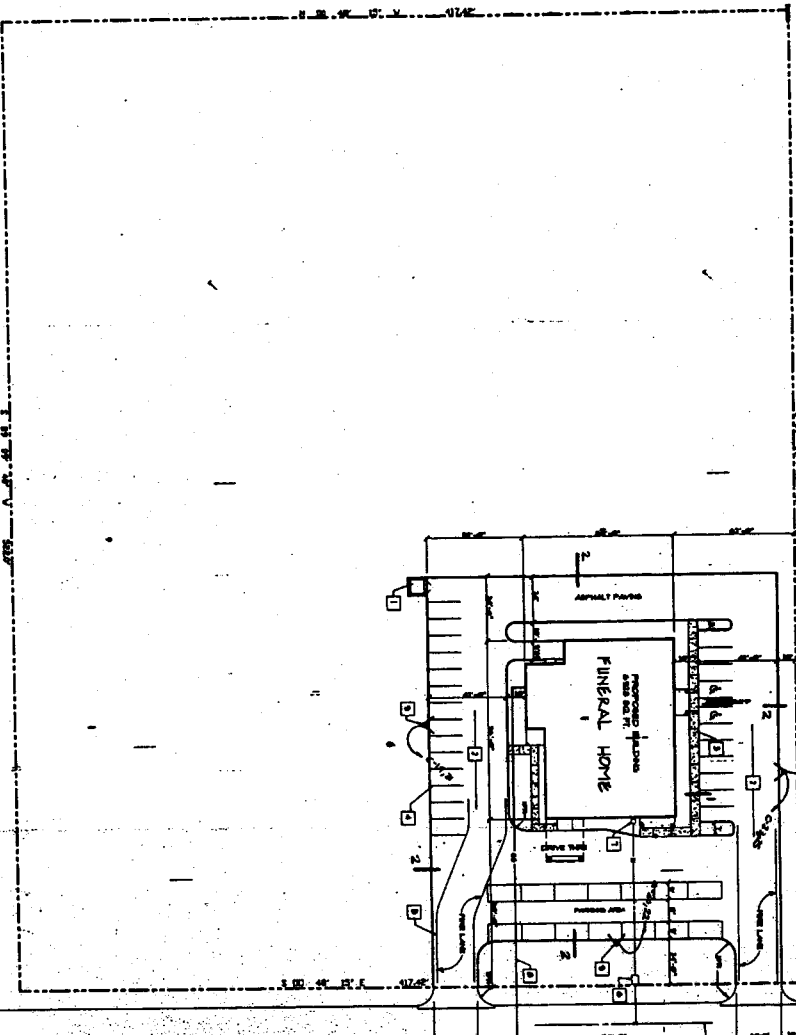
25423

032856

EXHIBIT 49B

NORTH
Scale: 1" = 100'

TRACT - IV PHASE - ONE DEVELOPMENT PLAN



- ### CONSTRUCTION NOTES
1. PROPOSED PAVEMENT ON 4" THICK CONCRETE WITH 3" OF 1/2" ON CENTER REINFORCING ON 4" CONCRETE AND 1" OF 1/2" ON CENTER REINFORCING ON 4" CONCRETE AND 1" OF 1/2" ON CENTER REINFORCING ON 4" CONCRETE.
 2. 3" THICK HOT ASPHALT PAVEMENT ON 4" THICK CONCRETE.
 3. 4" THICK HOT ASPHALT PAVEMENT ON 4" THICK CONCRETE.
 4. 4" THICK HOT ASPHALT PAVEMENT ON 4" THICK CONCRETE.
 5. 4" THICK HOT ASPHALT PAVEMENT ON 4" THICK CONCRETE.
 6. 4" THICK HOT ASPHALT PAVEMENT ON 4" THICK CONCRETE.
 7. 4" THICK HOT ASPHALT PAVEMENT ON 4" THICK CONCRETE.
 8. 4" THICK HOT ASPHALT PAVEMENT ON 4" THICK CONCRETE.
 9. 4" THICK HOT ASPHALT PAVEMENT ON 4" THICK CONCRETE.
 10. 4" THICK HOT ASPHALT PAVEMENT ON 4" THICK CONCRETE.

960481
22663
APPROVED BY
CITY COUNCIL
JUN 24 1978

OWNER ACE THREE, INC. MR. EDWARD JONES, JR. 25044 ELLEN MANOR DR. DALLAS, TEXAS 75287 (214) 817-1875	PREPARED BY JOHN TAYLOR & ASSOCIATES 1401 WEST WILSON ROAD, SUITE 201 DALLAS, TEXAS 75244 (214) 446-3244	LEGAL BLOCK 12, LOT 10, OF 20 DALLAS COUNTY TRACT DALLAS COUNTY TRACT DALLAS COUNTY TRACT DALLAS COUNTY TRACT	PARKING REQUIREMENT: 10 PROVIDED: 10	FLOOD ZONE THIS PROPERTY DOES NOT LIE WITHIN AN AREA FLOOD ZONE "A"	LOT 12-10-10 PD NO. 48
--	---	---	---	--	-------------------------------

PLANNING DEPARTMENT REPORT NO. 48
3/25/78, 1/14/79, 2/13/78

NO. 14 96048
SUBJECT NO. **A1** OF 14
DATE: 10-10-78

PROPOSED FUNERAL HOME
FOR
ACE THREE, INC
HOUSTON SCHOOL ROAD
DALLAS, TEXAS

JOHN TAYLOR & ASSOCIATES
1401 WEST WILSON ROAD, SUITE 201
DALLAS, TEXAS 75244
(214) 446-3244

REVISIONS
1. 12-1-78