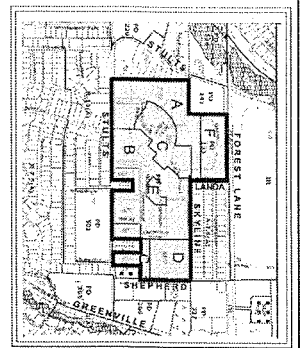
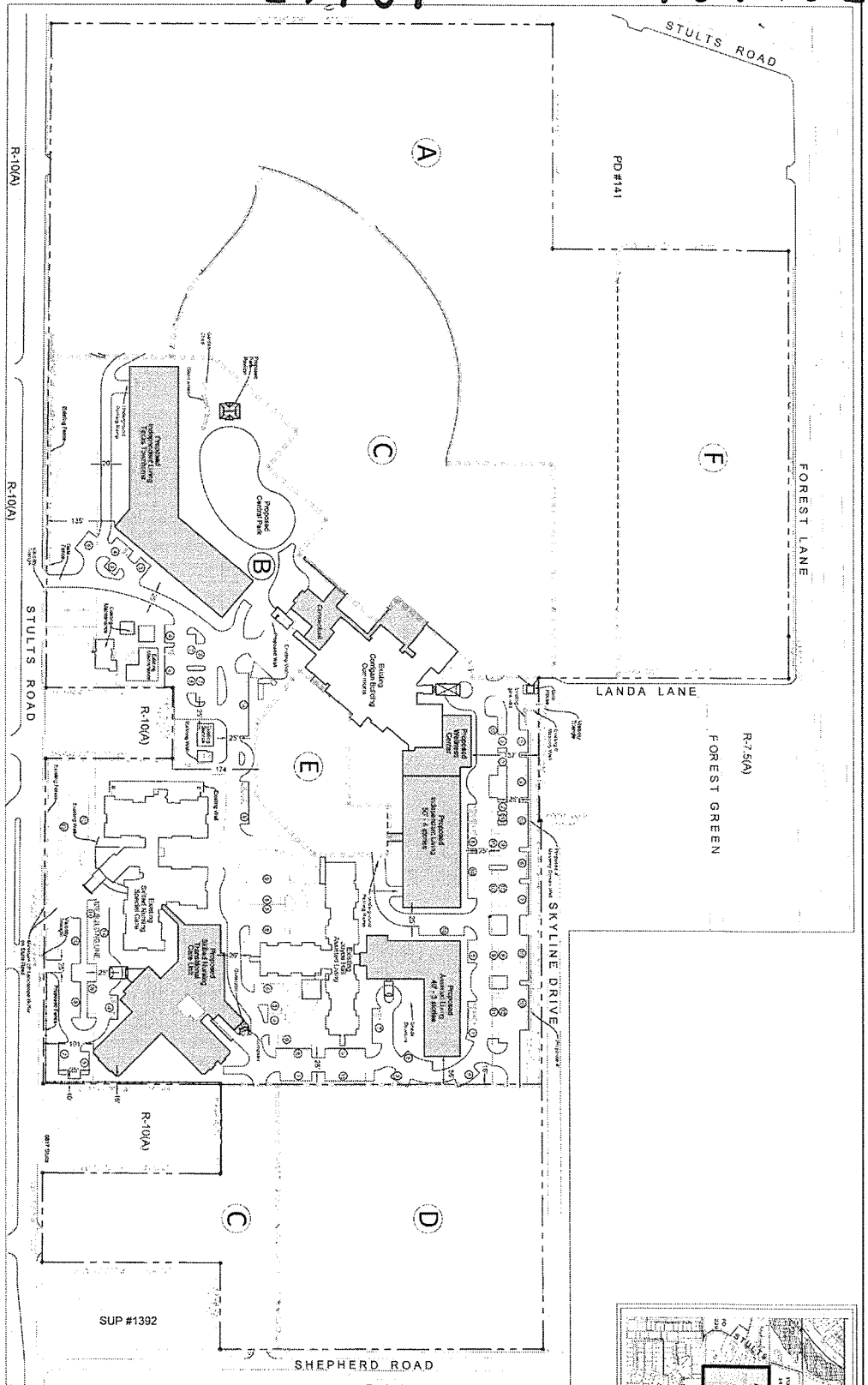


29757

151082

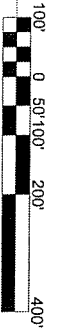


Number of Units/ Beds by Building Type/	Subarea A	Subarea B	Future	Future	Future	Future
Proposed Office Building	38 units	n/a				
Proposed Single-Family Residential Building	8 units	n/a				
Proposed Multi-Family Units	n/a	104 units				
Proposed Child and Nursing Care	n/a	255 beds				
Total dwelling units and beds per PD development plan	1,032					

- USES:**
- APARTMENT RETIREMENT HOUSING - 104 UNITS
 - CONVELESCENCE AND NURSING CARE - 255 BEDS
 - ADULT DAY CARE - 7,500 SQ. FT.
 - ADMINISTRATIVE, DINING, HEALTH OFFICES, ETC. - 1,500 SQ. FT.
 - RECREATIONAL - 1,500 SQ. FT.
 - MAINTENANCE - 8,000 SQ. FT.
- HEIGHT: 35**



DEVELOPMENT PLAN
SCALE: 1" = 100'-0"



Development Plan, Subarea B

Exhibit 456D
PDD No. 456

Approved
City Plan Commission
May 7, 2015

SKYLENE DRIVE
DALLAS, TEXAS

Baldwin
Associates

BALDWIN ASSOCIATES

3904 Elm Street, Suite B
Dallas, Texas 75226
MOBILE: 214.729.7949
OFFICE: 214.824.7949
rob@baldwinplanning.com

04/16/15

PROJECT NUMBER

CASE NUMBER

2145-168 (WSD)