

25423

03285

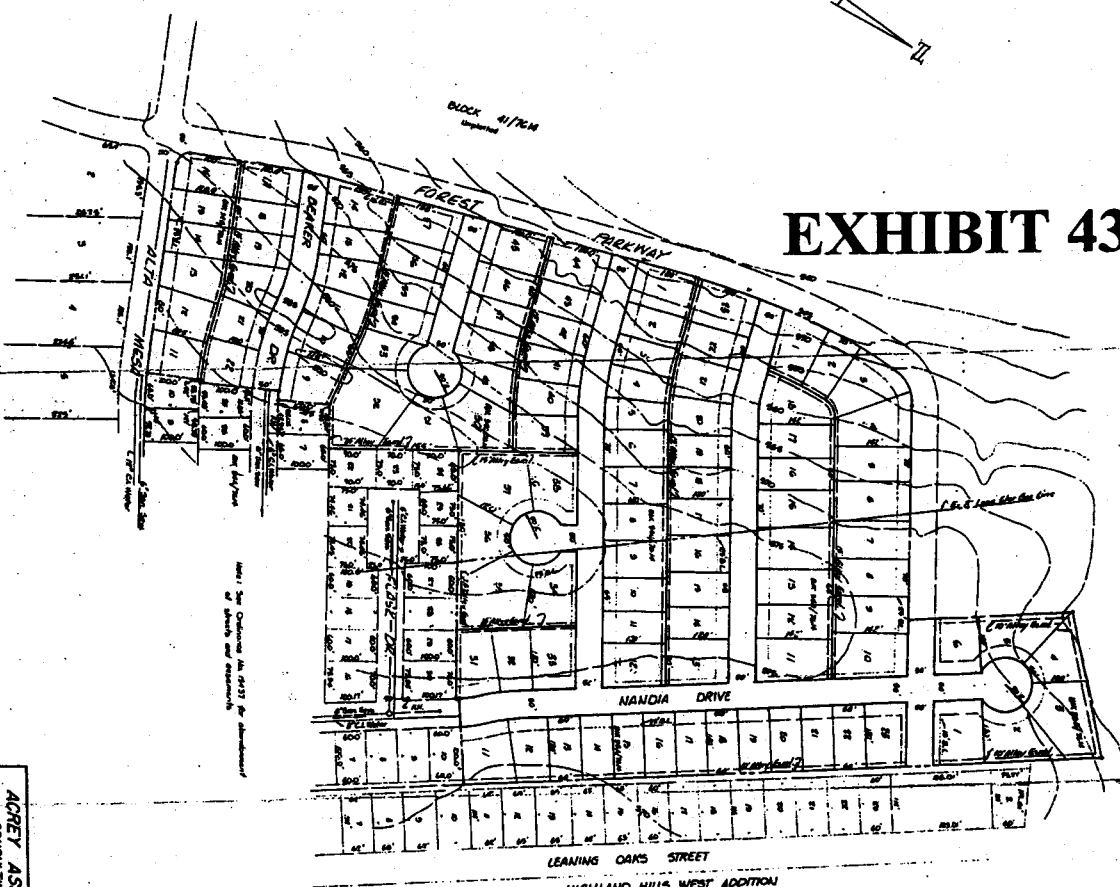
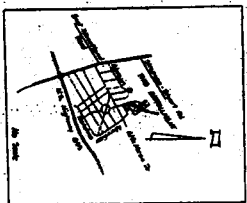


EXHIBIT 43A

ACREY ASSOCIATES, INC. CONSULTING ENGINEERS 10000 N. CENTRAL EXPRESSWAY DALLAS, TEXAS 75243		PRELIMINARY PLAT HIGHLAND HILLS WEST ADDITION, LOTS 2 DALLAS, TEXAS	
DATE	SCALE	DATE	SCALE
11/17/02	AS SHOWN	11/17/02	AS SHOWN

ZONING DISTRICT 210-172/182-2

75345

FOR TOTAL LOTS
OF 1000 AND SETBACK
AS SHOWN

APPROVED BY
CITY COUNCIL
MAY 20 2003

75345

PLANNED DEVELOPMENT DISTRICT NO. 49

RETRAKEN, INC. - DEVELOPERS
10000 N. CENTRAL EXPRESSWAY
DALLAS, TEXAS 75243

10000 N. CENTRAL EXPRESSWAY
DALLAS, TEXAS 75243

APPROVED BY
CITY COUNCIL
MAY 20 2003

Michael B. Hancock
CITY CLERK