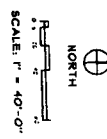
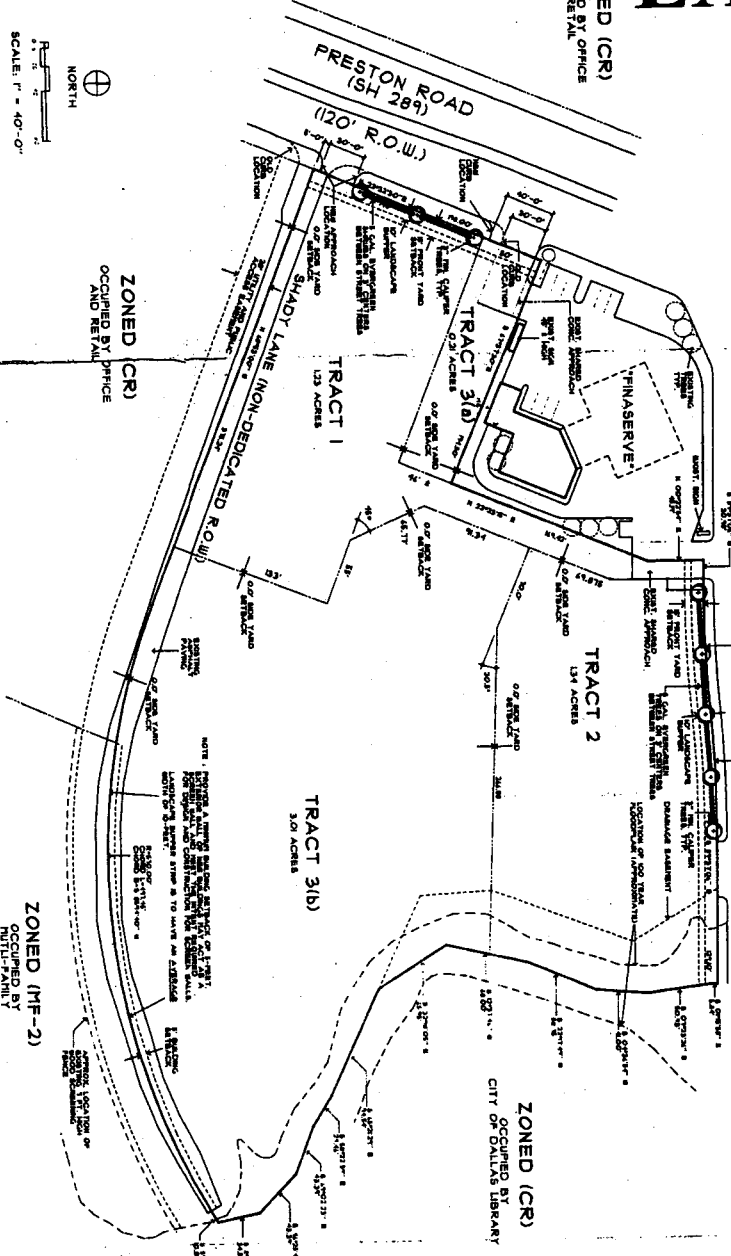


# EXHIBIT 425A

ZONED (PD-428)  
(VACANT)

FRANKFORD ROAD  
(R.O.W. VARIES)

ZONED (CR)  
OCCUPIED BY OFFICE  
AND RETAIL



PREPARED FOR:  
CITY OF DALLAS  
PLANNING DEPT.  
800 MARILLA STREET  
DALLAS, TEXAS 75201  
D01148-4152

PREPARED BY:  
ROBERT GOVA ARCHITECTS, INC.  
SUITE 123 TEXAS 75201  
D41126-4885

SITE CONCEPT PLAN FOR  
PLANNED DEVELOPMENT DISTRICT  
SOUTH-EAST CORNER OF  
FRANKFORD AND PRESTON

REVISION	DATE
1	05/02/78
2	08/02/78
3	09/11/78

OWNER:  
TDC PRESTON INC.  
1450 DALLAS PARKWAY  
SUITE 100 TEXAS 75214  
D41132-0000  
2482-2491-9444

DEVELOPER:  
SAPPHIRE PROPERTIES  
5418 PRESTON ROAD  
DALLAS, TEXAS 75225  
D41133-0185

APPROVED BY  
CITY COUNCIL  
952852  
22526  
DATE 11/11/78

**NOTICE:** THESE PLANS AND SPECIFICATIONS SHALL BE AS PER CITY ORDINANCES AND APPLICABLE REGULATIONS. THE CITY ENGINEER HAS REVIEWED THESE PLANS AND SPECIFICATIONS FOR CONFORMANCE WITH THE CITY ENGINEERING DEPARTMENT STANDARDS AND SPECIFICATIONS. THE CITY ENGINEER'S REVIEW IS LIMITED TO TECHNICAL ASPECTS AND DOES NOT CONSTITUTE A GUARANTEE OF THE ACCURACY OF THE INFORMATION PROVIDED HEREON. THE ENGINEER'S REVIEW IS LIMITED TO THE TECHNICAL ASPECTS OF THE PLANS AND SPECIFICATIONS AND DOES NOT CONSTITUTE A GUARANTEE OF THE ACCURACY OF THE INFORMATION PROVIDED HEREON.

**TRACT 1**  
Zoning: Planning Development District (PDD)  
PLANNED DEVELOPMENT DISTRICT (PDD)  
PLANNED USE: COMMERCIAL, OFFICE  
PLANNED HEIGHT: 35 FT. + SIGNAGE  
PLANNED LOT: 1.23 ACRES  
PLANNED LOT: 1.23 ACRES  
PLANNED LOT: 1.23 ACRES  
PLANNED LOT: 1.23 ACRES

**TRACT 2**  
Zoning: Planning Development District (PDD)  
PLANNED DEVELOPMENT DISTRICT (PDD)  
PLANNED USE: COMMERCIAL, OFFICE  
PLANNED HEIGHT: 35 FT. + SIGNAGE  
PLANNED LOT: 1.24 ACRES  
PLANNED LOT: 1.24 ACRES  
PLANNED LOT: 1.24 ACRES  
PLANNED LOT: 1.24 ACRES

**TRACT 3(a)**  
Zoning: Planning Development District (PDD)  
PLANNED DEVELOPMENT DISTRICT (PDD)  
PLANNED USE: COMMERCIAL, OFFICE  
PLANNED HEIGHT: 35 FT. + SIGNAGE  
PLANNED LOT: 0.23 ACRES  
PLANNED LOT: 0.23 ACRES  
PLANNED LOT: 0.23 ACRES  
PLANNED LOT: 0.23 ACRES

**TRACT 3(b)**  
Zoning: Planning Development District (PDD)  
PLANNED DEVELOPMENT DISTRICT (PDD)  
PLANNED USE: COMMERCIAL, OFFICE  
PLANNED HEIGHT: 35 FT. + SIGNAGE  
PLANNED LOT: 3.01 ACRES  
PLANNED LOT: 3.01 ACRES  
PLANNED LOT: 3.01 ACRES  
PLANNED LOT: 3.01 ACRES

### LAND USE

TRACT 1  
TRACT 2  
TRACT 3(a)  
TRACT 3(b)