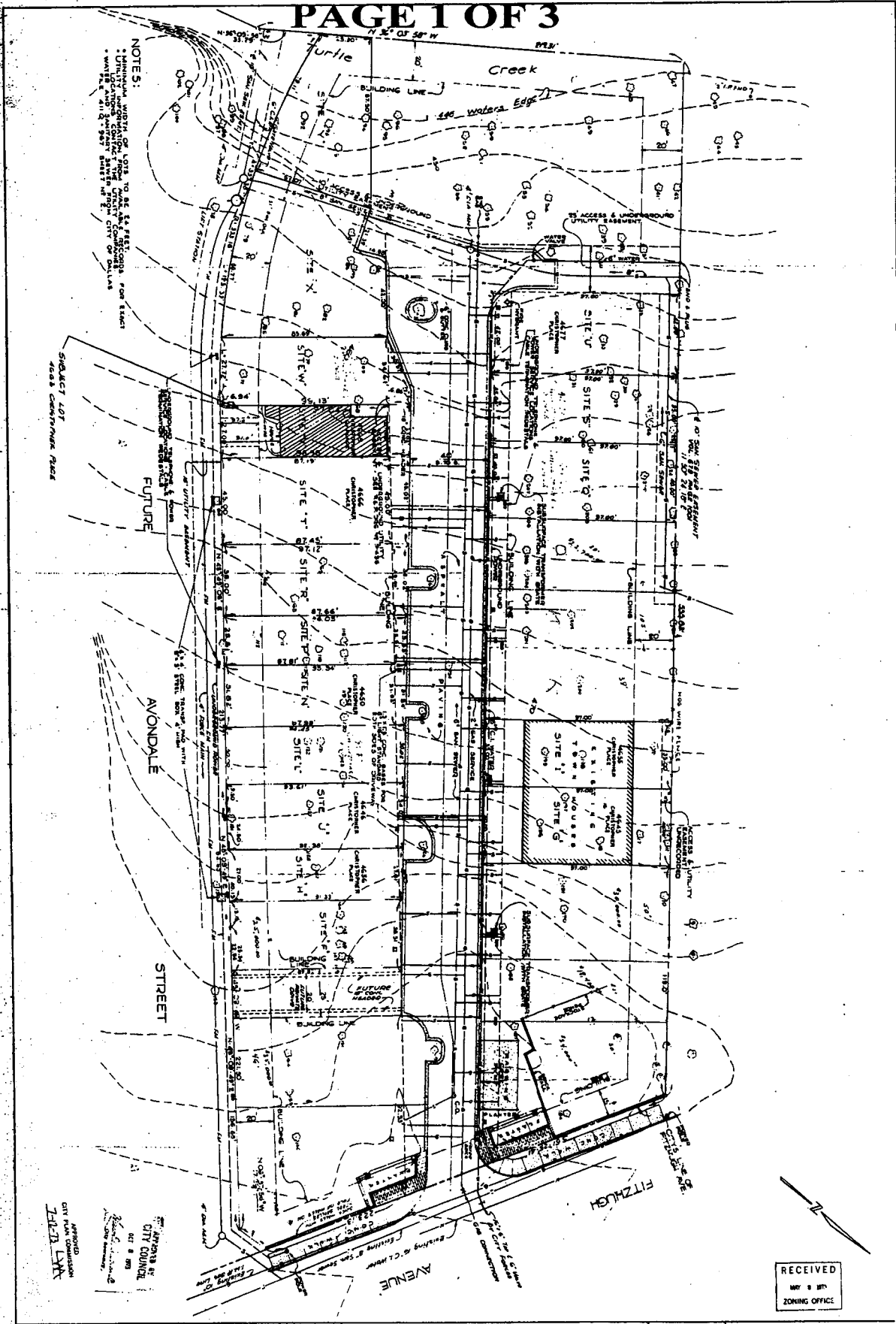


25423
EXHIBIT 21A
PAGE 1 OF 3

032856



NOTE 5:
 MINIMUM WIDTH OF LOT IS TO BE 54 FEET.
 ALL LOTS TO BE 100 FEET WIDE.
 ALL LOTS TO BE 100 FEET DEEP.
 ALL LOTS TO BE 100 FEET WIDE.
 ALL LOTS TO BE 100 FEET DEEP.

SUBJECT LOT
 4008 CHRISTOPHER PLACE

FUTURE

AVONDALE

STREET

FITZHUGH

AVENUE

APPROVED
 CITY PLANNING COMMISSION
 7-17-23 LMK

APPROVED BY
 CITY COUNCIL
 7-17-23 LMK

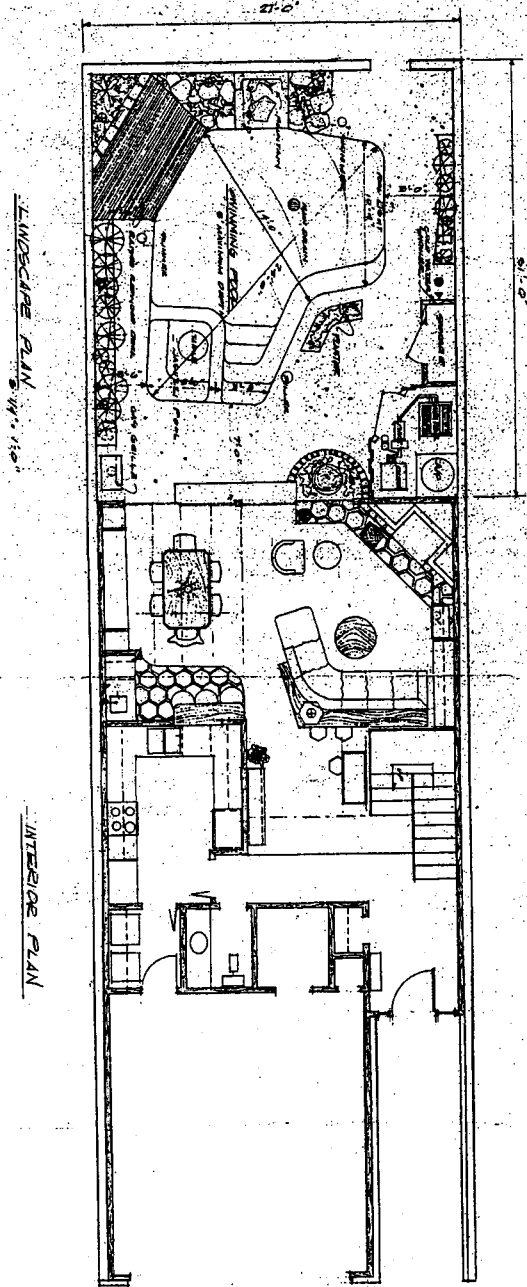
SITE PLAN
 OF
CHRISTOPHER PLACE
 CITY BLOCK NO. 72022
 DALLAS, TEXAS

CORDELL & ASSOCIATES, INC.
 consulting engineers
 4830 Walnut Hill Lane, Suite 201
 Dallas, Texas 75229
 (214) 392-0082

RECEIVED
 MAY 8 2023
 ZONING OFFICE

4/28/23 Approved by City Council & Planning Commission
 4/28/23 Approved by City Council & Planning Commission
 4/28/23 Approved by City Council & Planning Commission

EXHIBIT 21A PAGE 3 OF 3



APPROVED BY
CITY COUNCIL
OCT 9 1972

APPROVED
CITY PLANNING COMMISSION
JAN 13 1973

DATE
APRIL 4, 1972

INTERIOR DESIGN & LANDSCAPE PLAN
FOR
MR. ROBERT C. WYNN

DESIGN BY Parker C. Folse Jr.

RECEIVED
MAY 9 1973
ZONING OFFICE