



Exhibit 174 A

26296

TXU
PHASE 1

Total Site Area	2,377 AC
Phase 1	1,000 AC
Phase 2	1,377 AC

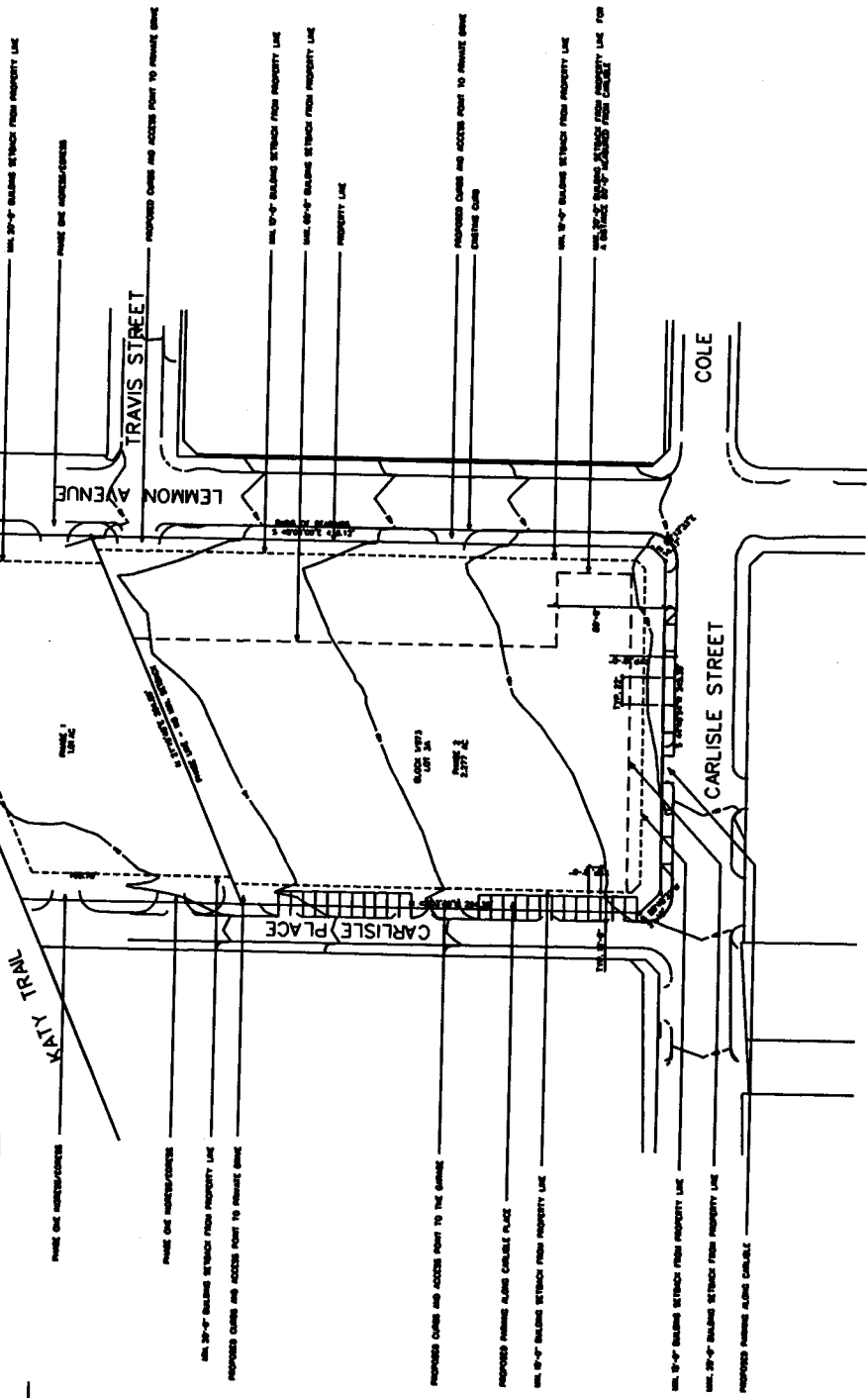
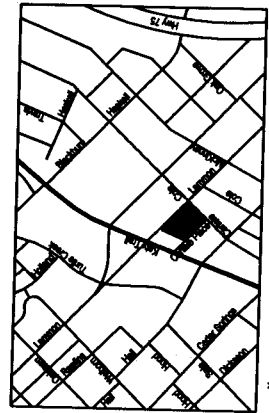


Project Number	2045
Drawn By	08/22/2005
Project	

Item	Item No.	Date
Approved	2045	08/22/2005
Approved	08/22/2005	08/22/2005
Approved	08/22/2005	08/22/2005

A001

AREA	PHASE 1	PHASE 2
AREA	1,000 AC	1,377 AC
STATUS	APPROX TO CONCEPTUAL PLAN	APPROX TO CONCEPTUAL PLAN
MAX BUILDING HEIGHT	5.5	5.5
MAX FLOOR AREA	5,000 SF PER RESIDENTIAL UNIT	5,000 SF PER RESIDENTIAL UNIT
HEIGHT	50 FT	50 FT
STORIES	7	7
MAX LOT COVERAGE	50%	50%
SETBACKS	MIN. UNOBSTRUCTED WIDTH: 10'-0"	MIN. UNOBSTRUCTED WIDTH: 10'-0"



Zoning File No. Z045-296(RB)

Conceptual Plan  
Scale: 1" = 40'-0"



Planned Development  
District  
No. 174

Approved  
City Plan Commission  
February 23, 2006