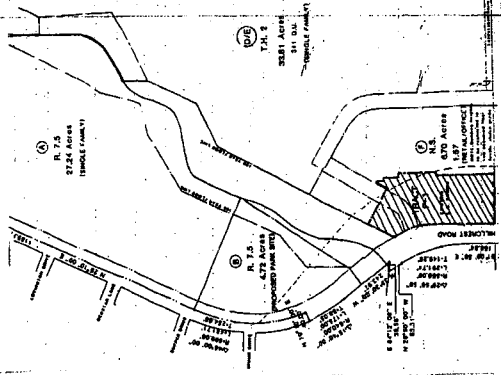


25508 EXHIBIT 173D

040781



DEVELOPMENT PLAN PD-173 TRACT F-1

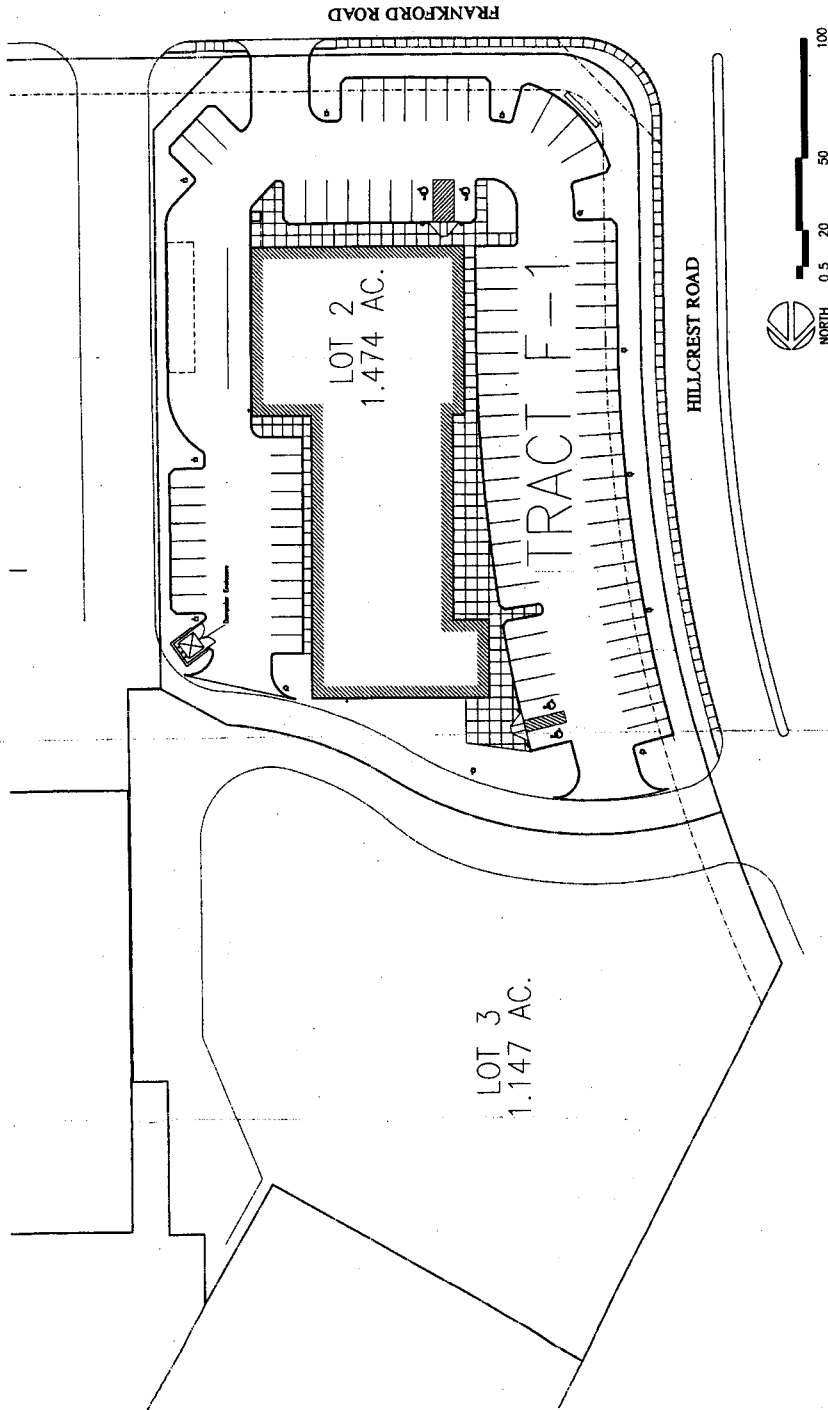
SITE IMPLICATIONS
 BUILDING AREA, LOT 2: 14,028 SF.
 SITE AREA: 1.47 ACRES ±
 PARKING IMPLICATIONS:
 PARKING AVAILABLE: 100 SPACES (50) (50)
 STANDARD ACCESSIBLE: 10 SPACES (5)
 STANDARD SPACES: 100 SPACES (50) (50)
 TOTAL PARKING PROVIDED: 107

973089
 23276
 CITY COUNCIL
 SEP 24 1987

PERMITS REQUIRED:
 AS PER CHAPTER 51 OF DALLAS DEVELOPMENT CODE
 CITY COUNCIL
 PLANNING DEPT. REVIEW & SIGN RESTRICTION 24 MONTHS
 PLANNING DEPT. REVIEW & SIGN RESTRICTION 24 MONTHS

PARKING SPACES:
 RETAIL: 100
 OFFICE: 100
 OFFICE: 100
 HEALTH: 100

PLANNED DEVELOPMENT NUMBER: 173
 2547-254 (0507-12111)



GOOD FULTON & FARRELL ARCHITECTS
 1000 West Loop West, Suite 1000, Dallas, Texas 75208
 Phone: 754-2211
 Fax: 754-2211

Granite Chief Realty

6911 Frankford Crest
 Dallas, Texas