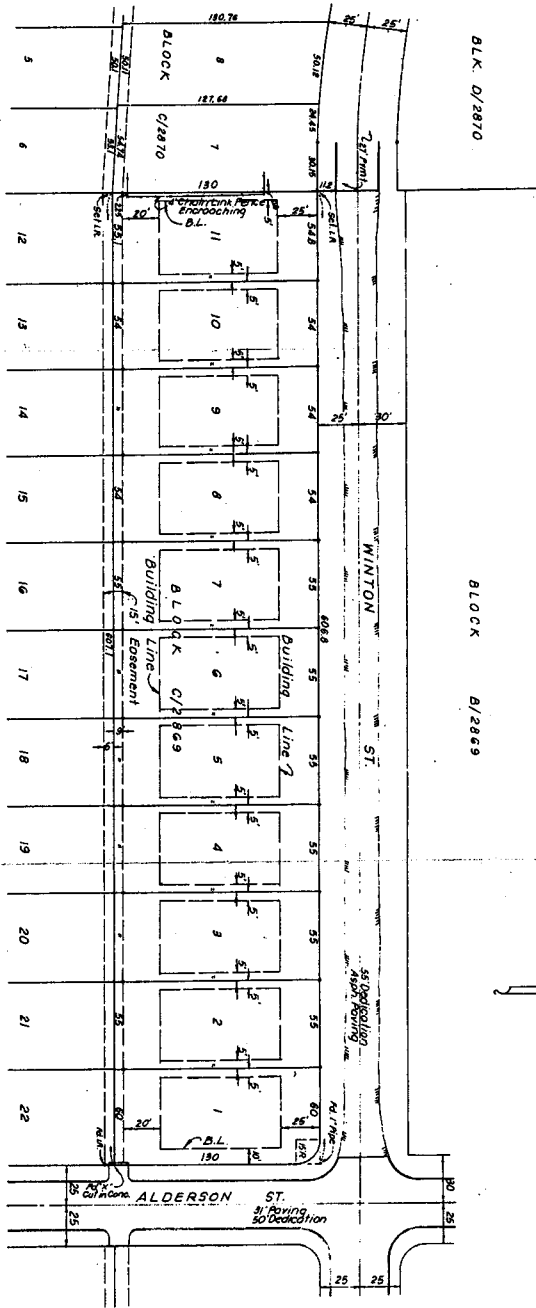


EXHIBIT 158A



APPROVED
CITY PLAN COMMISSION
A. Kober & Co.
2823-27th/31WCE
PD # 158

APPROVED BY
CITY COUNCIL
OCT 26 1966
[Signature]
18031
833547

SITE PLAT		
LOTS 1 THRU 22, BLOCK C/2869		
BEL-AIR ADDITION		
DALLAS, TEXAS		
DAVID HODGE	SCALE	OWNER
Camphill Engineering Inc.	1" = 40'	
112 S. Modison Avenue	DATE	
Dallas, Texas 75208	6-6-63	