

EXHIBIT 148C

PD-143 (O-2-D)
EXISTING OFFICE

LANDSCAPE PLAN B

SCALE 1"=20'-0"
ALL OF LOTS 7-10 & 17-20, PART OF
LOTS 6 & 16, BLOCK 9/1015
OAK LAWN PLACE ADDITION PD-148
CITY OF DALLAS, DALLAS COUNTY, TEXAS

DEVELOPER:
M. MYERS DEVELOPMENT INC.
3100 MCKINNON ST.
SUITE 1060
DALLAS, TX 75201
(214) 964-1328

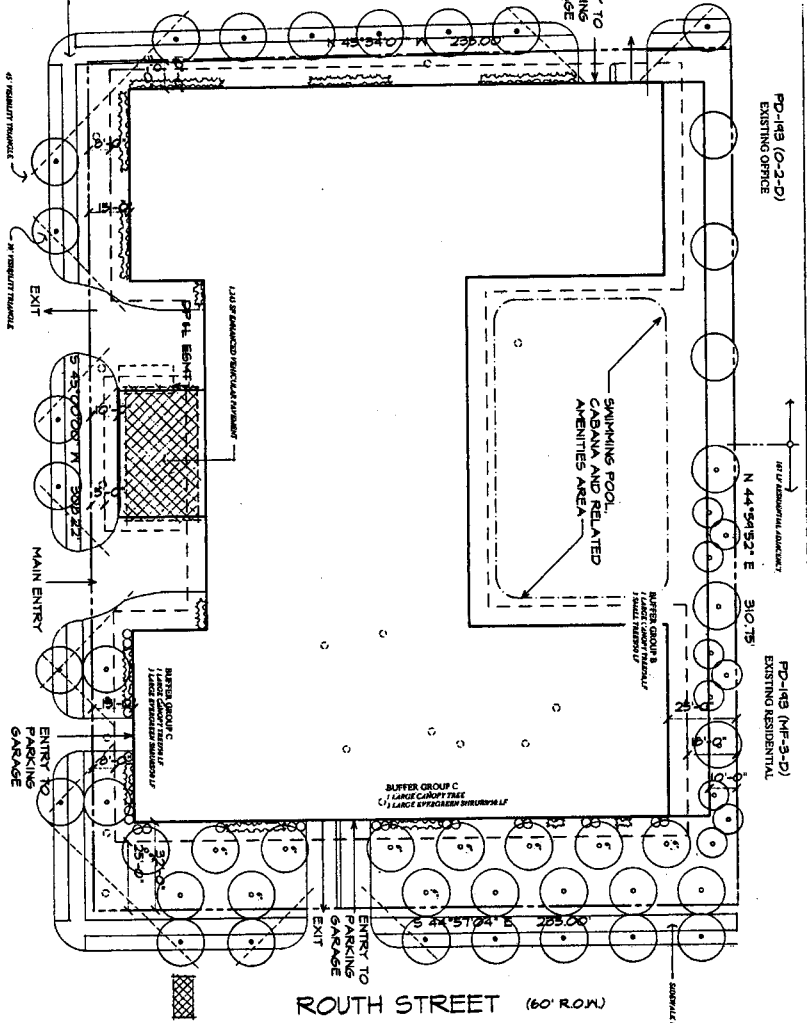
OWNER:
HARVEY H. CONGER TRUST #2
C/O CENTEX REALTIES, INC.
1845 WOODALL RODGERS FREEWAY
SUITE 1200
DALLAS, TX 75201
(214) 954-8003

PD-143 (O-2-D)
EXISTING OFFICE

END STREET (60' ROW)

FAIRMOUNT STREET (50' ROW)

ROUTH STREET (60' ROW)

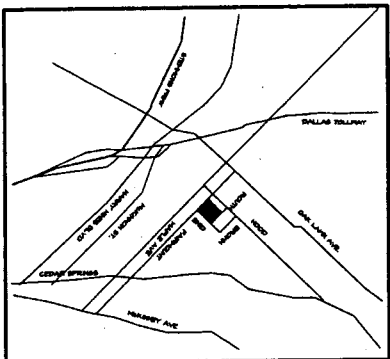


- GENERAL LANDSCAPE NOTES**
1. All plantings shall be installed in accordance with the City of Dallas Planting Manual.
 2. All plantings shall be installed in accordance with the City of Dallas Planting Manual.
 3. All plantings shall be installed in accordance with the City of Dallas Planting Manual.
 4. All plantings shall be installed in accordance with the City of Dallas Planting Manual.
 5. All plantings shall be installed in accordance with the City of Dallas Planting Manual.
 6. All plantings shall be installed in accordance with the City of Dallas Planting Manual.
 7. All plantings shall be installed in accordance with the City of Dallas Planting Manual.
 8. All plantings shall be installed in accordance with the City of Dallas Planting Manual.
 9. All plantings shall be installed in accordance with the City of Dallas Planting Manual.
 10. All plantings shall be installed in accordance with the City of Dallas Planting Manual.

- PARTIAL PLANT LIST**
- | Plant Name | Quantity | Notes |
|------------|----------|-------|
| ... | ... | ... |
| ... | ... | ... |
| ... | ... | ... |

PD-143 (MF-3-D)
EXISTING RESIDENTIAL

VICINITY MAP



NOTE: ANY PROTECTED TREES ON THIS SITE TO BE REMOVED SHALL BE REPLANTED ON A 1:1 BASIS WITHIN THE SAME QUARTER SECTION.

COMPLIANCE WITH DESIGN STANDARDS

Item	Requirement	Compliance
1
2
3
4
5
6
7
8
9
10
11
12
13
14
15
16
17
18
19
20

978108
23285
CITY COUNCIL
SER 24 187

APPROVED BY
CITY COUNCIL
SER 24 187

1040 Guadalupe, Suite 200
DALLAS, TX 75203
(214) 973-2013

DP.2

Womack+Hampton
Architectural Joint Venture

ROUTH STREET MID-RISE
FOR
M. MYERS DEVELOPMENT, INC.



Copyright © 2013
All Rights Reserved
Project No. 48031
Date of Issue: 07/11/13
Author: J. S. HART
Designer: J. S. HART
Checker: J. S. HART
Printer: J. S. HART