

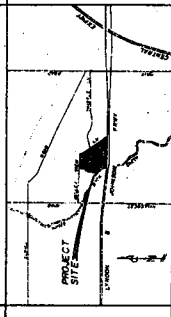
EXHIBIT 143B

GENERAL NOTES:

1. THIS PLAN IS A PRELIMINARY PLAN AND IS SUBJECT TO THE APPROVAL OF THE CITY ENGINEER AND THE STATE ENGINEER.
2. THE PROPOSED DEVELOPMENT IS SUBJECT TO THE APPROVAL OF THE CITY ENGINEER AND THE STATE ENGINEER.
3. THE PROPOSED DEVELOPMENT IS SUBJECT TO THE APPROVAL OF THE CITY ENGINEER AND THE STATE ENGINEER.
4. THE PROPOSED DEVELOPMENT IS SUBJECT TO THE APPROVAL OF THE CITY ENGINEER AND THE STATE ENGINEER.
5. THE PROPOSED DEVELOPMENT IS SUBJECT TO THE APPROVAL OF THE CITY ENGINEER AND THE STATE ENGINEER.
6. THE PROPOSED DEVELOPMENT IS SUBJECT TO THE APPROVAL OF THE CITY ENGINEER AND THE STATE ENGINEER.
7. THE PROPOSED DEVELOPMENT IS SUBJECT TO THE APPROVAL OF THE CITY ENGINEER AND THE STATE ENGINEER.
8. THE PROPOSED DEVELOPMENT IS SUBJECT TO THE APPROVAL OF THE CITY ENGINEER AND THE STATE ENGINEER.
9. THE PROPOSED DEVELOPMENT IS SUBJECT TO THE APPROVAL OF THE CITY ENGINEER AND THE STATE ENGINEER.
10. THE PROPOSED DEVELOPMENT IS SUBJECT TO THE APPROVAL OF THE CITY ENGINEER AND THE STATE ENGINEER.

GENERAL NOTES:

1. THIS PLAN IS A PRELIMINARY PLAN AND IS SUBJECT TO THE APPROVAL OF THE CITY ENGINEER AND THE STATE ENGINEER.
2. THE PROPOSED DEVELOPMENT IS SUBJECT TO THE APPROVAL OF THE CITY ENGINEER AND THE STATE ENGINEER.
3. THE PROPOSED DEVELOPMENT IS SUBJECT TO THE APPROVAL OF THE CITY ENGINEER AND THE STATE ENGINEER.
4. THE PROPOSED DEVELOPMENT IS SUBJECT TO THE APPROVAL OF THE CITY ENGINEER AND THE STATE ENGINEER.
5. THE PROPOSED DEVELOPMENT IS SUBJECT TO THE APPROVAL OF THE CITY ENGINEER AND THE STATE ENGINEER.
6. THE PROPOSED DEVELOPMENT IS SUBJECT TO THE APPROVAL OF THE CITY ENGINEER AND THE STATE ENGINEER.
7. THE PROPOSED DEVELOPMENT IS SUBJECT TO THE APPROVAL OF THE CITY ENGINEER AND THE STATE ENGINEER.
8. THE PROPOSED DEVELOPMENT IS SUBJECT TO THE APPROVAL OF THE CITY ENGINEER AND THE STATE ENGINEER.
9. THE PROPOSED DEVELOPMENT IS SUBJECT TO THE APPROVAL OF THE CITY ENGINEER AND THE STATE ENGINEER.
10. THE PROPOSED DEVELOPMENT IS SUBJECT TO THE APPROVAL OF THE CITY ENGINEER AND THE STATE ENGINEER.

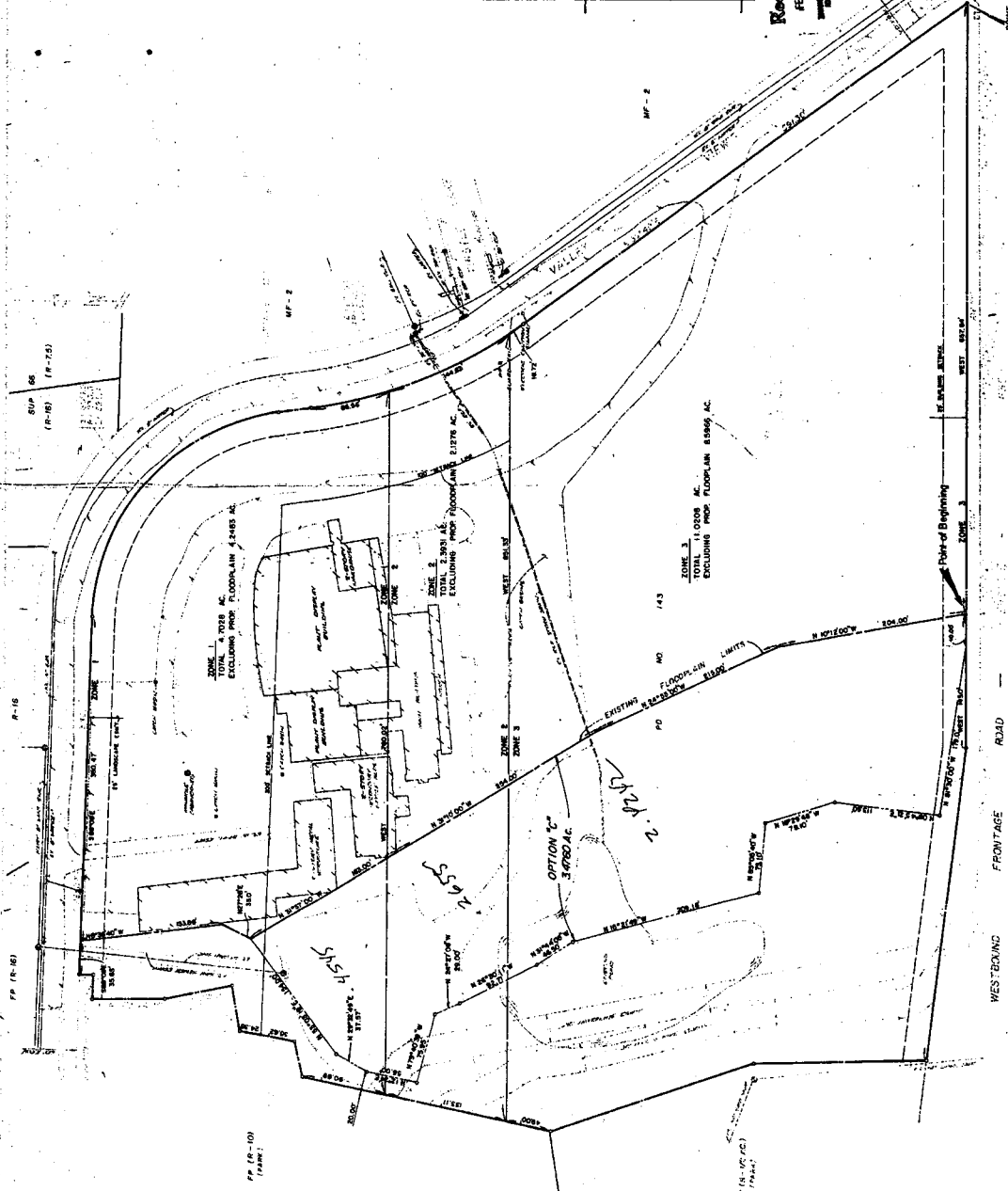


LOCATION MAP
 870695
 19483 CITY COUNCIL

PROJECT NO. 2856-167/2723-M
 DATE: 10/2/2008

LAMBERT TRACT SITE PLAN
 NATHAN D. MAIER
 CONSULTING ENGINEERS, INC.
 THREE JONATHAN/BIRD N. CENTRAL EXPRESSWAY, SUITE 200
 DALLAS, TEXAS 75201
 PHONE: (214) 759-9741

DATE: 10/2/2008
 SCALE: AS SHOWN



Received
 10/2/2008
 10:00 AM

POINT OF BEGINNING
 DESCRIPTION