

# EXHIBIT 125A

### BOUNDARY SURVEY

STATE OF TEXAS  
COUNTY OF DALLAS

Whereas, Walter Industries Ltd., is the Owner of a tract of land in the County of Dallas, Texas, and the same is more particularly described in the plat of the Dallas Block No. 543 and being more particularly described as follows:

BEING the 10 acre tract in the Southern right-of-way line of Park Lane (100 feet wide street at this point) said point being the Northeast corner of the 10 acre tract in the Dallas Block No. 543 and being more particularly described as follows:

THENCE S 89°24'00" E along said Southern right-of-way line, a distance of 435.93 feet to a point for corner;

THENCE S 89°24'00" E along said Southern right-of-way line, a distance of 435.93 feet to a point for corner;

THENCE S 89°24'00" W, a distance of 685.17 feet to a point for corner;

THENCE S 89°24'00" E, a distance of 685.17 feet to a point for corner;

THENCE S 89°24'00" E, along the South line of said 10.00 acre tract, a distance of 196.95 feet to a point for corner;

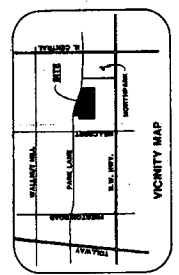
THENCE S 89°24'00" E, along the East line of said 10.00 acre tract, a distance of 334.47 feet to the POINT OF BEGINNING;

CONTAINING 1,307,145.19 square feet or 30,000 acres of land.

APPROVED BY  
CITY COUNCIL  
JAN 28 1981

16841  
918912

Approved  
by the  
City Council  
on  
1/28/81  
Page 1 of 1



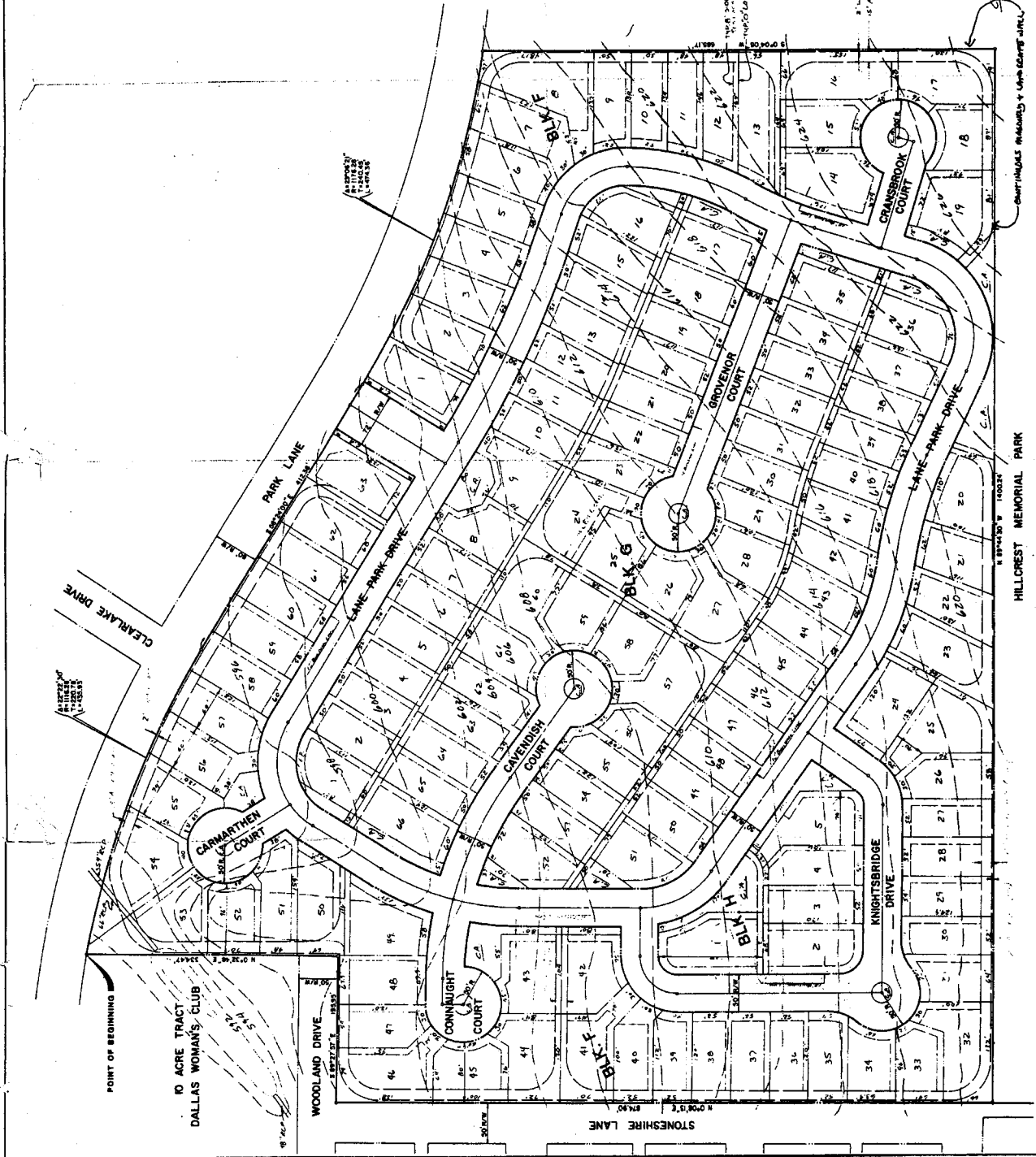
PRELIMINARY PLAT  
LANE PARK  
DALLAS, TEXAS

DEVELOPER:  
RAYMOND D. NASHNER CO.  
P.O. BOX 13708  
DALLAS, TEXAS 75211 TEL. 388-1324

Consulting Engineers & Planners  
Graham Associates, Inc.  
1000 Ross Avenue  
Dallas, Texas 75202



Scale: 1" = 60'



POINT OF BEGINNING  
10 ACRE TRACT  
DALLAS WOMAN'S CLUB

HILLCREST MEMORIAL PARK

Scale: 1" = 60'

Scale: Common AREA