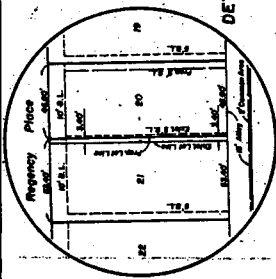


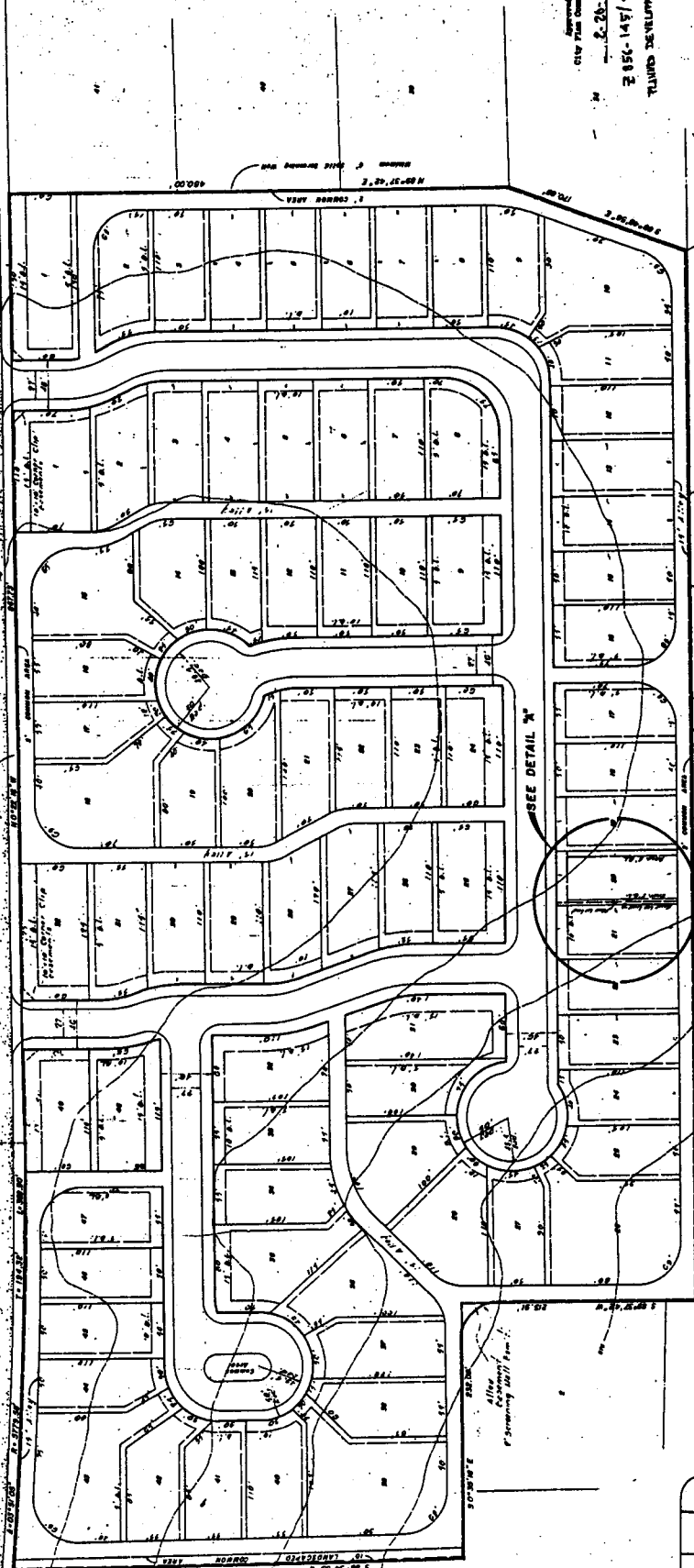
# EXHIBIT 107A

**SITE DATA**  
 total area ..... 15.94 ac.  
 total units ..... 81  
 density ..... 50 units/ac.



ROAD

PRESTON



Approved  
 City Planning Commission  
 2-20-81  
 2154-1457/4299-N  
 PLANNED DEVELOPMENT DISTRICT 4 (P)

**A Planned Development**  
 Amendment  
 Lots 20 & 21 Block 88 SITE  
 EDWARD WING COMPANY TRACT 1983  
 CITY BLOCK NO. 8175  
 DALLAS, DALLAS COUNTY, TEXAS

DEVELOPER  
 EDWARD WING COMPANY  
 1000 W. WINDYBROOK  
 DALLAS, TEXAS 75214

APPROVED BY  
 CITY COUNCIL  
 MAR 10 1981  
 860921  
 19090

WILLIAMSBURG AT PRESTON SUBDIVISION

