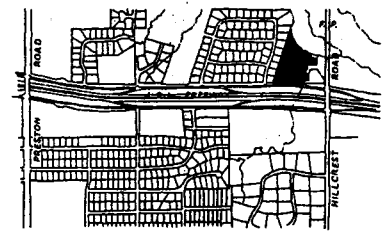
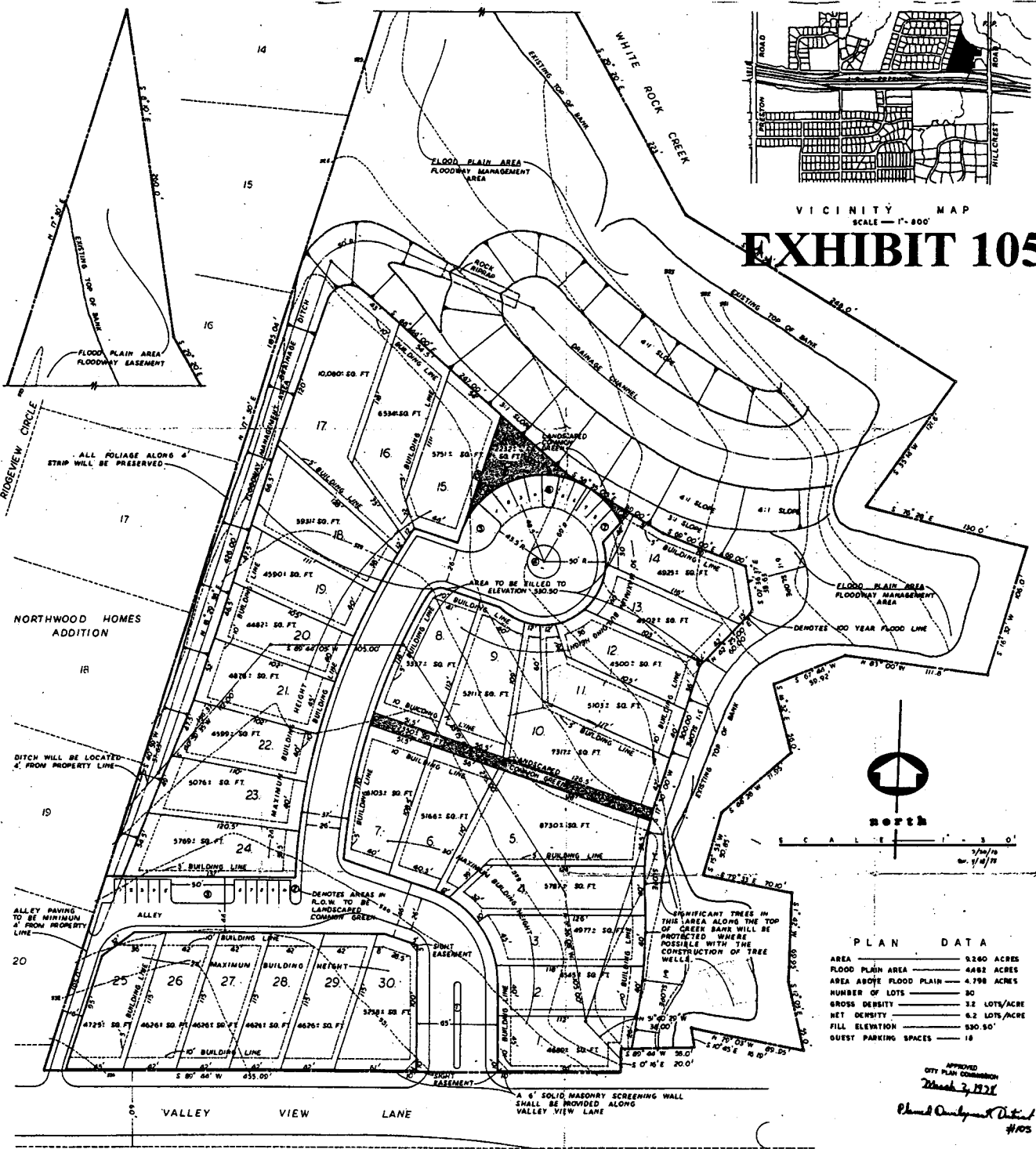


25423



VICINITY MAP
SCALE - 1" = 800'

EXHIBIT 105A



SCALE - 1" = 30'

PLAN DATA

AREA	9.260 ACRES
FLOOD PLAIN AREA	4.482 ACRES
AREA ABOVE FLOOD PLAIN	4.778 ACRES
NUMBER OF LOTS	20
GROSS DENSITY	2.2 LOTS/ACRE
NET DENSITY	6.2 LOTS/ACRE
FILL ELEVATION	330.50'
GUEST PARKING SPACES	18

APPROVED
CITY PLAN COMMISSION
March 7, 1952
Charles Development District #105

H-N-R CORPORATION
4747 L. B. J. FREEWAY
DALLAS, TEXAS
9.260 ACRES
BLOCK 7429

PROPOSED ZONING PLAN AND PRELIMINARY PLAT FOR:
A PLANNED DEVELOPMENT
DALLAS, TEXAS.

781642
APPROVED BY
CITY COUNCIL
JUN 24 1952
H. H. H.

DON FRIES AND ASSOCIATES
CITY • SITE • LAND PLANNERS
4015 TEXAS STREET, SUITE 200
DALLAS, TEXAS 75205