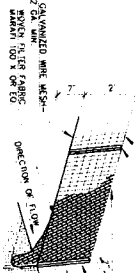
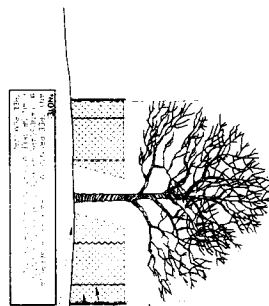


27218

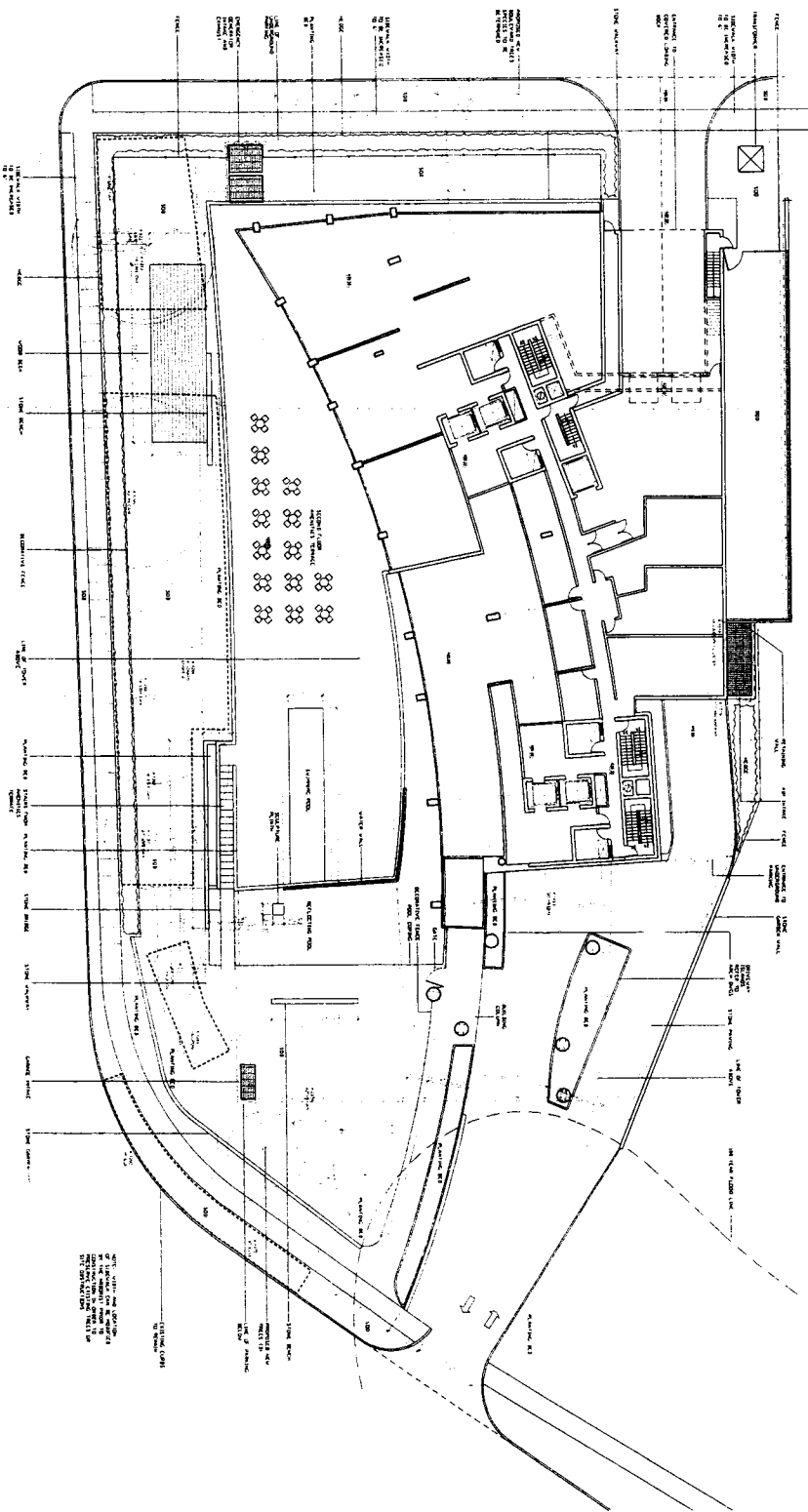
NO.	ELEV.	TREE TYPE & SIZE	CANOPY WIDTH	PRIVATE/PUBLIC	STATUS
1210	420.58	18" OAK	46'	PRIVATE	PROTECT
1211	420.84	18" OAK	42'	PRIVATE	PROTECT
1212	421.10	18" OAK	42'	PRIVATE	PROTECT
1265	418.75	42" PECAN	50'	PRIVATE	PROTECT
1266	418.99	6" CHAPE WYRTLE	38'	PRIVATE	REMOVE
1285	418.05	34" OAK	50'	PRIVATE	PROTECT
1286	418.11	28" OAK	42'	PRIVATE	PROTECT
1287	418.05	28" OAK	42'	PRIVATE	PROTECT
1288	418.78	VAUPRON	15'	PRIVATE	PROTECT
1289	419.03	VAUPRON	15'	PRIVATE	PROTECT
1290	417.04	34" ELM	43'	PRIVATE	PROTECT
1314	418.98	42" PECAN	42'	PUBLIC	REMOVE
1375	418.75	30" PECAN	32'	PUBLIC	PROTECT
1489	427.08	30" PECAN	58'	PRIVATE	REMOVE
1518	427.08	WALBERRY CLUSTER	22'	PRIVATE	REMOVE
1519	423.15	10" HACKBERRY	24'	PRIVATE	REMOVE



CONDUCTED WIND TUNNEL TESTS AT THE UNIVERSITY OF TEXAS AT ARLINGTON. THE TESTS WERE CONDUCTED IN A WIND TUNNEL WITH A TEST SECTION 10' X 10' X 5' OF SQUARE. THE RESULTS OF THE TESTS ARE AS FOLLOWS: THE WIND TUNNEL TESTS WERE CONDUCTED AT A WIND SPEED OF 10 MPH. THE RESULTS OF THE TESTS ARE AS FOLLOWS: THE WIND TUNNEL TESTS WERE CONDUCTED AT A WIND SPEED OF 10 MPH. THE RESULTS OF THE TESTS ARE AS FOLLOWS: THE WIND TUNNEL TESTS WERE CONDUCTED AT A WIND SPEED OF 10 MPH.



NO TREE TO BE REMOVED. THE TREE IS A 10' X 10' X 5' OF SQUARE. THE RESULTS OF THE TESTS ARE AS FOLLOWS: THE WIND TUNNEL TESTS WERE CONDUCTED AT A WIND SPEED OF 10 MPH. THE RESULTS OF THE TESTS ARE AS FOLLOWS: THE WIND TUNNEL TESTS WERE CONDUCTED AT A WIND SPEED OF 10 MPH.



Planned Development
Subdistrict No. 82

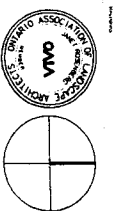
Planned Development
District No. 193

NOT FOR CONSTRUCTION

LANDSCAPE PLAN

2505 TURTLE CREEK BLVD.

02



LANDSCAPE ARCHITECT

02

LANDSCAPE PLAN

2505 TURTLE CREEK BLVD.

02