

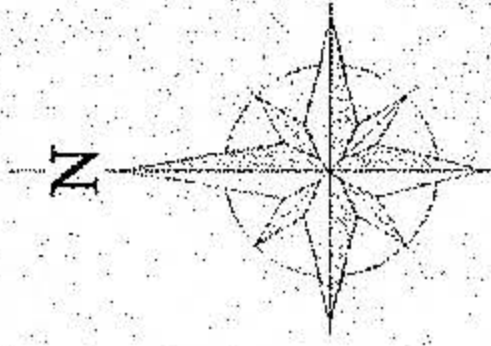
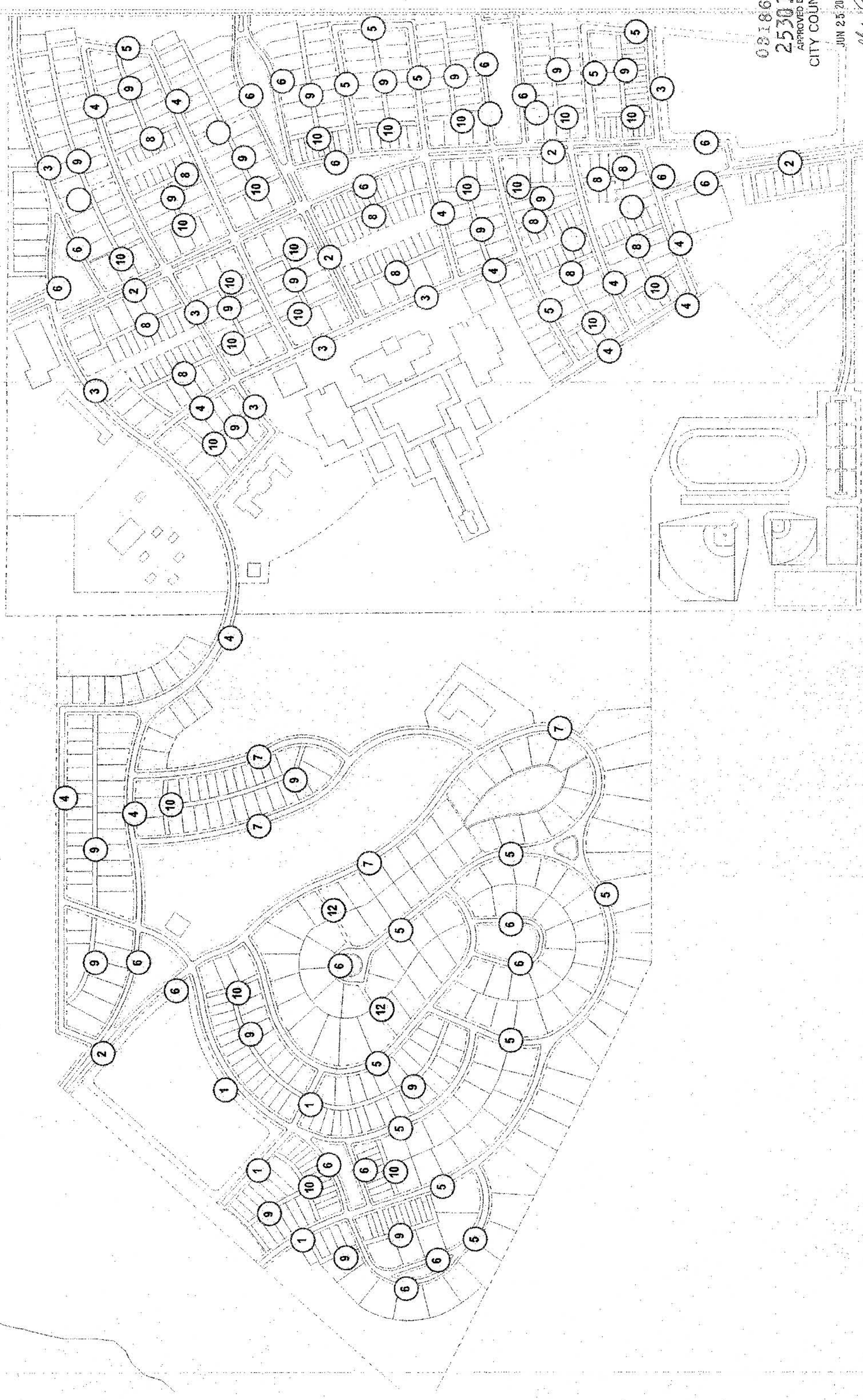
EXHIBIT 655C

Z - 012 - 291 (RB)

DALLAS, TEXAS

EXISTING THOROUGHFARES

- 1 MS-60-34
- 2 MS-72-38
- 3 ST-54-30
- 4 ST-50-26
- 5 RD-47-23
- 6 DR-36-19
- 7 DR-42-23
- 8 AL-20-20
- 9 LA-15-12
- 10 LA-20-15
- PT-40-06
- FS-16-06



© 2002 Duery Plans-Zyork & Company
Revision Date: 11-04-02: 0222-Code.hncd

021866
25301
APPROVED BY
CITY COUNCIL
JUN 23 2003
Approved
City Secretary
5-22-03
PLANNED DEVELOPMENT DISTRICT NO. 655

CODE B

INTERIOR STREET ASSIGNMENT MAP 10

Zoning File 2012-291 (RB)