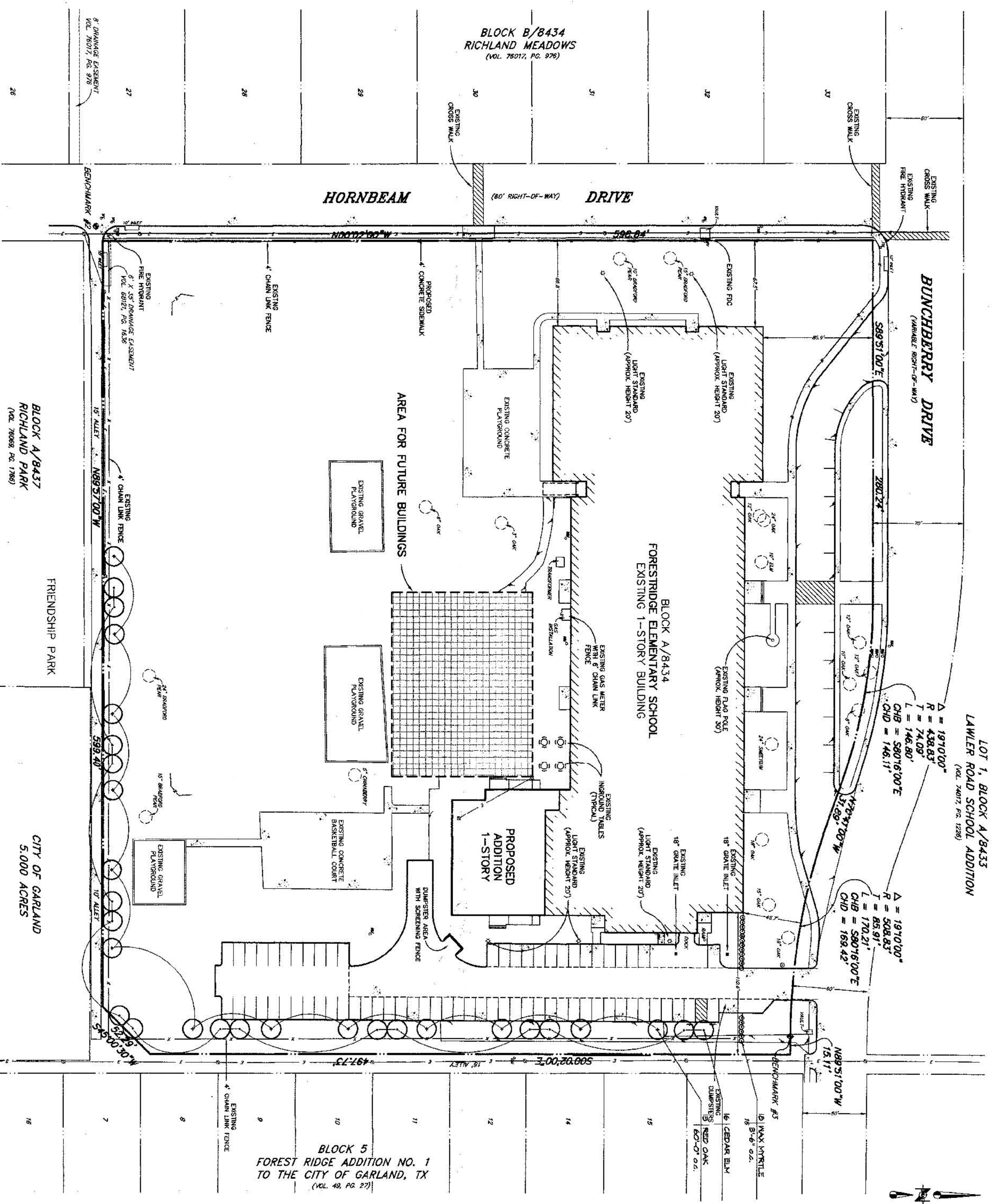


EXHIBIT 520A

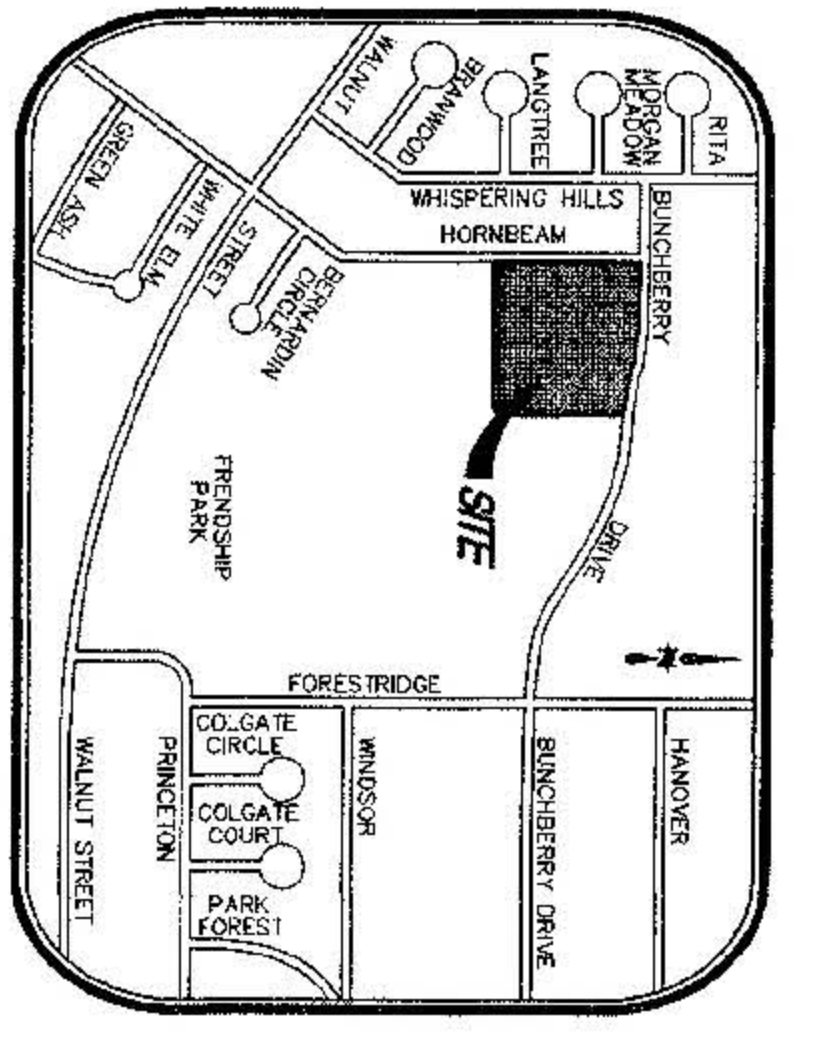


LOT 1, BLOCK A/8433
LAWLER ROAD SCHOOL ADDITION
(VOL. 24017, PG. 1238)

BLOCK A/8434
FORESTRIDGE ELEMENTARY SCHOOL
EXISTING 1-STORY BUILDING

PROPOSED
ADDITION
1-STORY

BLOCK 5
FOREST RIDGE ADDITION NO. 1
TO THE CITY OF GARLAND, TX
(VOL. 49, PG. 27)



TOTAL SITE DATA SUMMARY

PROPOSED USE:	PUBLIC SCHOOL
TOTAL LOT AREA:	368,102 SQUARE FEET
TOTAL BUILDING SQ. FT.:	
EXISTING:	51,000 SQUARE FEET
ADDITION:	7,500 SQUARE FEET
FUTURE:	6,750 SQUARE FEET
TOTAL:	65,250 SQUARE FEET
BUILDING HEIGHTS:	ONE STORY = 30'-0"
TOTAL LOT COVERAGE:	62,250 SQ. FT. BUILDING FOOTPRINT 18%
TOTAL PARKING REQUIRED:	74 SPACES
TOTAL PARKING PROVIDED:	80 SPACES
FLOOR AREA RATIO:	0.18
LANDSCAPING:	SEE LANDSCAPING PLAN

LEGEND

- ☆ LIGHT POLE (MAX HEIGHT 25')
- FUTURE BUILDING AREA
- LARGE TREE - 3" CALIPER, MIN. HEIGHT 6' FROM APPROVED LIST SEC. 51A-10-13A(D)
- YAUPON HOLLY TREE
- EXISTING TREE
- SHRUBS: DWARF BURFORD HOLLY, DWARF YAUPON HOLLY

9829662
23682
APPROVED BY
CITY COUNCIL
OCT 14 1998
DHR Secretary

PLANT LIST

QTY.	COMMON NAME	SCIENTIFIC NAME	SIZE / COMMENTS
TREES			
16	CEDEAR ELM	<i>Ulmus crinitifolia</i>	3" cal., 10-12' H., 5 1/2"-6" sp., med. full, BB8
13	RED OAK	<i>Quercus shumardii</i>	3" cal., 12-14' H., 6"-8" sp., med. full, BB8
SHRUBS			
18	WAX MYRTLE	<i>Myrica caroliniana</i>	5 gal., 30"-36" H., 10"-20" sp., full

DEVELOPMENT/LANDSCAPE PLAN
FORESTRIDGE ELEMENTARY SCHOOL
RICHARDSON INDEPENDENT SCHOOL DISTRICT
10330 BUNCHBERRY DRIVE
CITY OF DALLAS, DALLAS COUNTY, TEXAS

ARCHITECT:
HUBBELL ASSOCIATES ARCHITECTS
12770 CANT ROAD, SUITE 207
DALLAS, TEXAS 75244
(214) 855-0189

ENGINEER:
RICHARDSON INDEPENDENT SCHOOL DISTRICT
6449 LA SERRA, SUITE 300
RICHARDSON, TX 75081
(972) 301-3577

APPROVED
City Plan Commission
9-17-98
PLANNED DEVELOPMENT DISTRICT NO. 520
2978-326 / 11668-NE (13)

DATE: AUGUST 27, 1998

