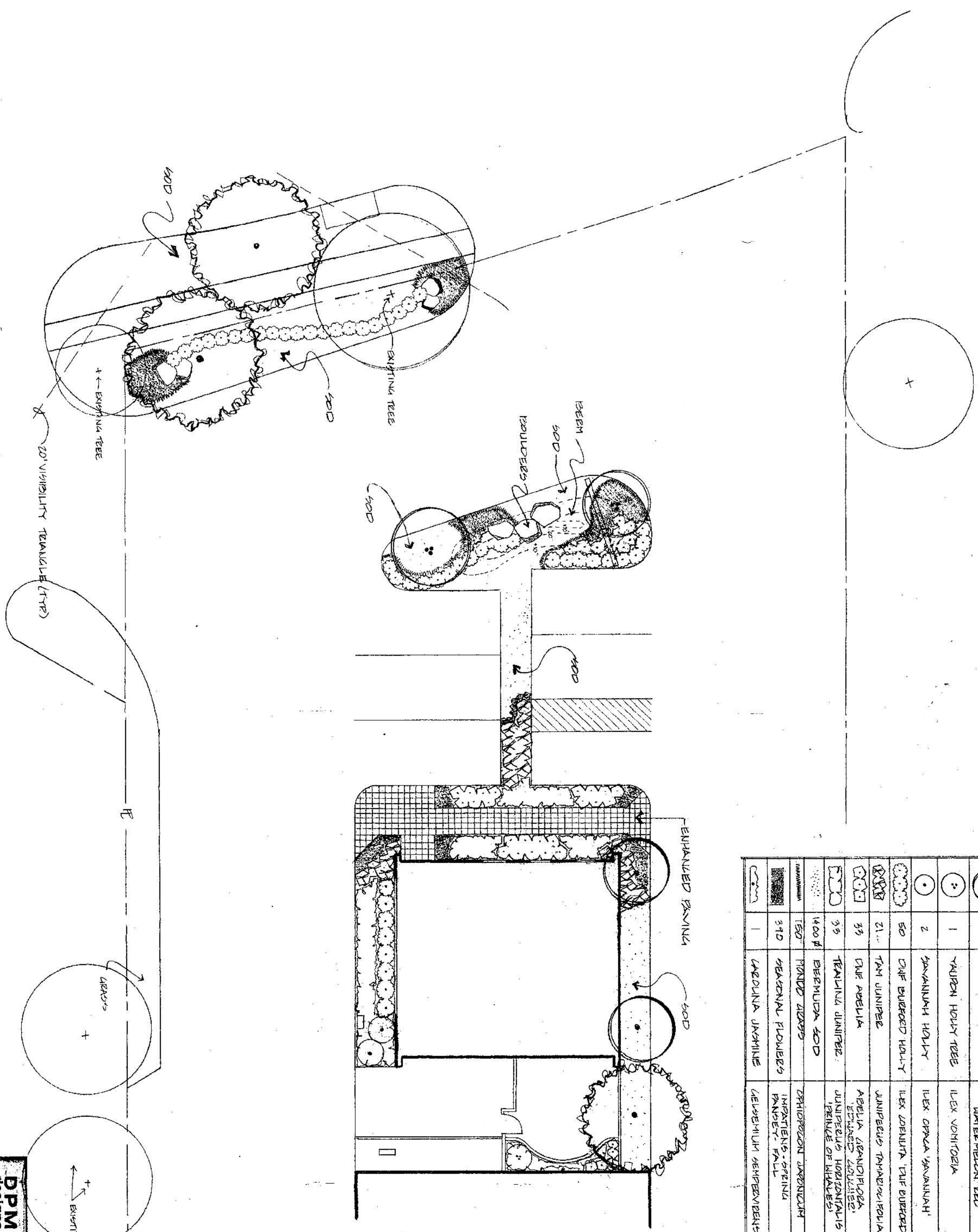


# EXHIBIT S-12B

## 2 OF 2



SYM.	QTY.	COMMON NAME	BOTANICAL NAME	SPECIFICATIONS
	3	RED OAKS	QUERCUS shumardi	4" CAL., 14" HT., 10" SP
	2	BLANDFORD PEAR	Pyrus calleryana 'blandford'	4" CAL., 18" HT., 6" SP
	2	LEAFY HYDRANGEA	Hydrangea lindleyana 'watermelon red'	6" HT., 6" SP, MULTI-TRUNKED
	1	YUCCA HOLLY TREE	Ilex vomitoria	4" HT., 3" SP, MULTI-TRUNKED
	2	SPREADING HOLLY	Ilex opaca 'spreading'	6" HT., 3" SP
	50	DWARF BURFORD HOLLY	Ilex opaca 'dwarf burford'	3" CAL., 24" HT., 18" SP
	21	TAM JUNIPER	Juniperus horizontalis 'tam'	3" CAL., 15" HT., 18" SP
	33	ONE APPLE	Malus domestica 'one apple'	3" CAL., 15" HT., 15" SP
	33	TEAL JUNIPER	Juniperus horizontalis 'teal'	1" CAL., 12" SP, FULL
	1400 #	BERNUDA SOD		SOD
	150	PAVED AREAS		4" PAV. 3" SL.
	310	HEXAGONAL FLOWERS		4" PAV., 6" DL.
	1	CAROLINA JASMINE	Yucca filifera 'carolina'	5" CAL., STRAIPED

**\* NOTE:**  
 \* ALL PLANTED & GRASS AREAS TO BE ON AUTOMATIC IRRIGATION SYSTEM

**DPM designs**  
 LANDSCAPE ARCHITECTURE  
 2800 Lakeshore Blvd., Suite 211  
 Dallas, TX 75229  
 972.251.9044

INWOOD/LEMON SELF STORAGE  
 INWOOD ROAD  
 # 00248  
 DATE: 12/01/95  
 DRAWN BY: EPH  
 CHECKED BY: EPH  
 2900 N. STEVENSONS, DALLAS, TX. 214-481-9450  
 DETAIL PLAN/NO. LA-2

PLANNED DEVELOPMENT DISTRICT NO. 122  
 2356-107/4420-N  
 PLANNED DEVELOPMENT DISTRICT NO. 12  
 2356-107

APPROVED BY  
 960251  
 22645  
 CITY COUNCIL  
 JAN 10 1996  
 City Secretary  
 City Plan Commission  
 11-30-95